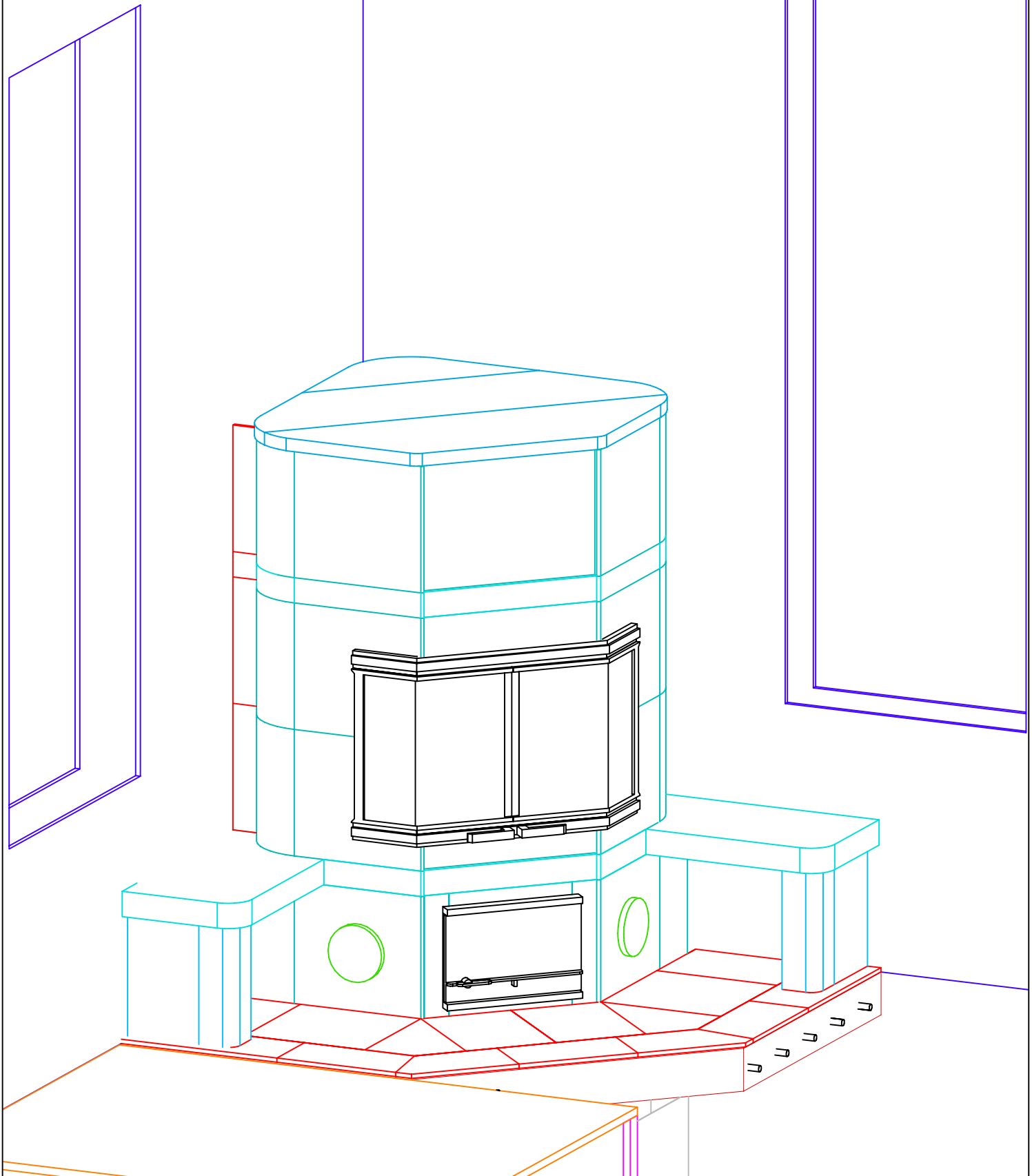



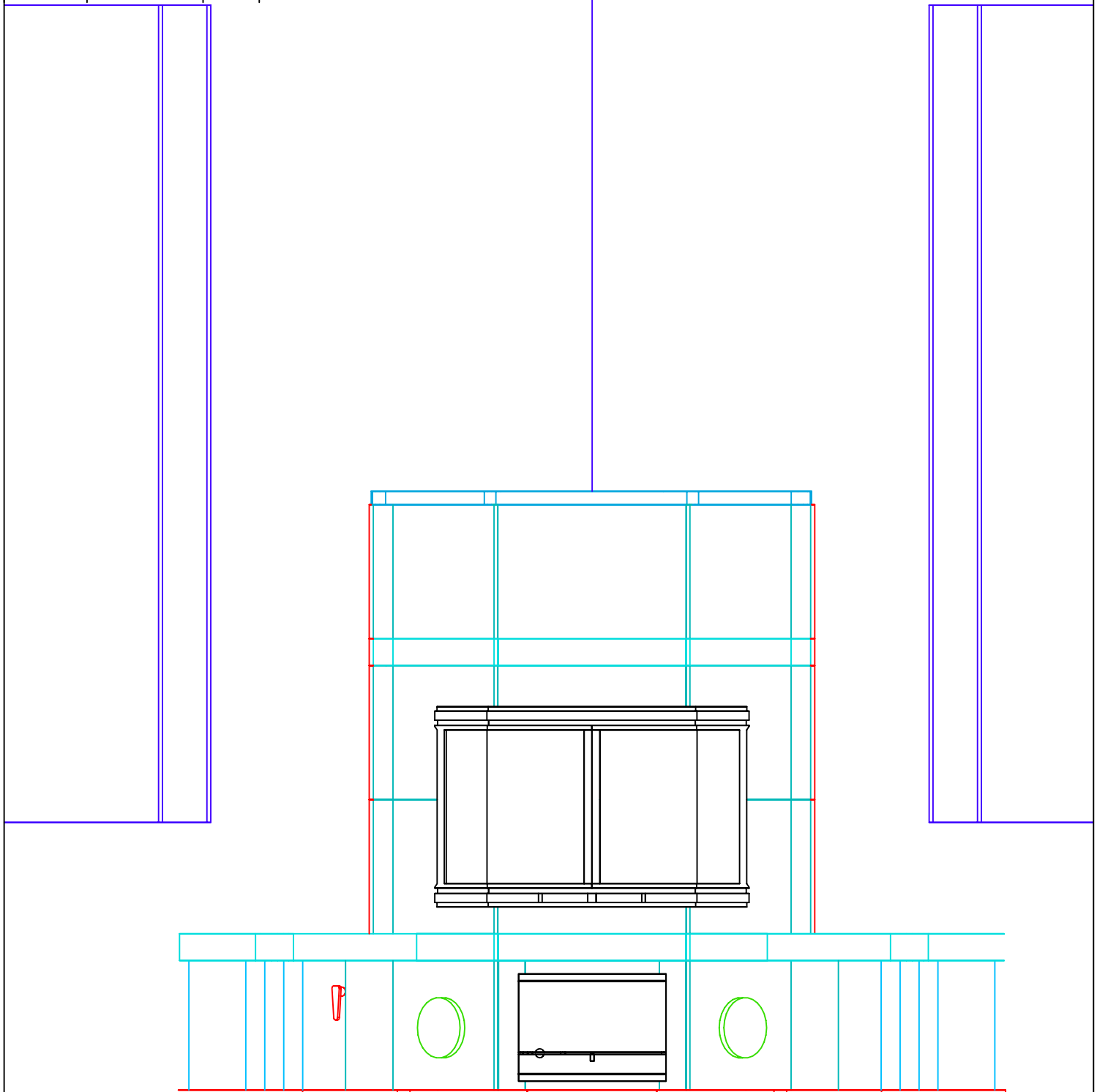
Revision: 1	Date: 3/13/02	By: DP
Revision: 2	Date: 3/27/02	By: DP
Revision: 3	Date: 7/24/02	By: DP

INFORMATION ONLY



TULIKIVI 	MID-ATLANTIC MASONRY HEAT McIntire Business Park Charlottesville, VA 22903 (434)979-9707 Fax 434-979-6416	PROJECT	WETHERHORN	CONTRACT	VIEW	ISOMETRIC	PAGE 1
		MODEL	KTU1330	DRAWN BY	D.POWLEY	DATE	

Revision: 1	Date: 3/13/02	By: DP
Revision: 2	Date: 3/27/02	By: DP
Revision: 3	Date: 7/24/02	By: DP



INFORMATION ONLY



MID-ATLANTIC MASONRY HEAT
 McIntire Business Park
 Charlottesville, VA 22903
 (434)979-9707 Fax 434-979-6416

PROJECT
 WETHERHORN
 MODEL
 KTU1330

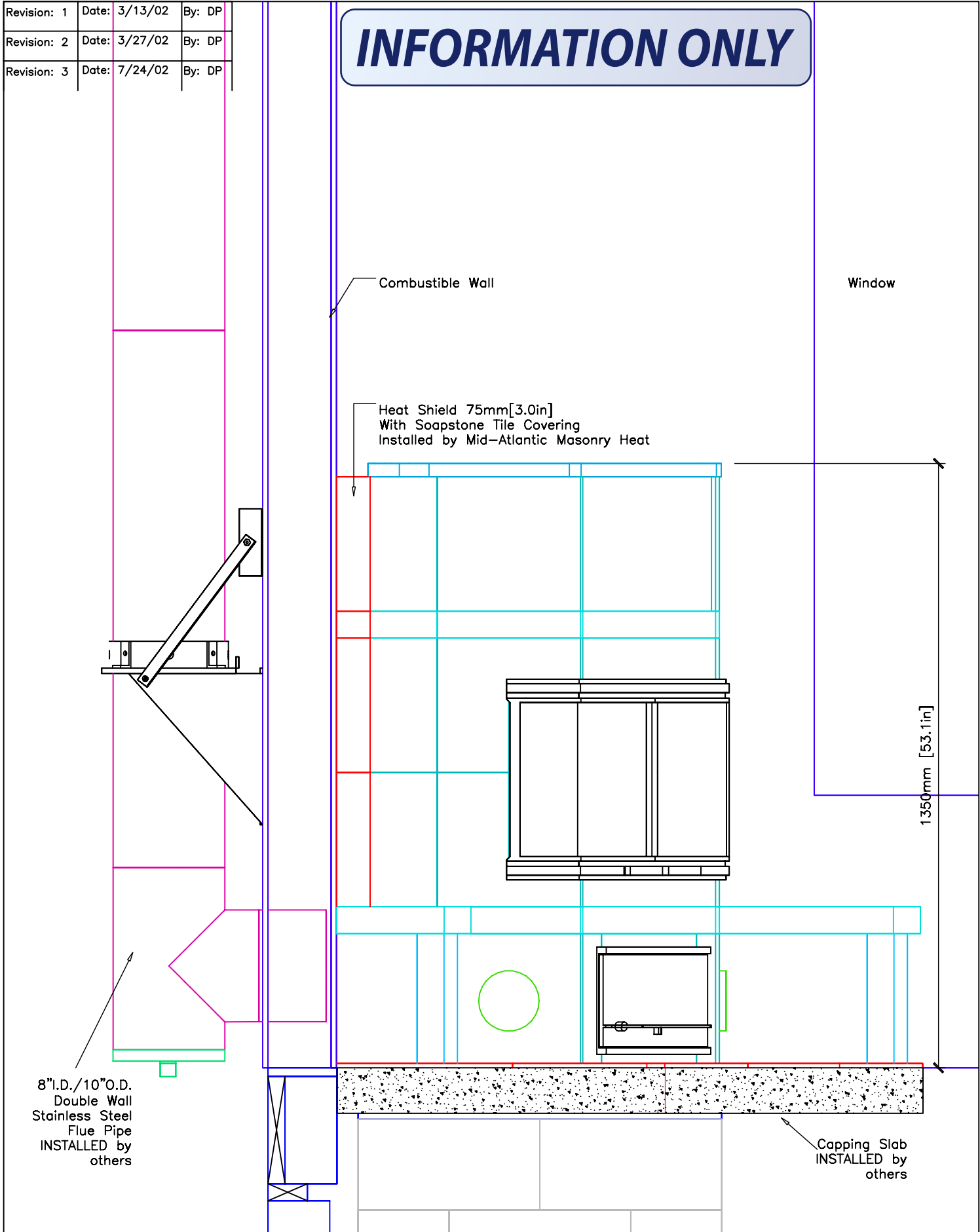
CONTRACT
 DRAWN BY
 D.POWLEY

VIEW
 FRONT
 DATE
 3/05/02

PAGE
 2

Revision: 1	Date: 3/13/02	By: DP
Revision: 2	Date: 3/27/02	By: DP
Revision: 3	Date: 7/24/02	By: DP

INFORMATION ONLY



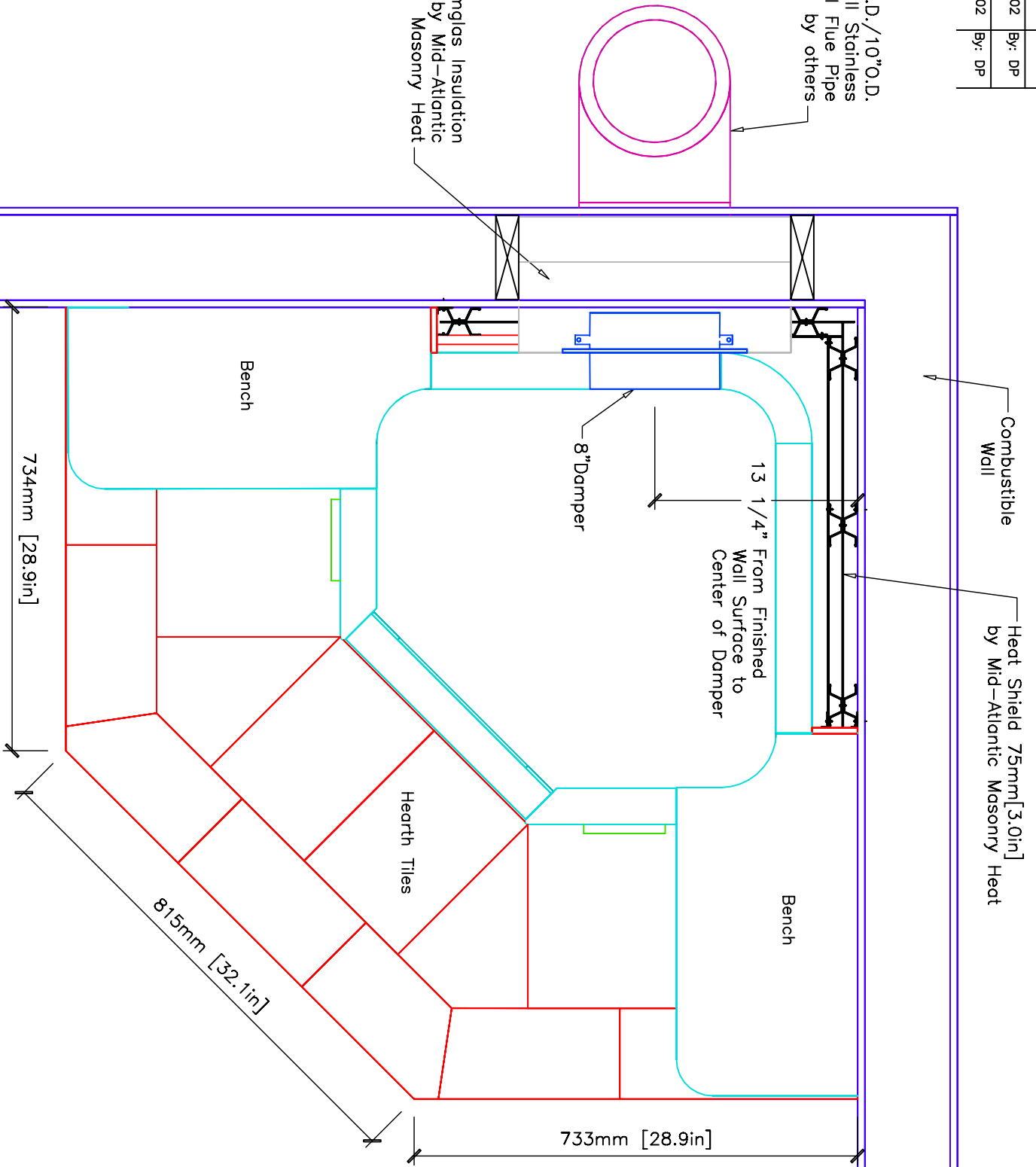
Revision: 1	Date: 3/13/02	By: DP
Revision: 2	Date: 3/27/02	By: DP
Revision: 3	Date: 7/24/02	By: DP

INFORMATION ONLY

NOTE: HEARTH TILES INSTALLED BY OTHERS

8" I.D./10" O.D.
Double Wall Stainless
Steel Flue Pipe
INSTALLED by others

Foamglas Insulation
by Mid-Atlantic
Masonry Heat



Combustible
Wall

Heat Shield 75mm [3.0in]
by Mid-Atlantic Masonry Heat

13 1/4" From Finished
Wall Surface to
Center of Damper

8" Damper

Bench

Hearth Tiles

Bench

734mm [28.9in]

815mm [32.1in]

733mm [28.9in]



MID-ATLANTIC MASONRY HEAT
McIntire Business Park
Charlottesville, VA 22903
(434)979-9707 Fax 434-979-6416

PROJECT
WETHERHORN
MODEL
KTU1330

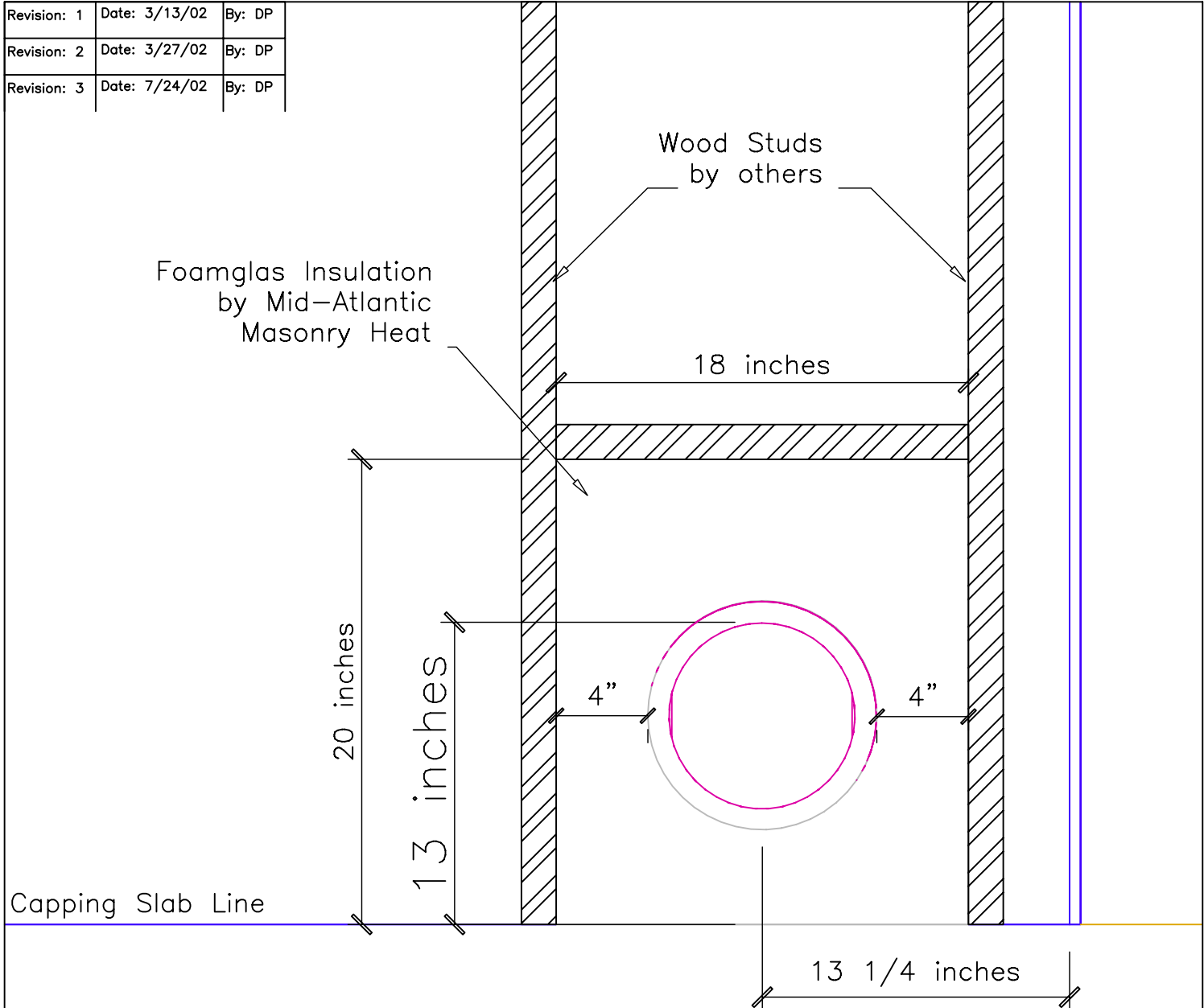
CONTRACT
DRAWN BY
D.POWLEY

VIEW
PLAN
DATE
3/05/02

PAGE

4

Revision: 1	Date: 3/13/02	By: DP
Revision: 2	Date: 3/27/02	By: DP
Revision: 3	Date: 7/24/02	By: DP



*CRITICAL DIMENSION:
13" from Sub Floor
to TOP INSIDE Flue Pipe

**CRITICAL DIMENSION:
13 1/4" from Finished Wall Surface
to center of 8" I.D./10" O.D. Double Wall
Stainless Steel Flue Pipe

INFORMATION ONLY

WALL OPENING:

Sheetrock around 18"X20" Opening Must be in place prior to installation
UL Listed—MINIMUM 4" Foamglas Insulation around Flue Pipe

Chimney Placement:

*CRITICAL DIMENSION—13" from Sub Floor to TOP INSIDE Flue Pipe
**CRITICAL DIMENSION—13 1/4" from Finished Wall Surface to Center of Flue Pipe
Chimney— 8" I.D./10" O.D. Double Wall Stainless Steel Flue Pipe—INSTALLED by others



MID-ATLANTIC MASONRY HEAT
McIntire Business Park
Charlottesville, VA 22903
(434)979-9707 Fax 434-979-6416

PROJECT WETHERHORN
MODEL KTU1330

CONTRACT
DRAWN BY D.POWLEY

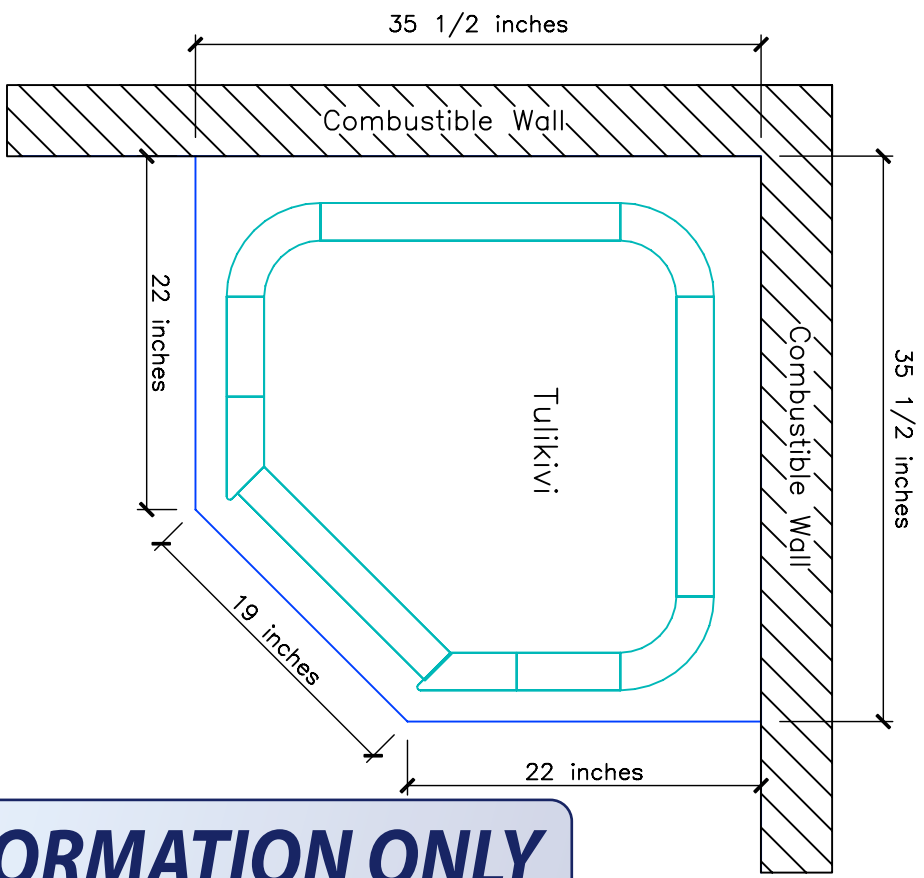
VIEW Wall Elevation
DATE 3/05/02

PAGE 5

Revision: 2	Date: 3/27/02	By: DP
Revision: 3	Date: 7/24/02	By: DP

CAPPING SLAB

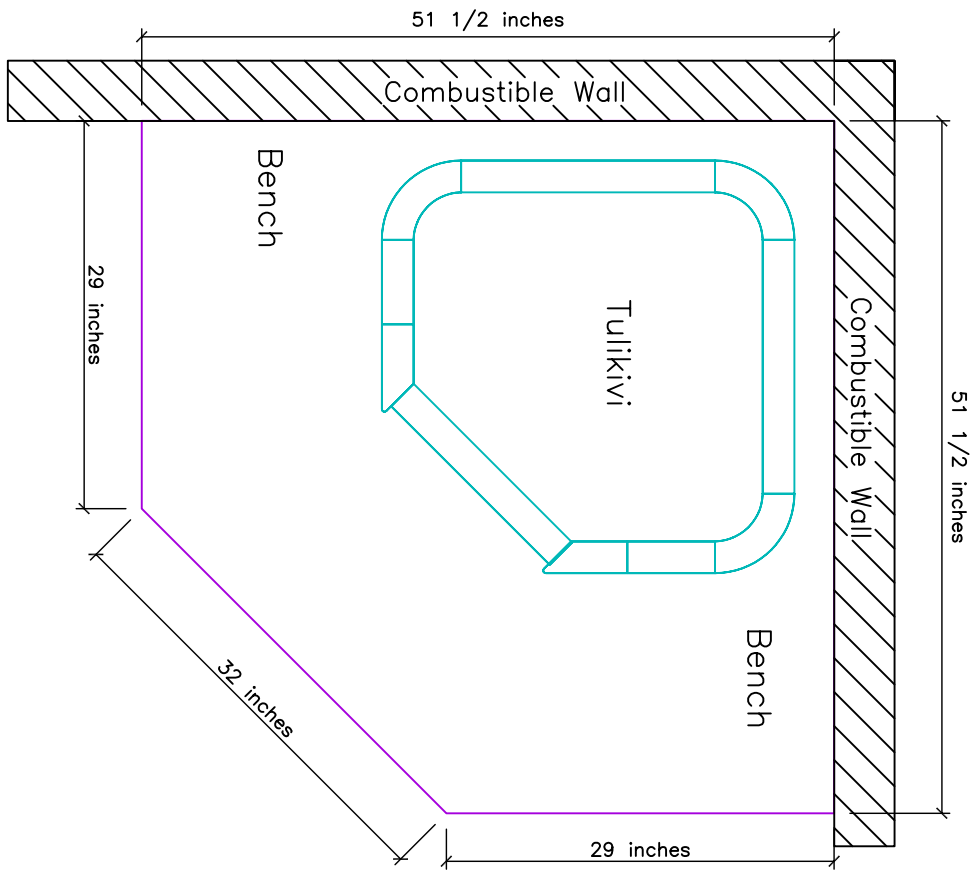
Minimum Dimensions—2" from Base of Unit
35.5" x 22" x 19"



INFORMATION ONLY

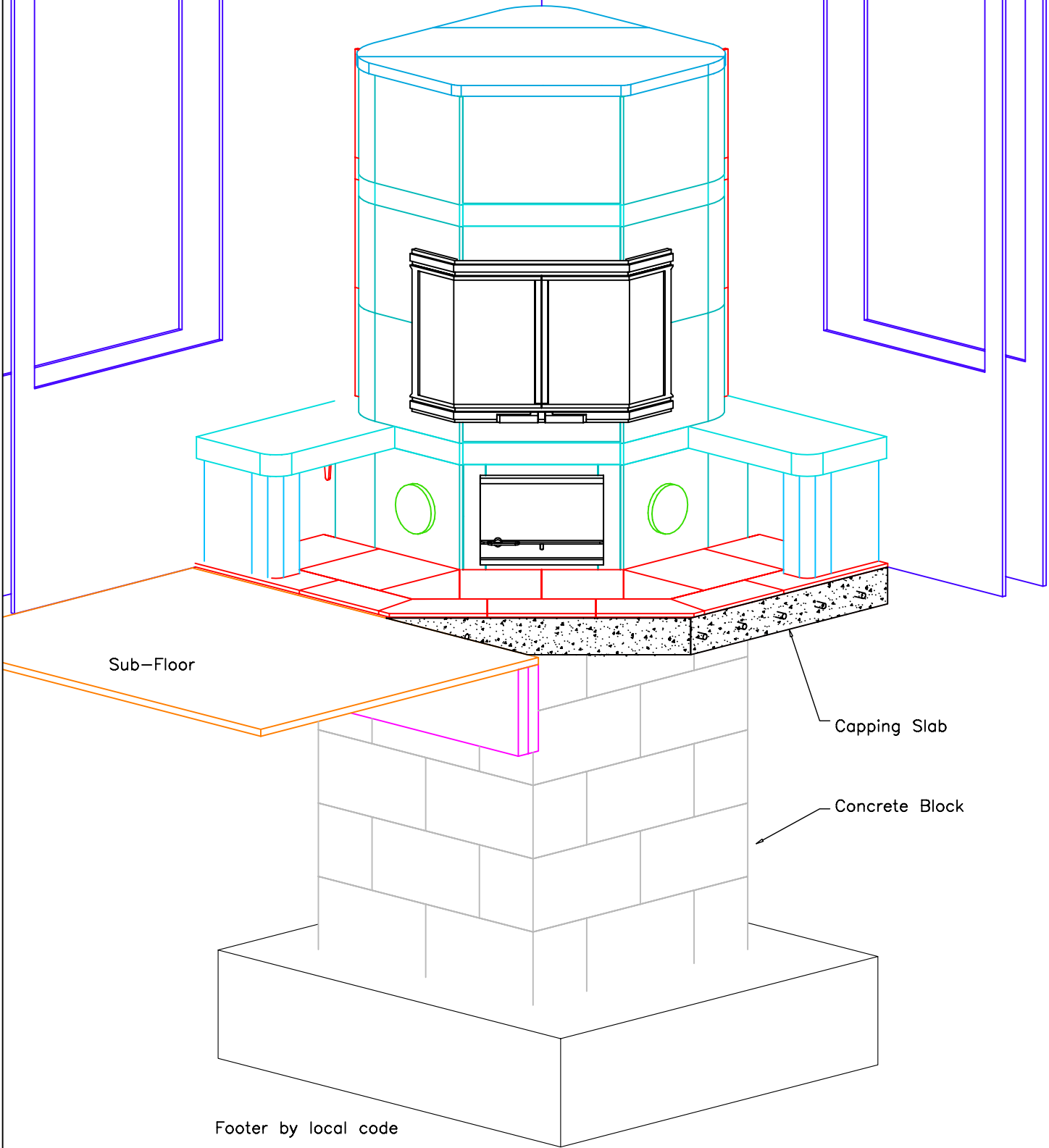
NOTE:
TOP OF CAPPING SLAB TO BE LEVEL AND FLUSH WITH SUB-FLOOR
Tolerances: +/- 1/8" No additional cost to adjust slab
+/- 1/4" \$150.00—\$200.00 additional cost to adjust slab
+/- 1/2" \$500.00 additional cost to adjust slab

Recommended Dimension—Entire Hearth Area
51.5" x 29" x 32"

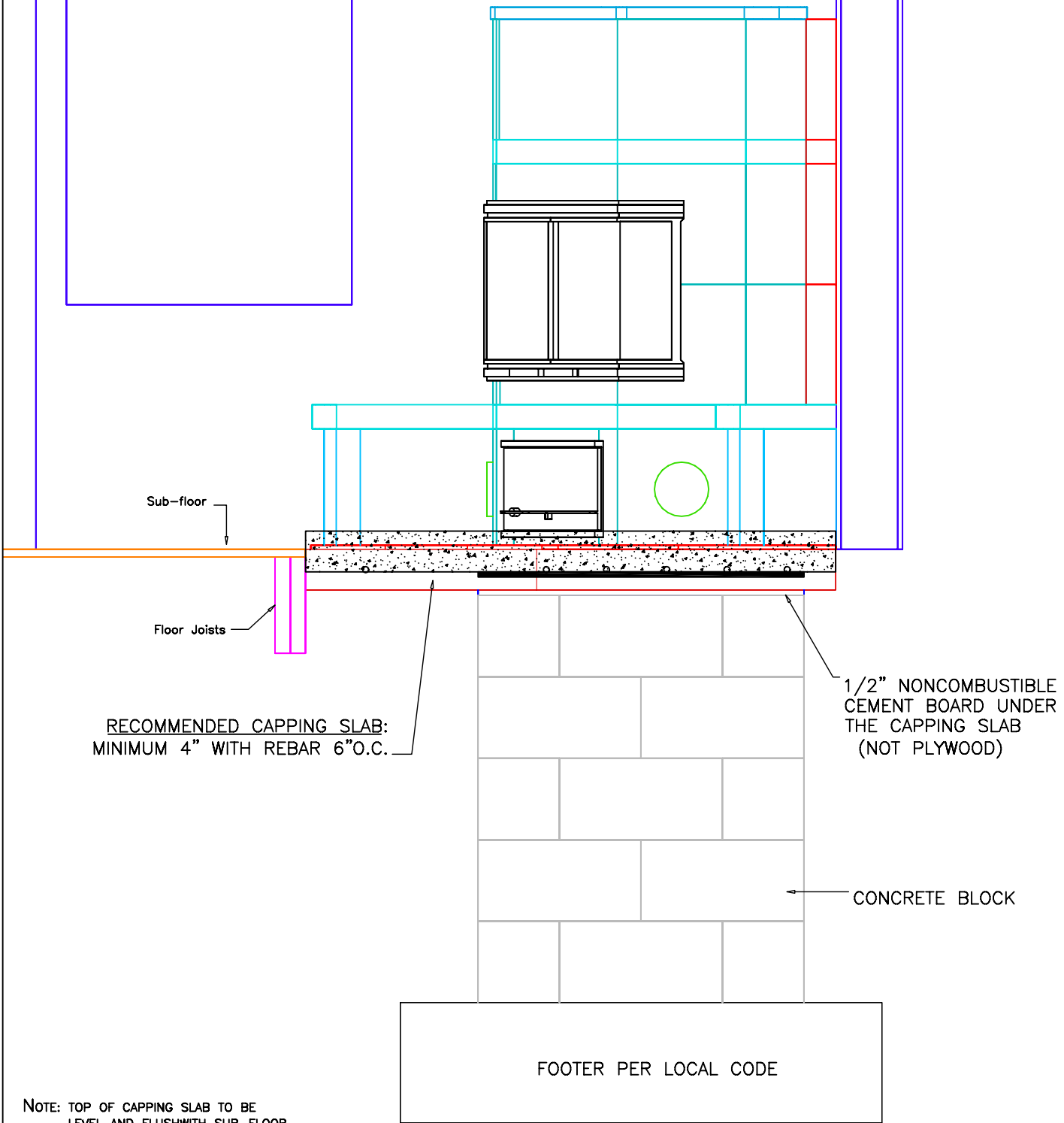


UNIT WEIGHT: Approx. 3000lbs.
Contractor is responsible for engineering capping slab to support weight of fireplace

INFORMATION ONLY



INFORMATION ONLY



RECOMMENDED CAPPING SLAB:
MINIMUM 4" WITH REBAR 6"O.C.

1/2" NONCOMBUSTIBLE
CEMENT BOARD UNDER
THE CAPPING SLAB
(NOT PLYWOOD)

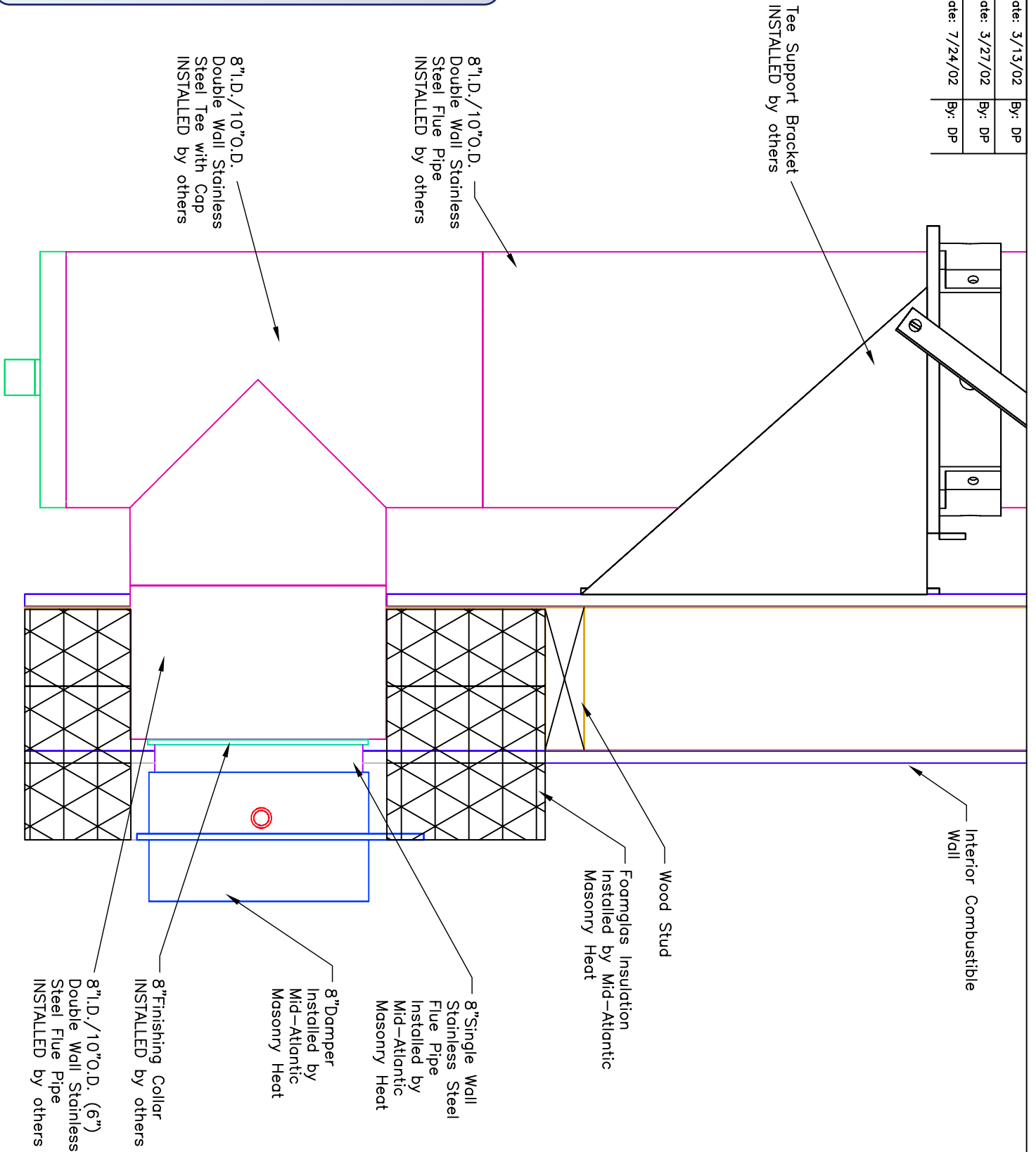
CONCRETE BLOCK

FOOTER PER LOCAL CODE

NOTE: TOP OF CAPPING SLAB TO BE
LEVEL AND FLUSH WITH SUB-FLOOR
Tolerances: +/- 1/8" No additional cost to adjust slab
+/- 1/4" \$150.00-\$200.00 additional cost to adjust slab
+/- 1/2" \$500.00 additional cost to adjust slab

INFORMATION ONLY

Revision: 1	Date: 3/13/02	By: DP
Revision: 2	Date: 3/27/02	By: DP
Revision: 3	Date: 7/24/02	By: DP

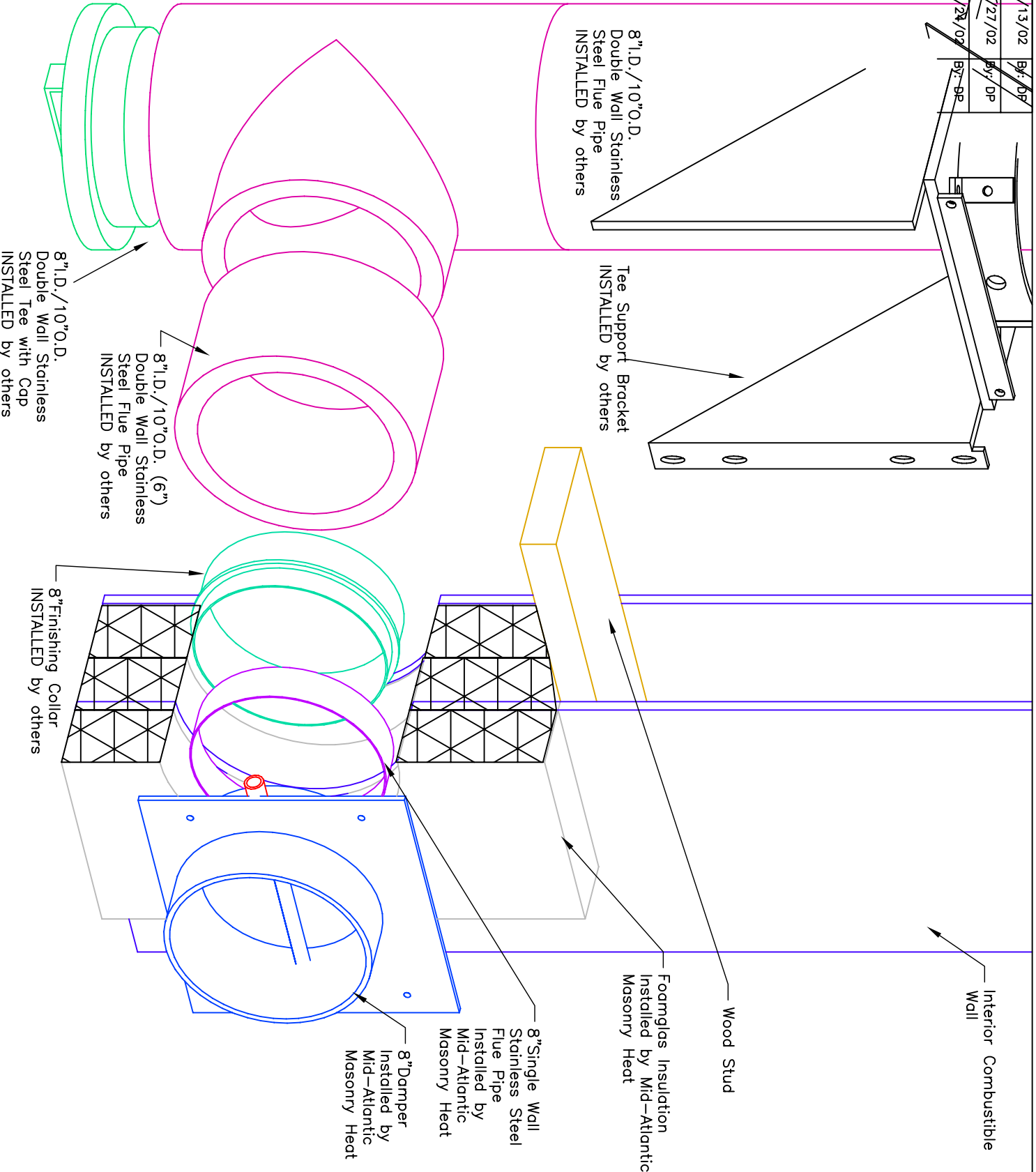


MID-ATLANTIC MASONRY HEAT
 McIntire Business Park
 Charlottesville, VA 22903
 (434)979-9707 Fax 434-979-6416

PROJECT	WETHERHORN	CONTRACT	VIEW	Chimney Connection
MODEL	KTU1330	DRAWN BY	DATE	
		D.POWLEY	3/28/02	

INFORMATION ONLY

Revision: 1	Date: 3/13/02	By: DP
Revision: 2	Date: 5/27/02	By: DP
Revision: 3	Date: 7/24/02	By: DP



MID-ATLANTIC MASONRY HEAT
 McIntire Business Park
 Charlottesville, VA 22903
 (434)979-9707 Fax 434-979-6416

PROJECT	WETHERHORN	CONTRACT	VIEW	Chimney Connection
MODEL	KTU1330	DRAWN BY	DATE	
		D.POWLEY	3/28/02	