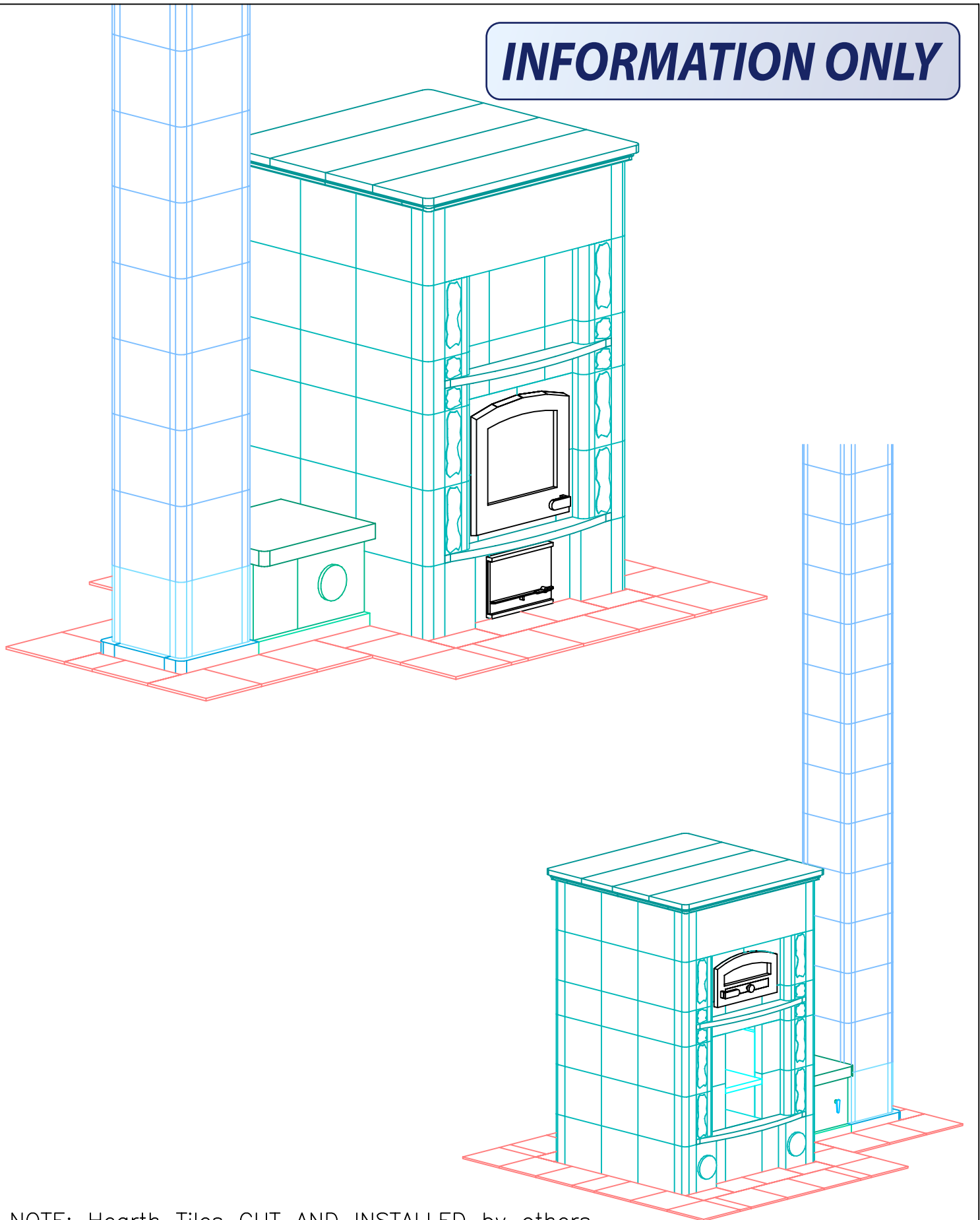


INFORMATION ONLY



NOTE: Hearth Tiles CUT AND INSTALLED by others



MID-ATLANTIC MASONRY HEAT
 1229 Harris Street Suite 1
 Charlottesville, VA 22903
 (434)979-9709 Fax 434-979-6416

PROJECT WEESE
 MODEL TLU3150

CONTRACT 5625
 DRAWN BY D.P.BYRAM

VIEW PERSPECTIVE
 DATE 2/12/04

PAGE 1

FIREPLACE VIEW

INFORMATION ONLY

← Soapstone Chimney Chase by Mid-Atlantic

↙ Heated Bench

1770mm [69.7in]

600mm [23.6in]

1080mm [42.5in]

420mm [16.5in]



MID-ATLANTIC MASONRY HEAT
1229 Harris Street Suite 1
Charlottesville, VA 22903
(434)979-9709 Fax 434-979-6416

PROJECT WEESE
MODEL TLU3150

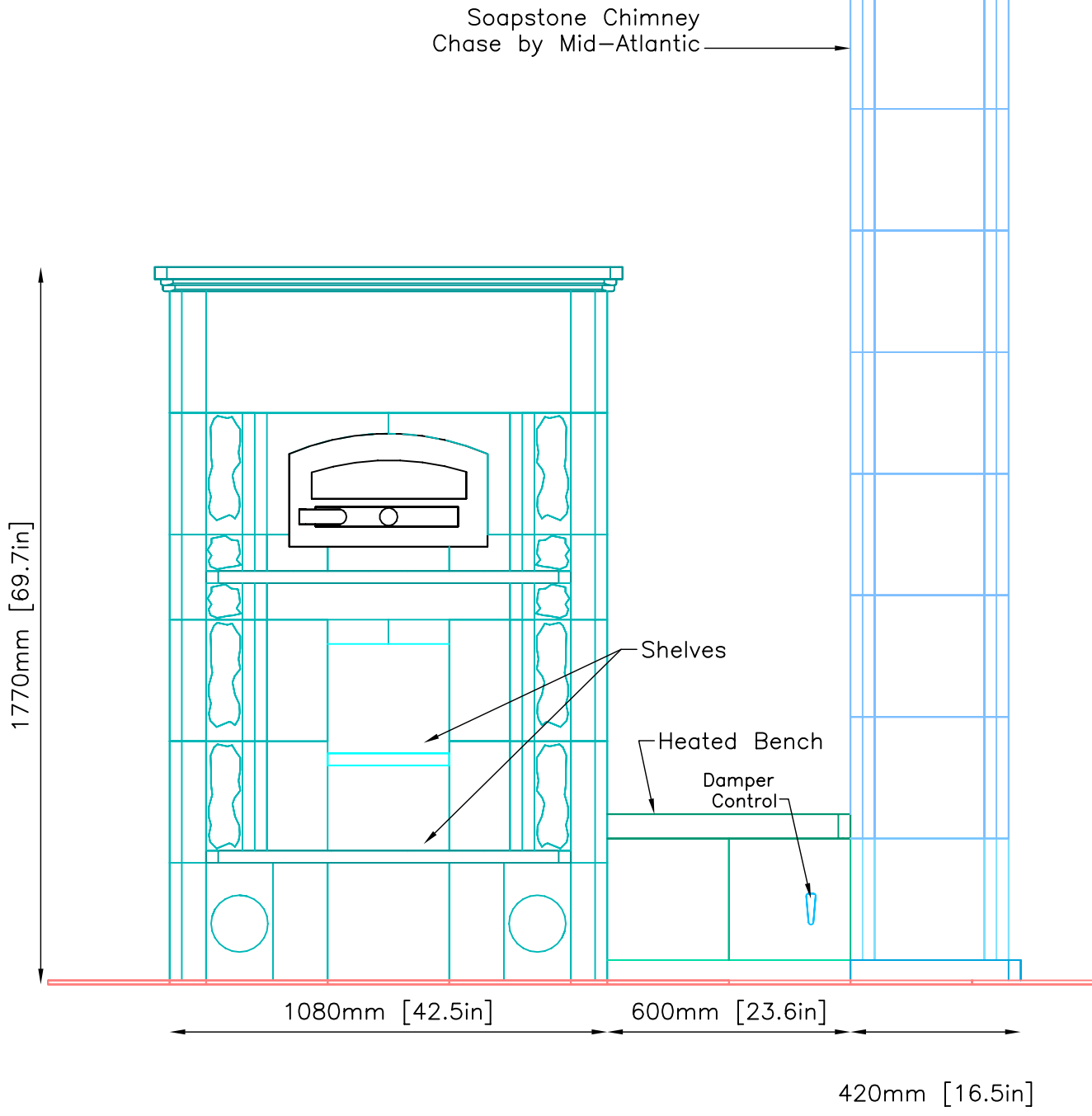
CONTRACT 5625
DRAWN BY D.P.BYRAM

VIEW FIREPLACE
DATE 2/12/04

PAGE

2

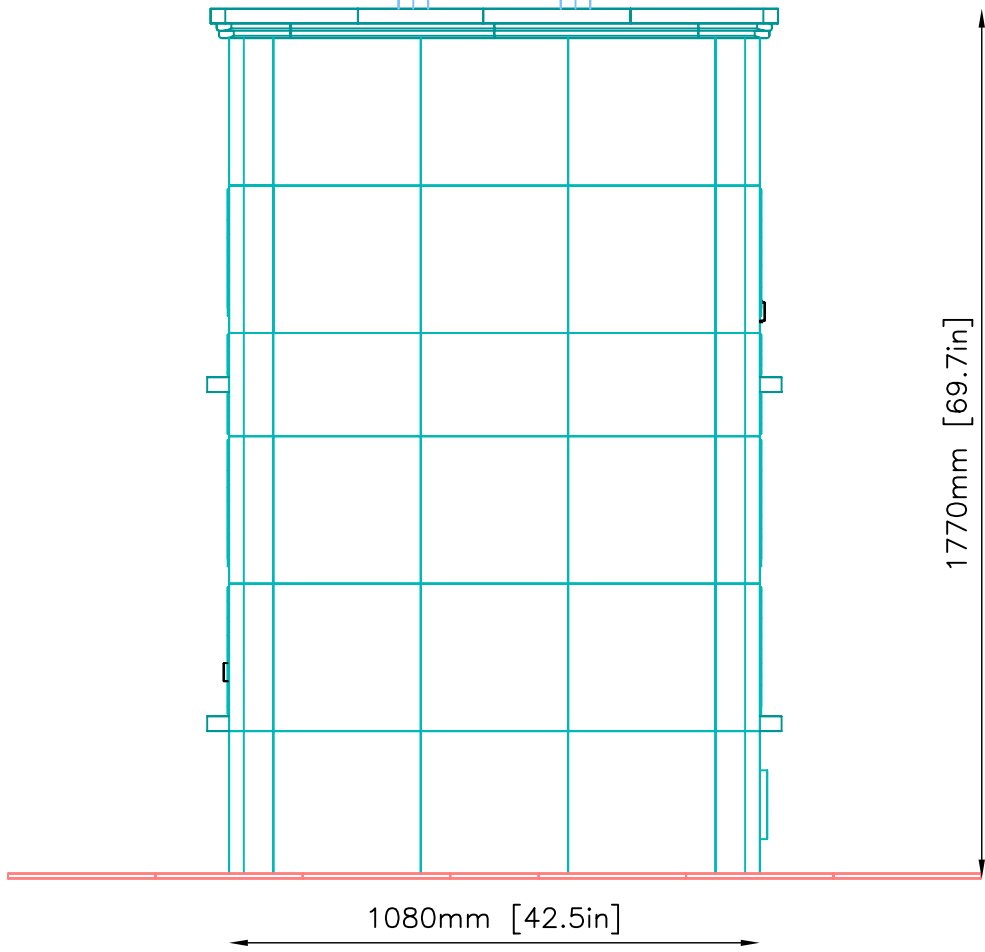
INFORMATION ONLY



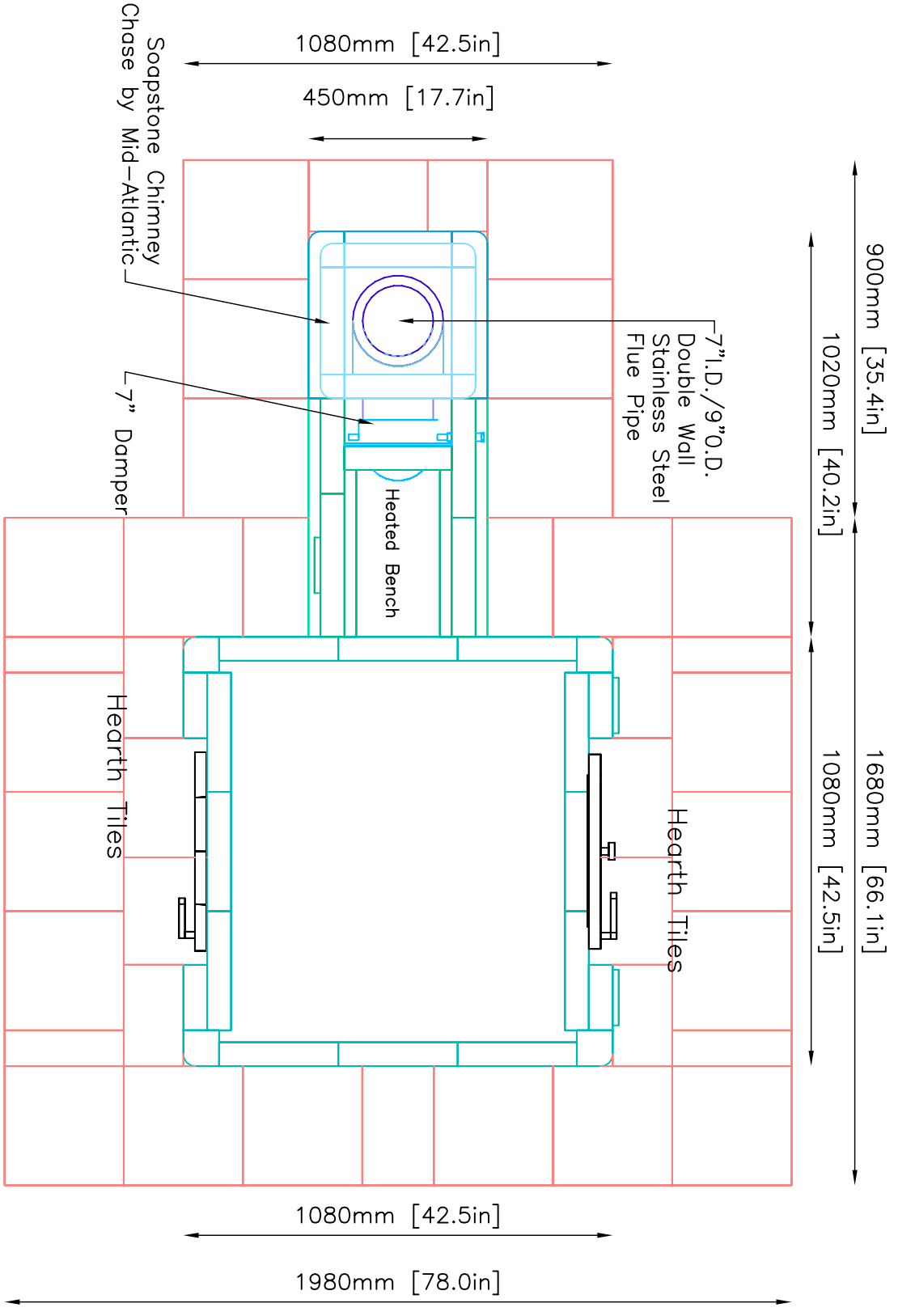
SIDE VIEW

INFORMATION ONLY

Soapstone Chimney Chase by Mid-Atlantic



PLAN VIEW



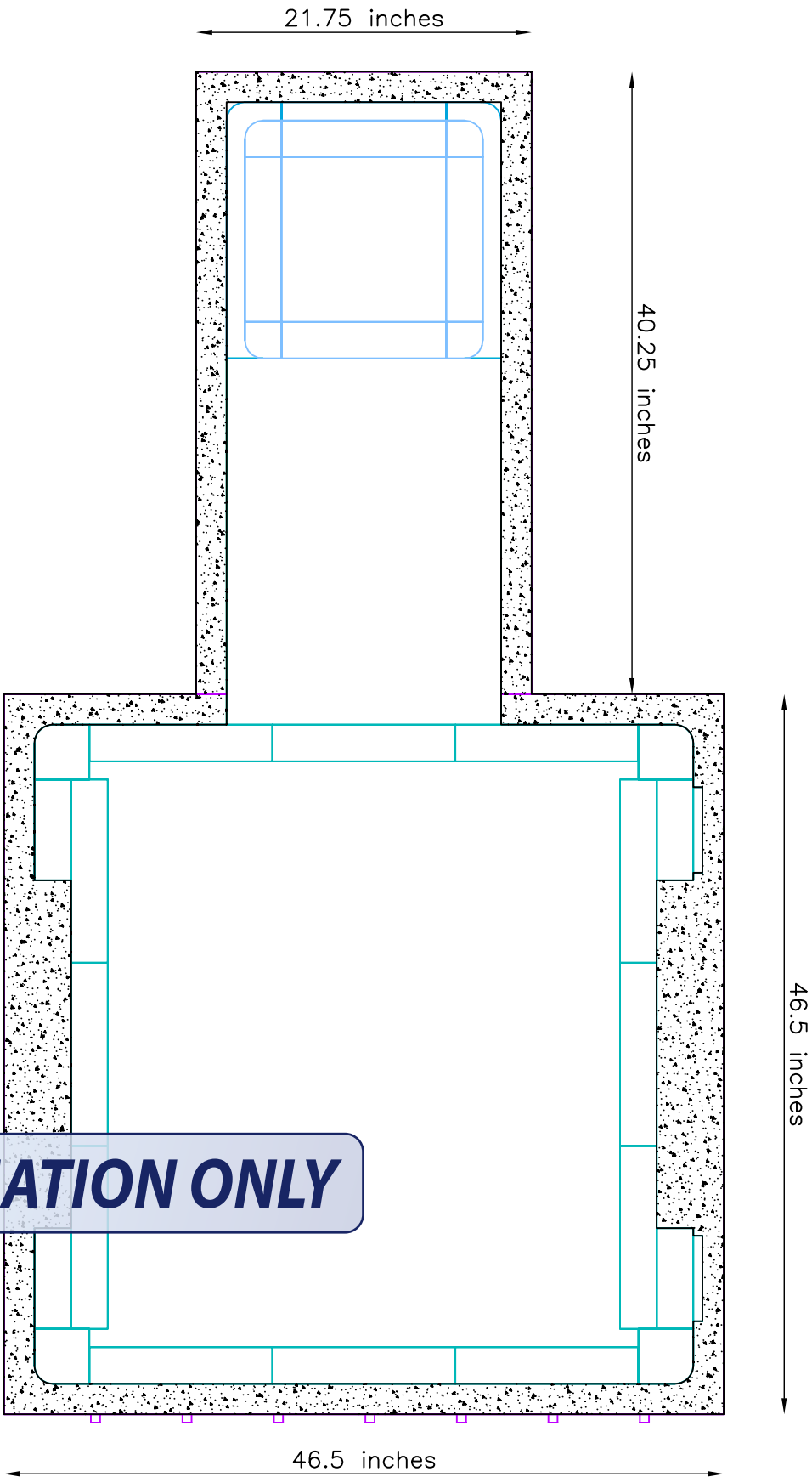
NOTE: Hearth Tiles CUT AND INSTALLED by others

INFORMATION ONLY

	MID-ATLANTIC MASONRY HEAT 1229 Harris Street Suite 1 Charlottesville, VA 22903 (434)979-9709 Fax 434-979-6416	PROJECT	WEESE	CONTRACT	5625	VIEW	PLAN	PAGE 5
		MODEL	TLU3150	DRAWN BY	D.P.BYRAM	DATE	2/12/04	

FOUNDATION SLAB

Minimum 4" Thick Poured Concrete With Rebar 6" O.C.
 Minimum Dimensions--2" from Base of Unit



NOTE:
 TOP OF FOUNDATION SLAB TO BE LEVEL AND FLUSH WITH SUB-FLOOR
 Tolerances: +/- 1/8" No additional cost to level slab
 +/- 1/4" \$150.00--\$200.00 additional cost to level slab
 +/- 1/2" \$500.00 additional cost to level slab

UNIT WEIGHT: 9900lbs.
 Owner/Contractor is responsible for engineering Foundation Slab to support weight of fireplace.

INFORMATION ONLY



MID-ATLANTIC MASONRY HEAT
 1229 Harris Street Suite 1
 Charlottesville, VA 22903
 (434)979-9709 Fax 434-979-6416

PROJECT WEESE
 MODEL TLU3150

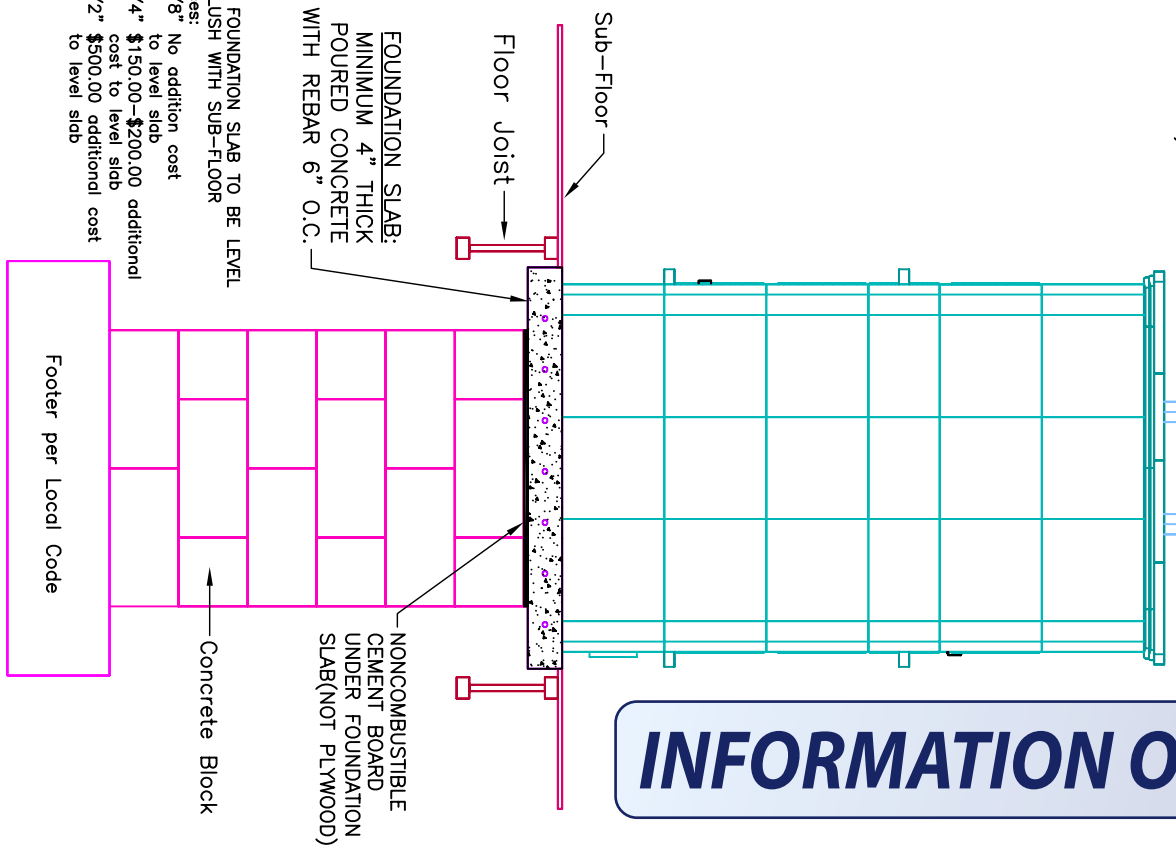
CONTRACT 5625
 DRAWN BY D.P.BYRAM

VIEW SUPPORT
 DATE 2/12/04

PAGE 6

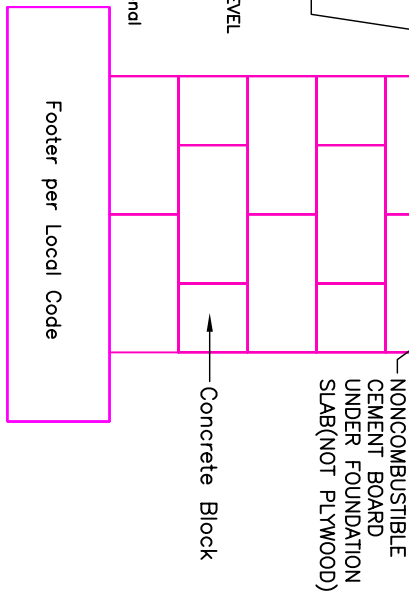
FOUNDATION SLAB:
 * MINIMUM 4" THICK
 WITH REBAR 6" O.C.
 * NON-COMBUSTIBLE
 CEMENT BOARD
 under foundation slab
 (NOT PLYWOOD)

INFORMATION ONLY

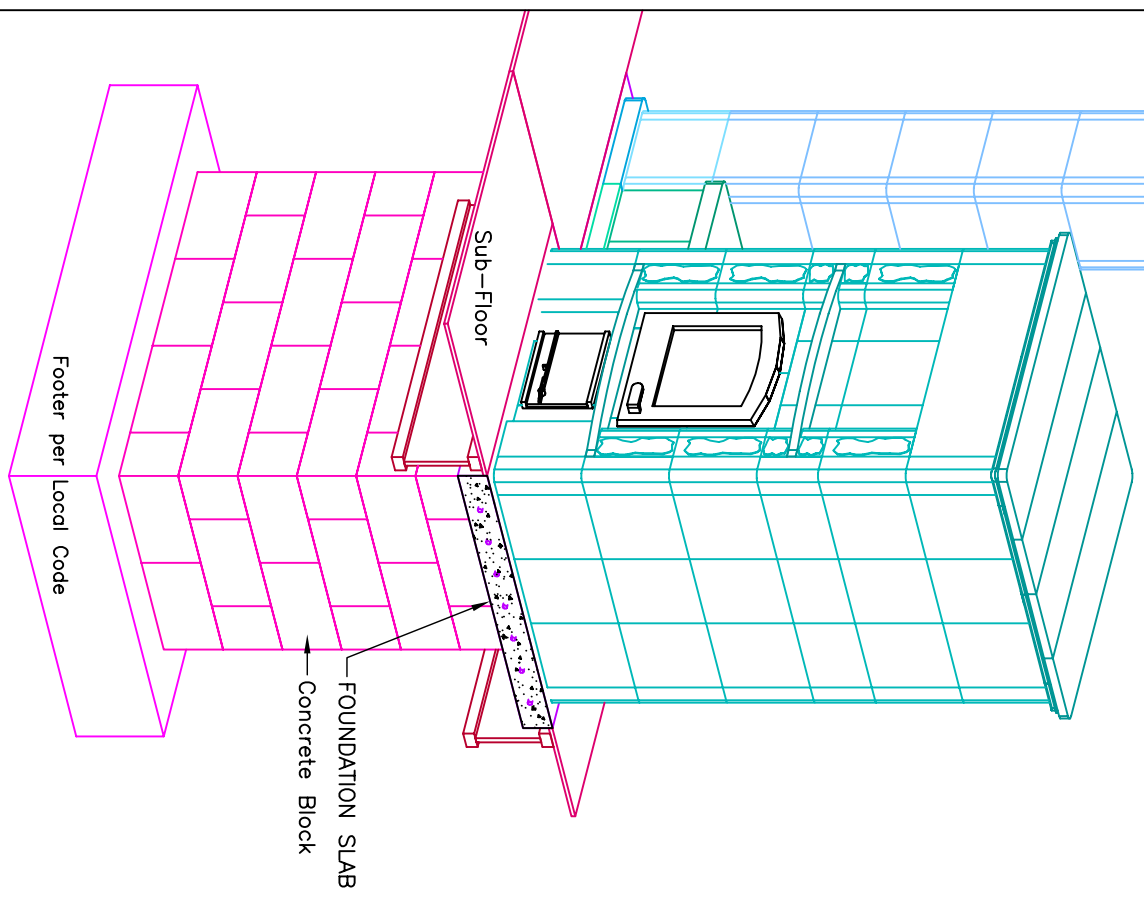


FOUNDATION SLAB:
 MINIMUM 4" THICK
 POURED CONCRETE
 WITH REBAR 6" O.C.

NOTE:
 TOP OF FOUNDATION SLAB TO BE LEVEL
 AND FLUSH WITH SUB-FLOOR
 Tolerances:
 +/- 1/8" No addition cost
 +/- 1/4" \$150.00-\$200.00 additional
 cost to level slab
 +/- 1/2" \$500.00 additional cost
 to level slab



UNIT WEIGHT: 9900lbs.
 Owner/Contractor is responsible for engineering Foundation Slab to support weight of fireplace.



MID-ATLANTIC MASONRY HEAT
 McIntire Business Park
 Charlottesville, VA 22903
 (434)979-9709 Fax 434-979-6416

PROJECT WEESE CONTRACT 5625
 MODEL TLU3150 DRAWN BY D.P.BYRAM

VIEW Foundation Slab
 DATE 2/12/04

PAGE 7