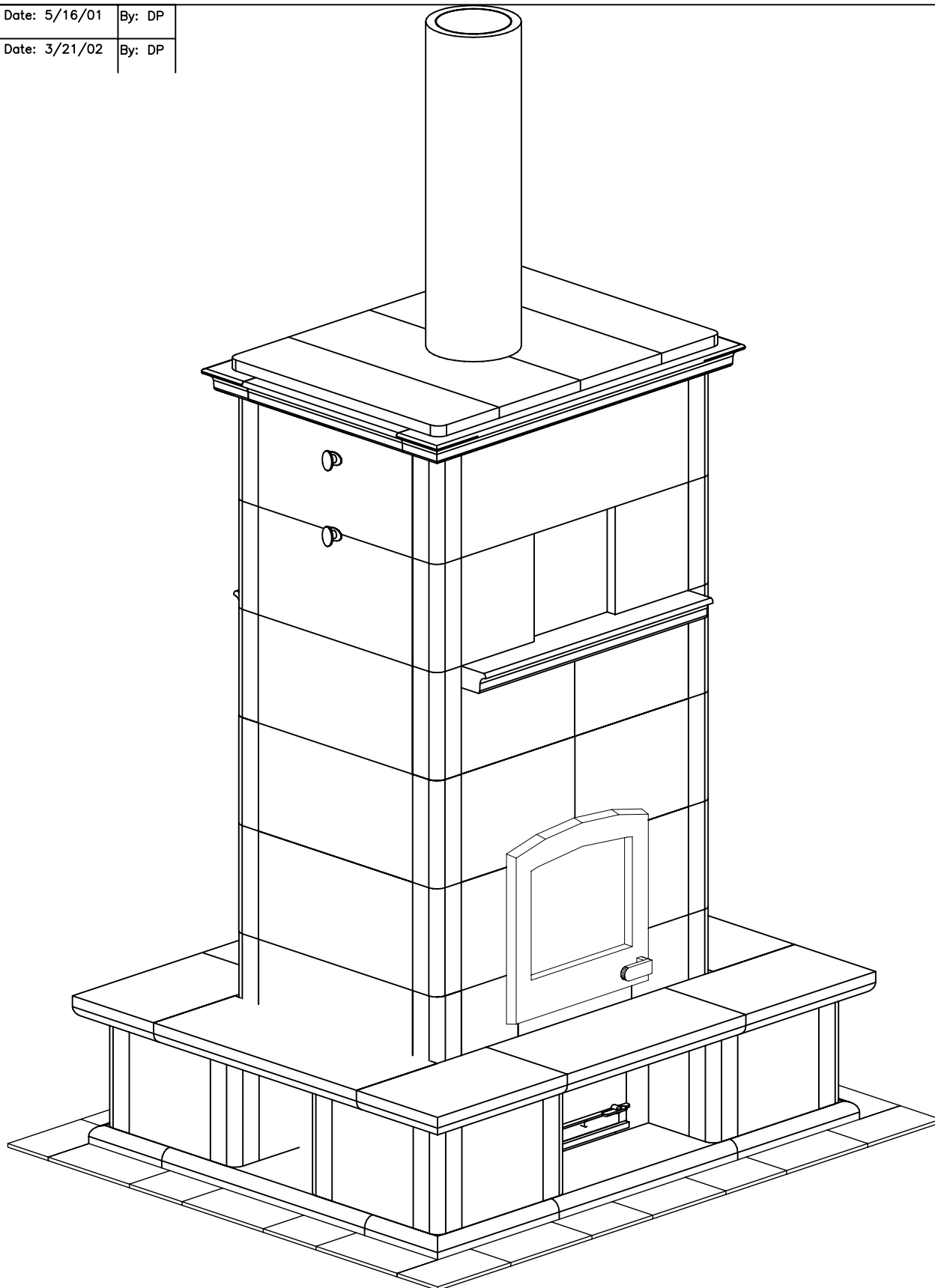



Revision: 1	Date: 5/16/01	By: DP
Revision: 2	Date: 3/21/02	By: DP



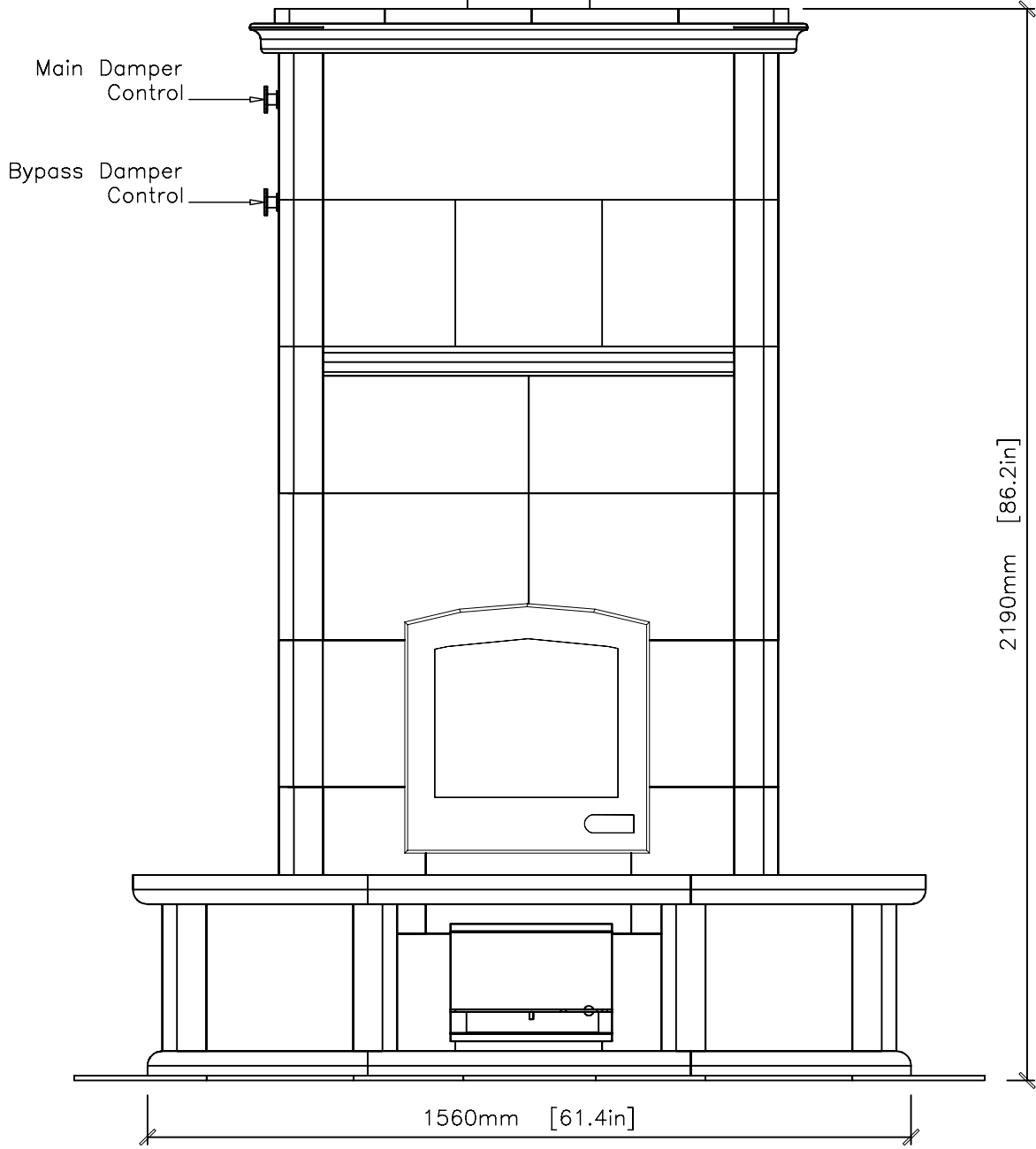
INFORMATION ONLY

TULIKIVI 	MID-ATLANTIC MASONRY HEAT McIntire Business Park 1229 Harris Street-Suite 1 Charlottesville, VA 22903	PROJECT	KELLY	CONTRACT	5044-A	VIEW	ISOMETRIC	PAGE 1
		MODEL	TTU2700	DRAWN BY	D.POWLEY	DATE	1/23/01	

Revision: 1	Date: 5/16/01	By: DP
Revision: 2	Date: 3/21/02	By: DP

INFORMATION ONLY

8" I.D./9" O.D.
 Double Wall
 Black Flue Pipe
 by others
 MINIMUM 6" clearance
 to Combustible Materials →



MID-ATLANTIC MASONRY HEAT
 McIntire Business Park
 1229 Harris Street-Suite 1
 Charlottesville, VA 22903

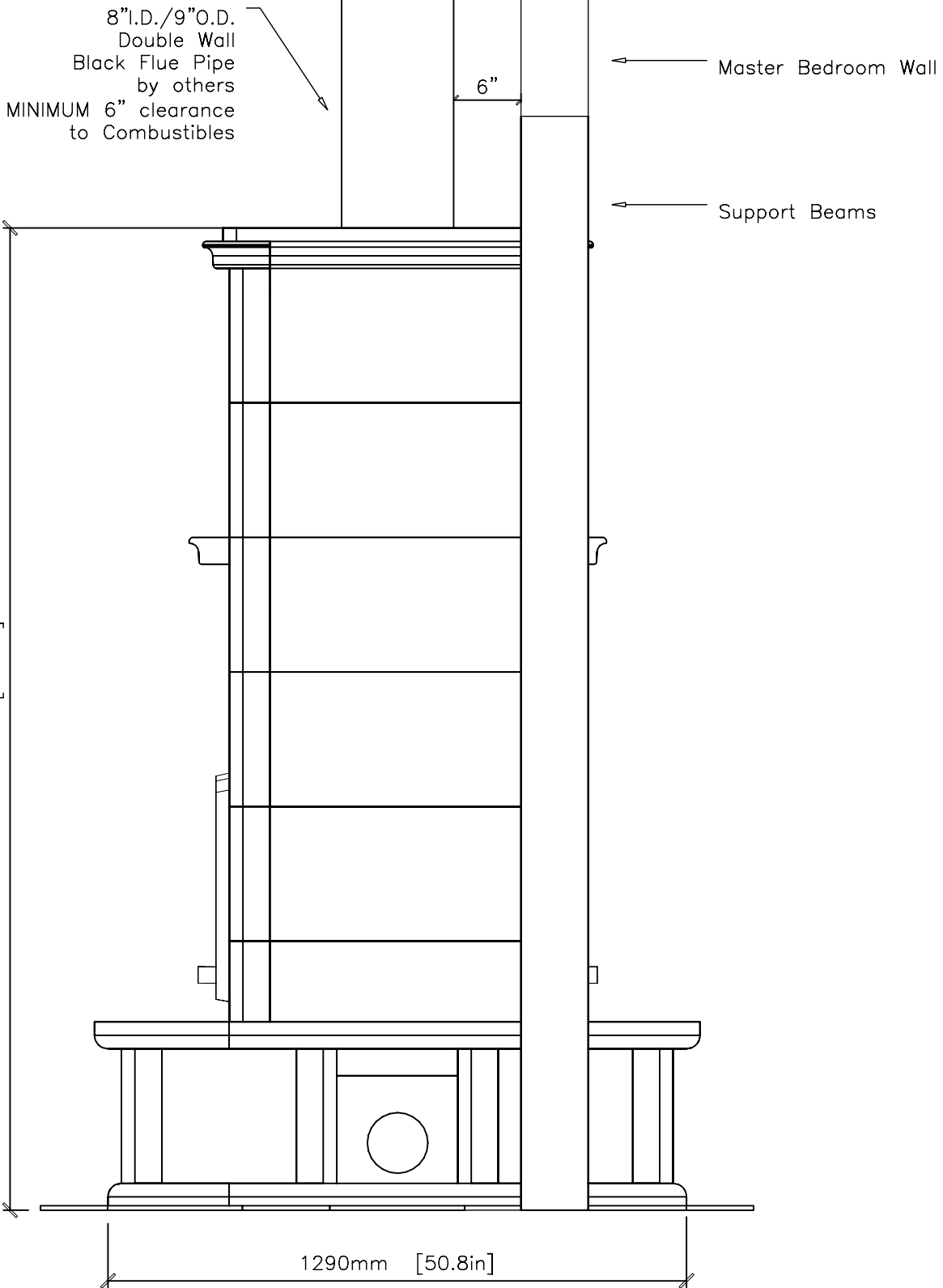
PROJECT KELLY
 MODEL TTU2700

CONTRACT 5044-A
 DRAWN BY D.POWLEY

VIEW FRONT
 DATE 1/23/01

PAGE 2

Revision: 1	Date: 5/16/01	By: DP
Revision: 2	Date: 3/21/02	By: DP



INFORMATION ONLY



MID-ATLANTIC MASONRY HEAT
McIntire Business Park
1229 Harris Street-Suite 1
Charlottesville, VA 22903

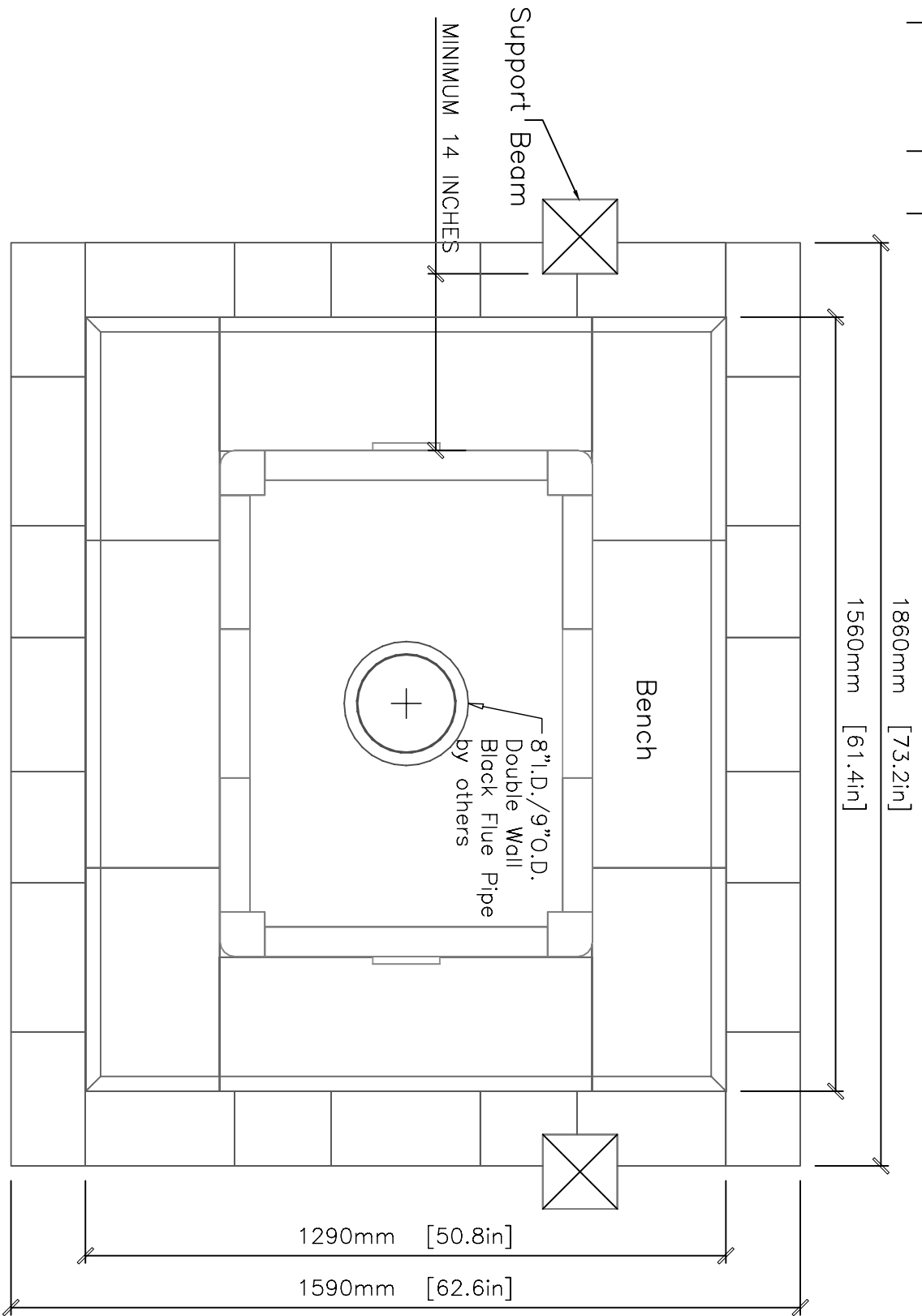
PROJECT KELLY
MODEL TTU2700

CONTRACT 5044-A
DRAWN BY D.POWLEY

VIEW SIDE
DATE 1/23/01

PAGE 3

Revision: 1	Date: 5/16/01	By: DP
Revision: 2	Date: 3/21/02	By: DP



NOTE:

Chimney—8".D./9"O.D. Double Wall Black Flue Pipe MINIMUM 6" clearance to Combustibles
 INSTALLED by others
 MINIMUM 14" from Vertical Wall of Fireplace to Combustible Materials
 Hearth tiles installed by others

INFORMATION ONLY



MID-ATLANTIC MASONRY HEAT
 McIntire Business Park
 1229 Harris Street—Suite 1
 Charlottesville, VA 22903

PROJECT	KELLY	CONTRACT	5044-A	VIEW	SUPPORT	PAGE	4
MODEL	TTU2700	DRAWN BY	D.POWLEY	DATE	1/23/01		