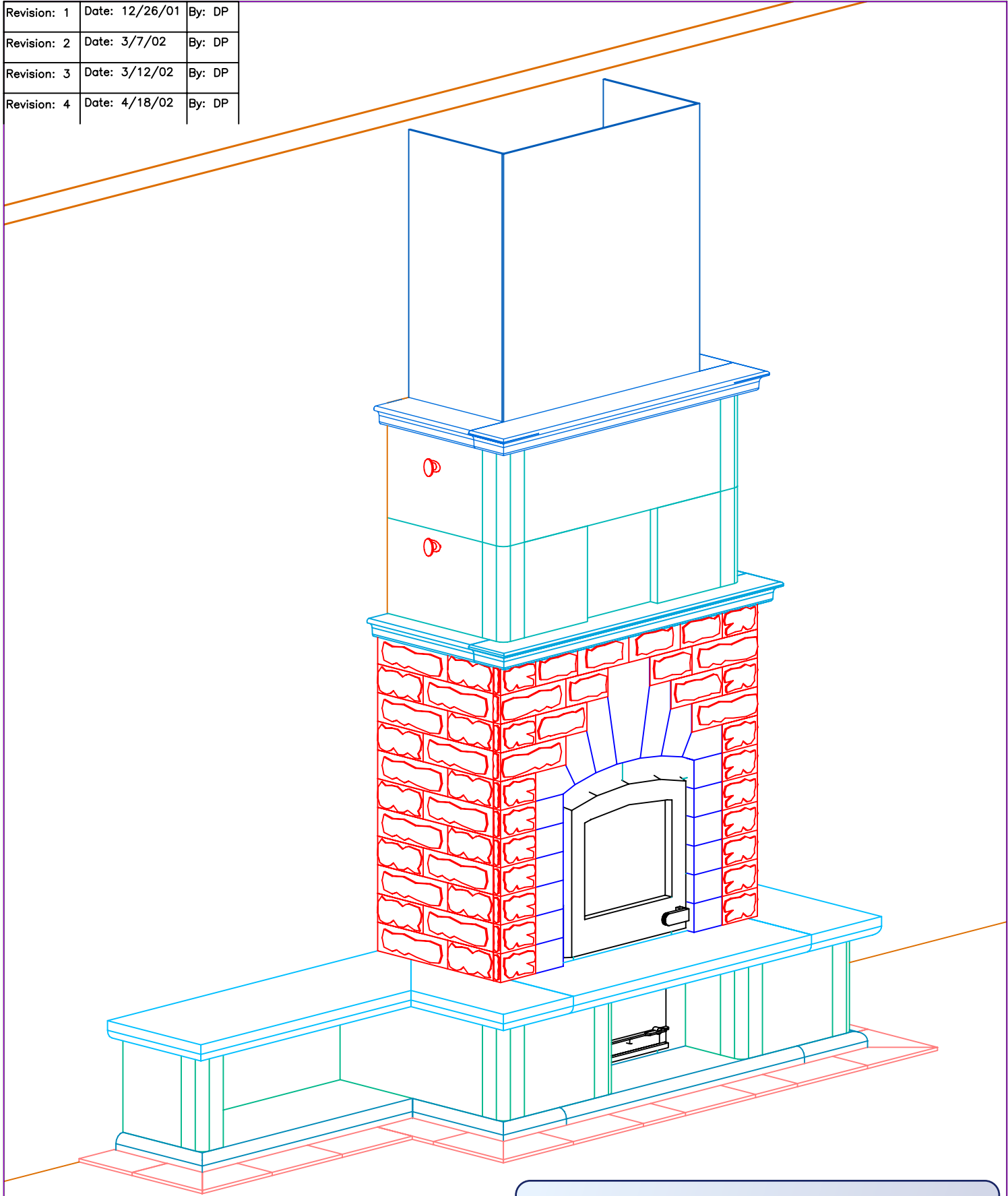



Revision: 1	Date: 12/26/01	By: DP
Revision: 2	Date: 3/7/02	By: DP
Revision: 3	Date: 3/12/02	By: DP
Revision: 4	Date: 4/18/02	By: DP



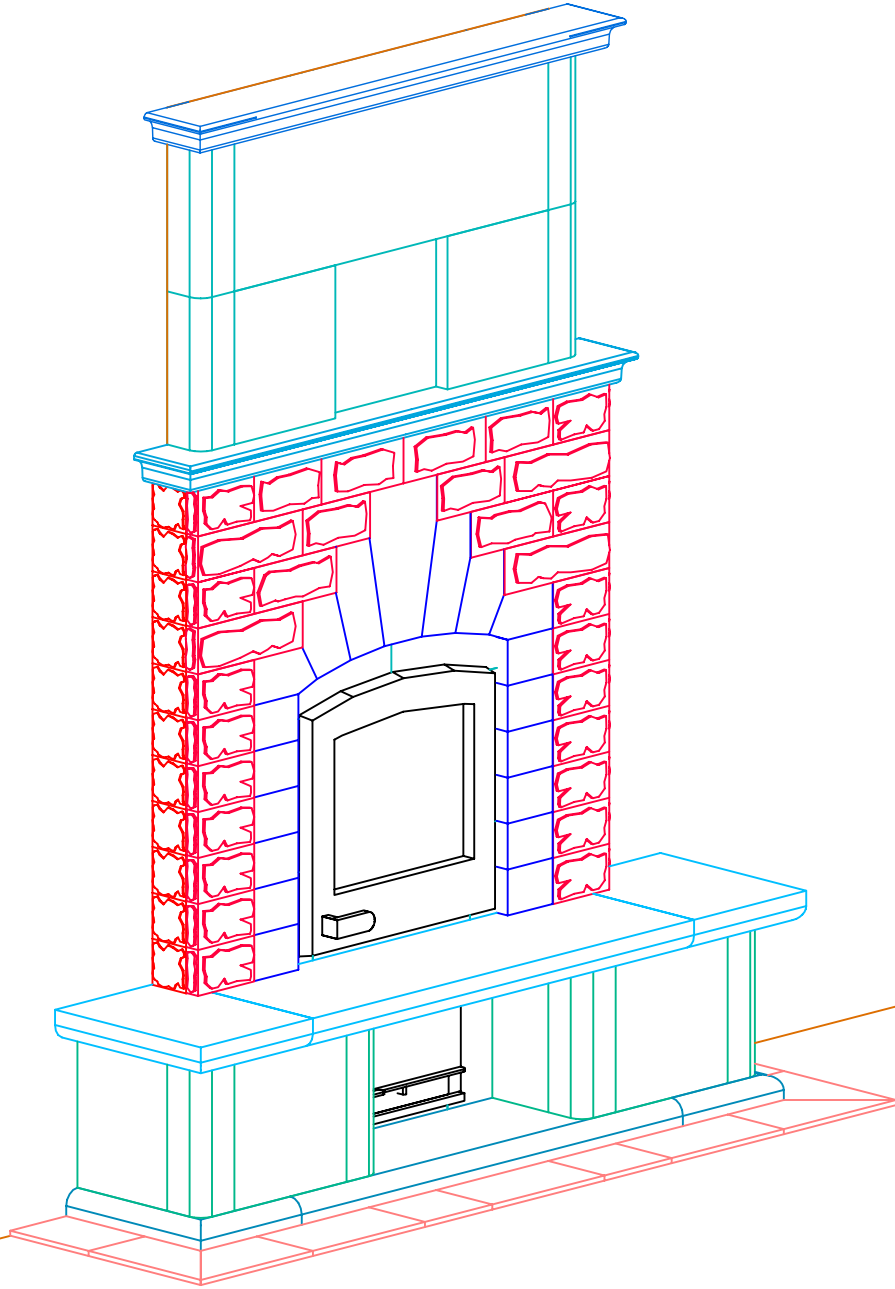
NOTE:
HEARTH TILES--INSTALLED BY OTHERS

INFORMATION ONLY

TULIKIVI 	MID-ATLANTIC MASONRY HEAT McIntire Business Park Charlottesville, VA 22903 (434)979-9707 Fax 434-979-6416	PROJECT	ORCUTT	VIEW	ISOMETRIC	PAGE 1
		MODEL	TTU2700/2	DRAWN BY	D.POWLEY	

Revision: 1	Date: 12/26/01	By: DP
Revision: 2	Date: 3/7/02	By: DP
Revision: 3	Date: 3/12/02	By: DP
Revision: 4	Date: 4/18/02	By: DP

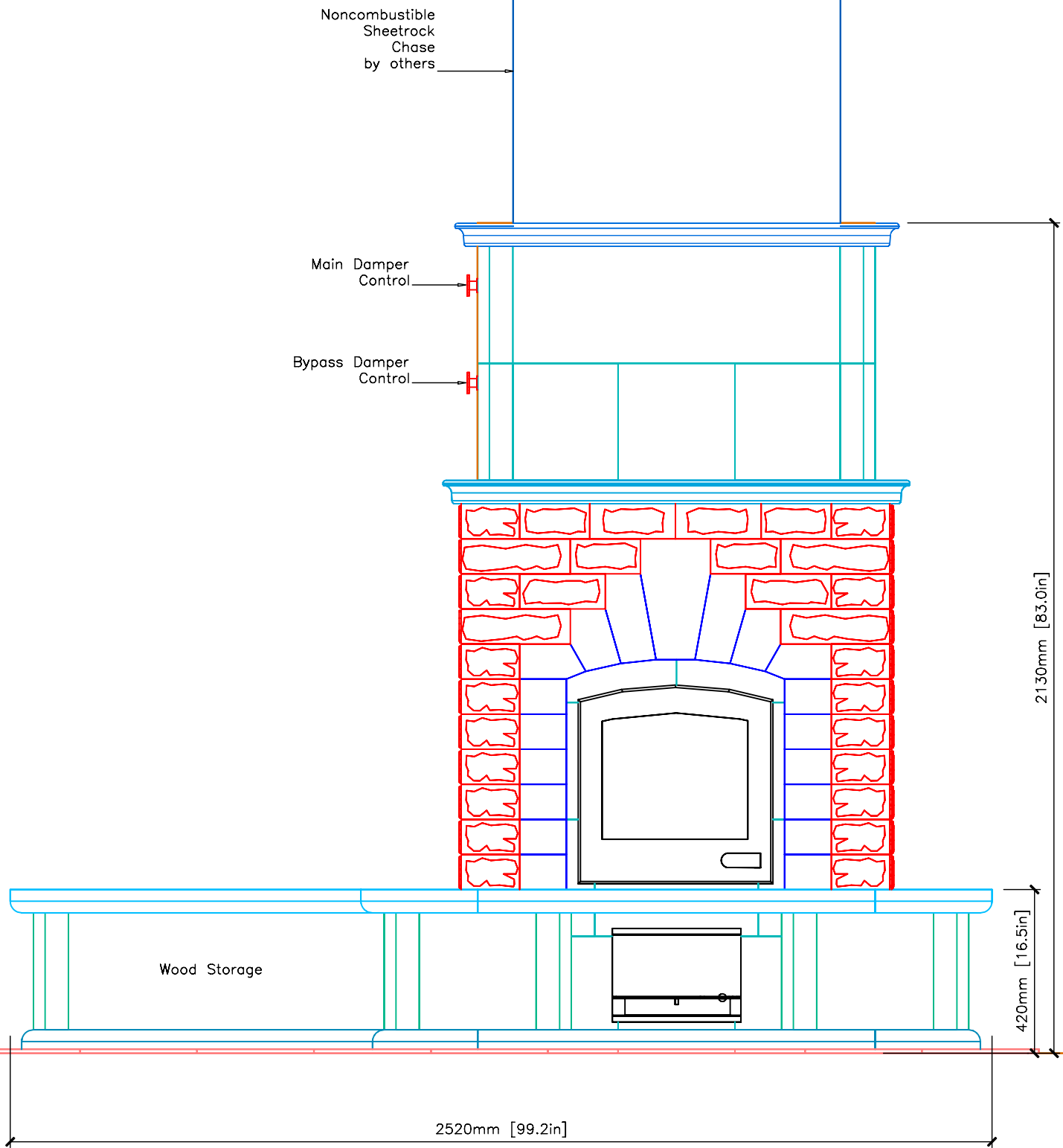
INFORMATION ONLY



NOTE:
HEARTH TILES--INSTALLED BY OTHERS

Revision: 1	Date: 12/26/01	By: DP
Revision: 2	Date: 3/7/02	By: DP
Revision: 3	Date: 3/12/02	By: DP
Revision: 4	Date: 4/18/02	By: DP

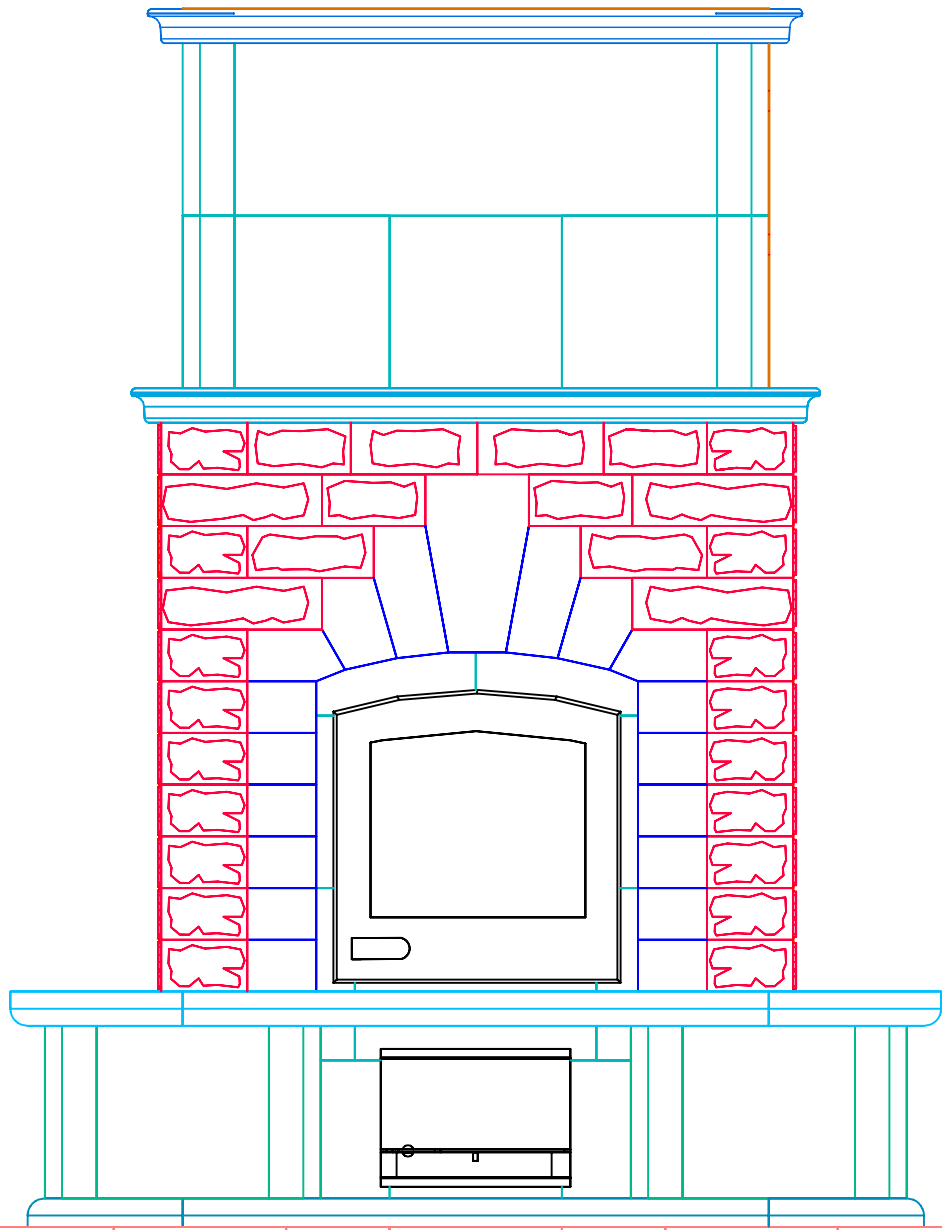
INFORMATION ONLY



NOTE:
HEARTH TILES--INSTALLED BY OTHERS

Revision: 1	Date: 12/26/01	By: DP
Revision: 2	Date: 3/7/02	By: DP
Revision: 3	Date: 3/12/02	By: DP
Revision: 4	Date: 4/18/02	By: DP

INFORMATION ONLY



NOTE:
HEARTH TILES--INSTALLED BY OTHERS



MID-ATLANTIC MASONRY HEAT
McIntire Business Park
Charlottesville, VA 22903
(434)979-9707 Fax 434-979-6416

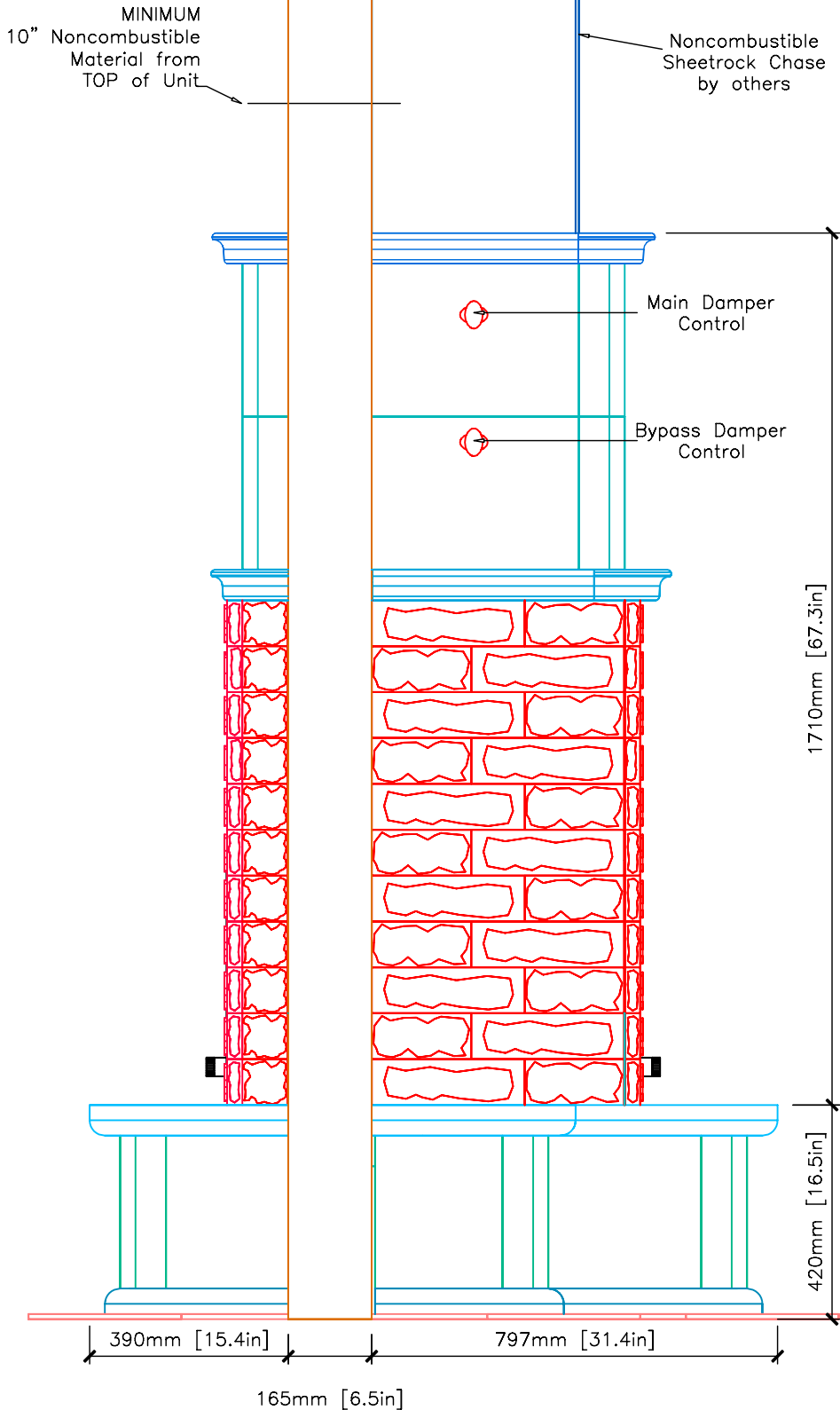
PROJECT ORCUTT
MODEL TTU2700/2

VIEW BACK
DRAWN BY D.POWLEY
DATE 11/26/01

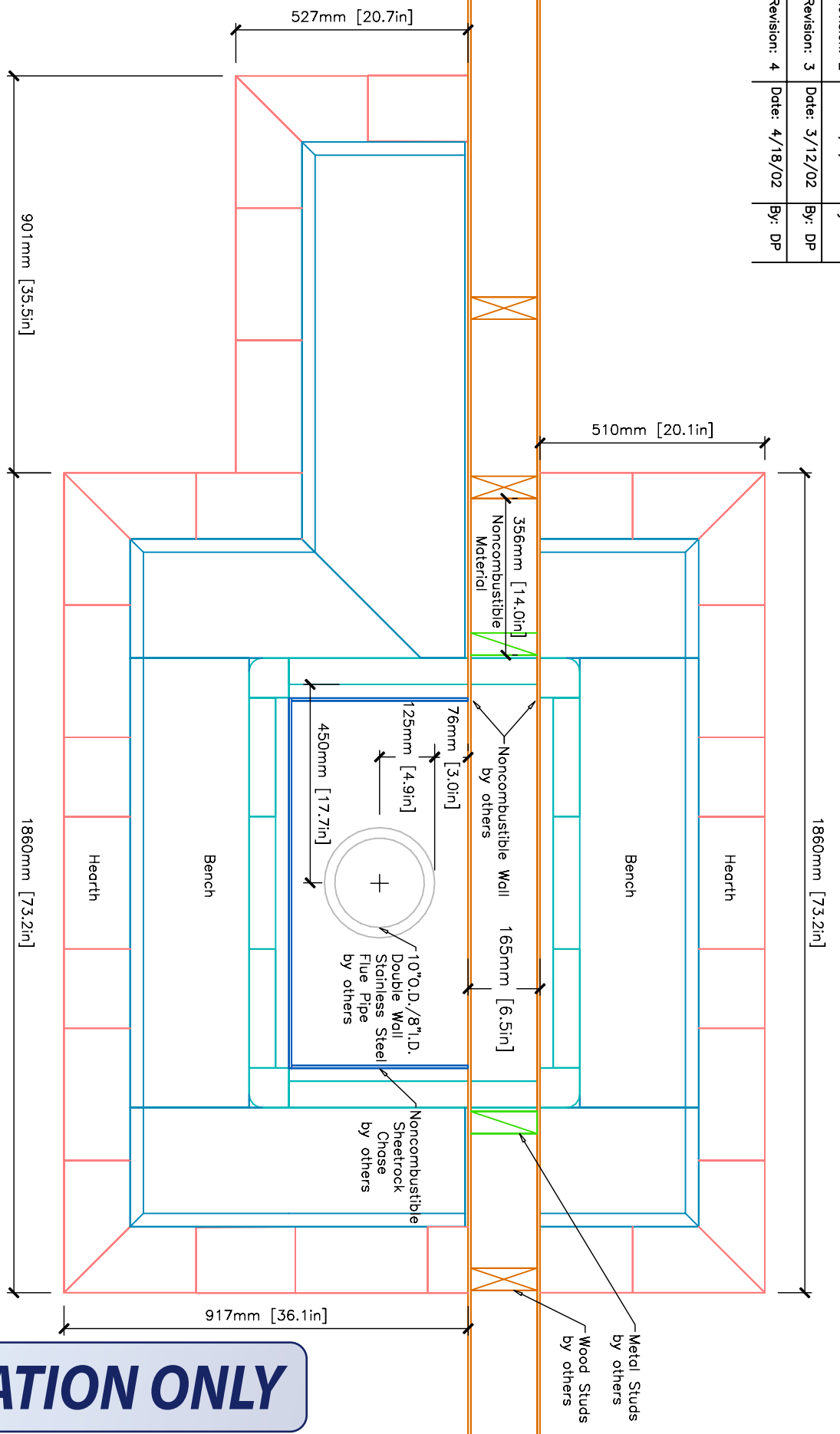
PAGE 4

Revision: 1	Date: 12/26/01	By: DP
Revision: 2	Date: 3/7/02	By: DP
Revision: 3	Date: 3/12/02	By: DP
Revision: 4	Date: 4/18/02	By: DP

INFORMATION ONLY



Revision: 1	Date: 12/26/01	By: DP
Revision: 2	Date: 3/7/02	By: DP
Revision: 3	Date: 3/12/02	By: DP
Revision: 4	Date: 4/18/02	By: DP



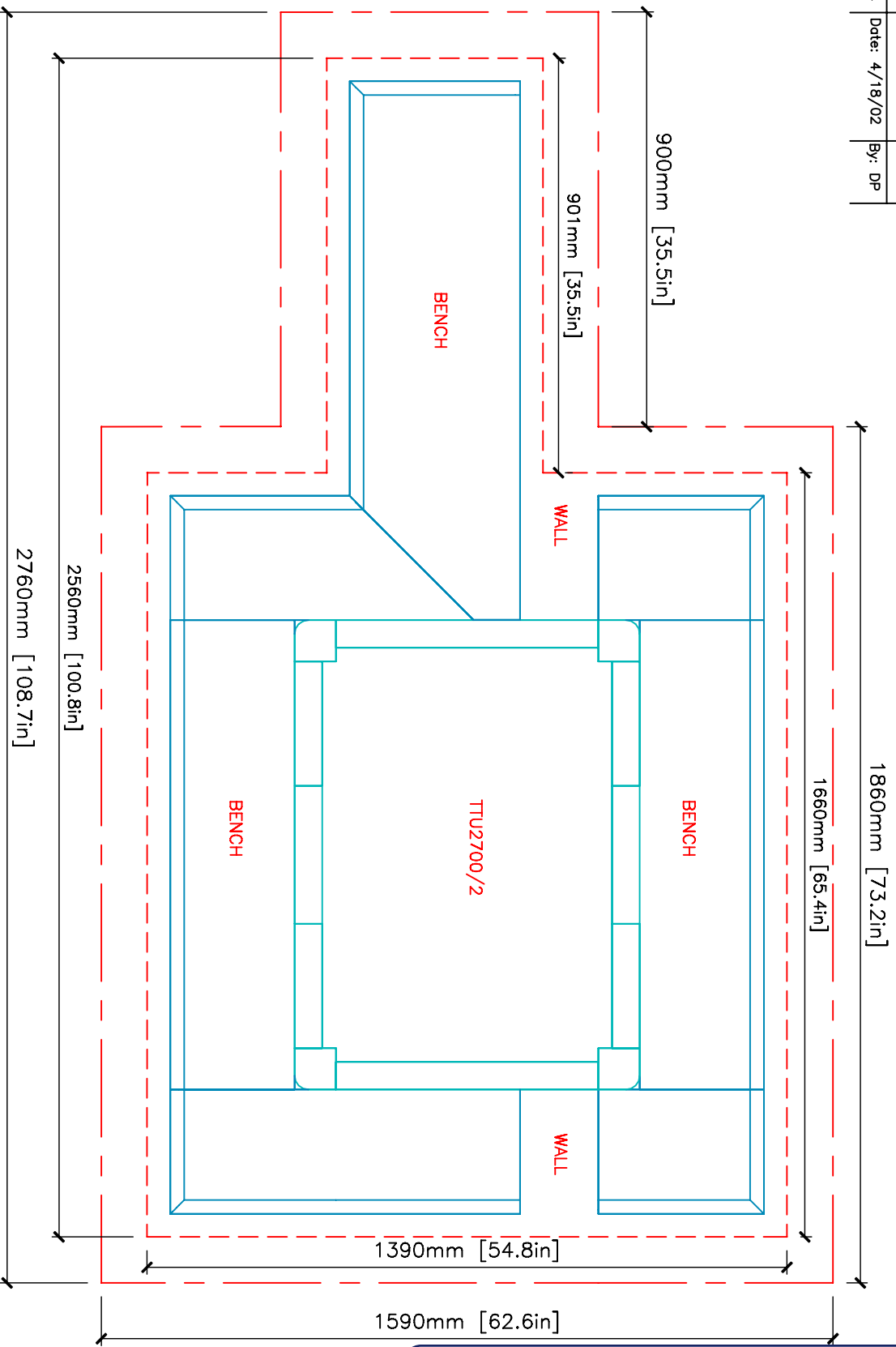
NOTES:

- *MINIMUM 14" noncombustible materials from SIDES of unit
- *MINIMUM 10" noncombustible materials from TOP of unit
- *Flue Pipe— 10"O.D./8" I.D. Double Wall Stainless Steel
- MINIMUM 2" from Combustible Wall
- *Hearth Tiles—INSTALLED by others

INFORMATION ONLY

Revision: 1	Date: 12/26/01	By: DP
Revision: 2	Date: 3/7/02	By: DP
Revision: 3	Date: 3/12/02	By: DP
Revision: 4	Date: 4/18/02	By: DP

CAPPING SLAB



NOTE:
 TOP OF CAPPING SLAB TO BE LEVEL WITH SUB-FLOOR
 Tolerances: +/- 1/8" No addition cost to adjust slab
 +/- 1/4" \$150.00 additional cost to adjust slab
 +/- 1/2" \$500.00 additional cost to adjust slab

Recommended Dimensions--Entire Hearth Area
 1590mm [62.6in] X 2760mm [108.7in]
 MINIMUM Dimensions--2" From Sides of Unit
 1390mm [54.8in] X 2560mm [100.8in]

INFORMATION ONLY



MID-ATLANTIC MASONRY HEAT
 McIntire Business Park
 Charlottesville, VA 22903
 (434)979-9707 Fax 434-979-6416

PROJECT ORCUTT
 MODEL TTU2700/2

VIEW CAPPING SLAB
 DRAWN BY D.POWLEY
 DATE 11/26/01

PAGE 7