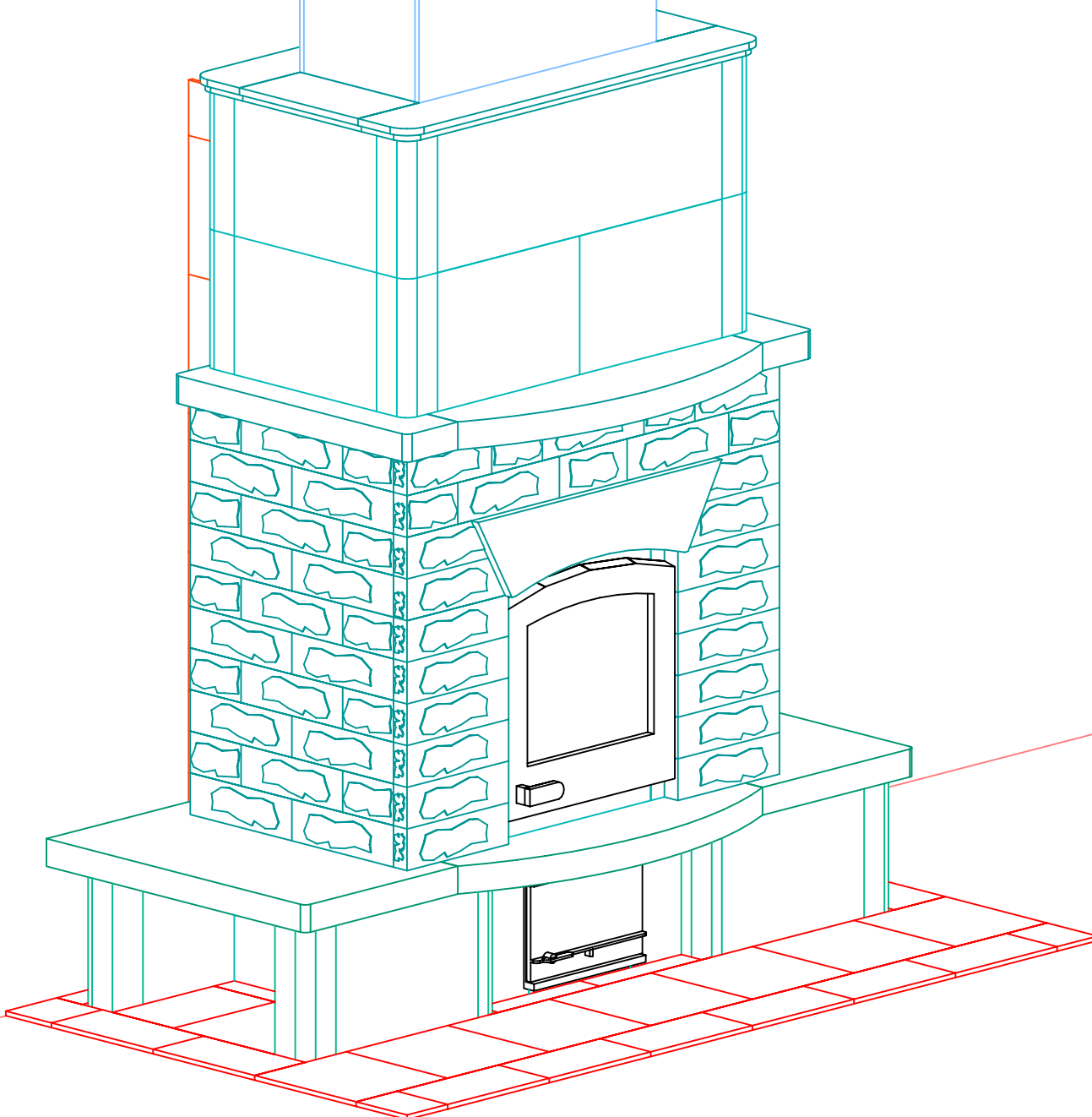


INFORMATION ONLY



NOTE: Hearth Tiles CUT AND INSTALLED by others



MID-ATLANTIC MASONRY HEAT
 1229 Harris Street Suite 1
 Charlottesville, VA 22903
 (434)979-9709 Fax 434-979-6416

PROJECT HOE
 MODEL TU2200

CONTRACT 5614
 DRAWN BY D.P.BYRAM

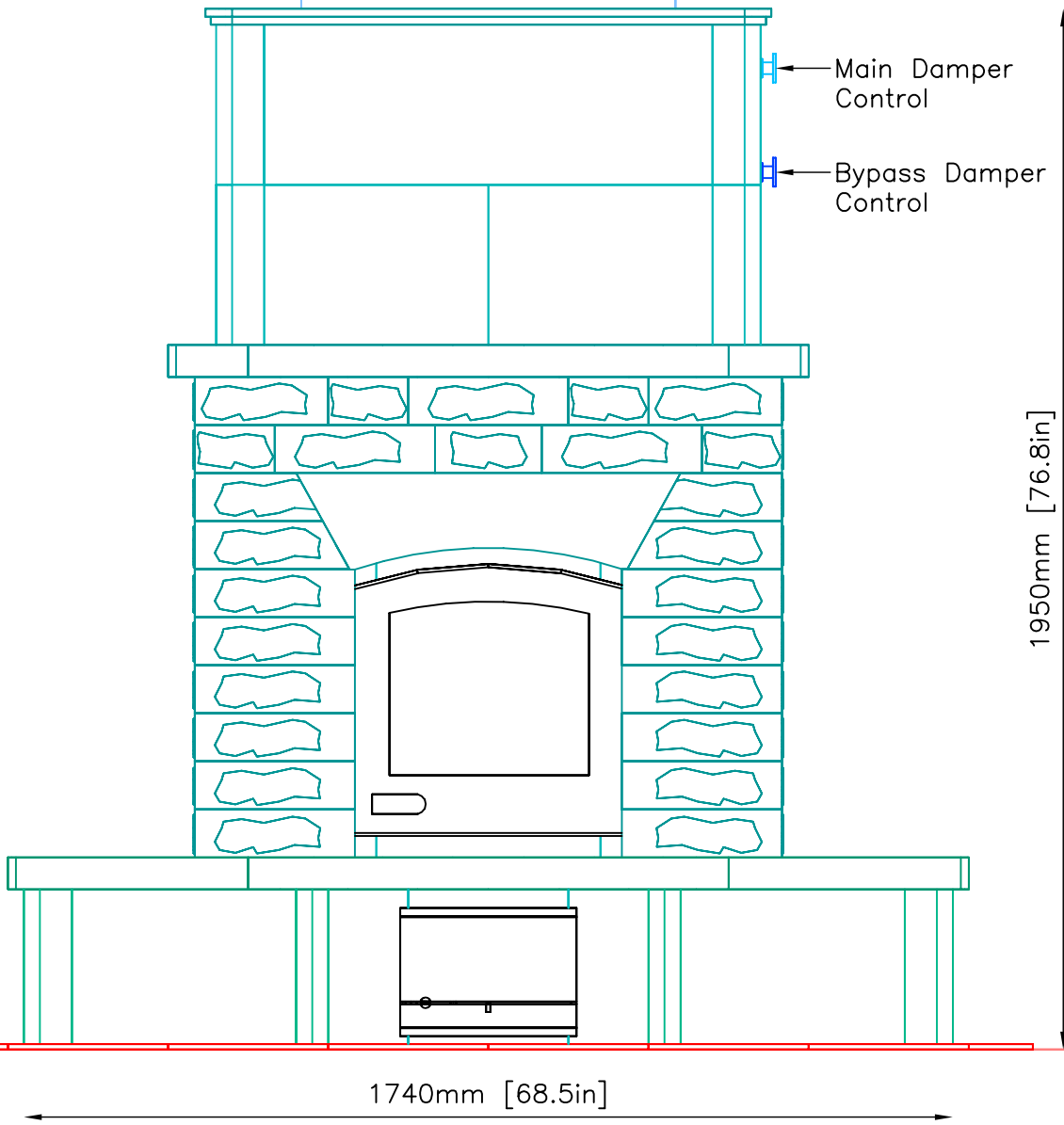
VIEW PERSPECTIVE
 DATE 1/13/04

PAGE 1

FRONT VIEW

INFORMATION ONLY

← Sheetrock Chimney Chase
by others
MINIMUM 10" Clearance to
combustible from TOP of Fireplace.
Use Metal Studs and Cement
Board.

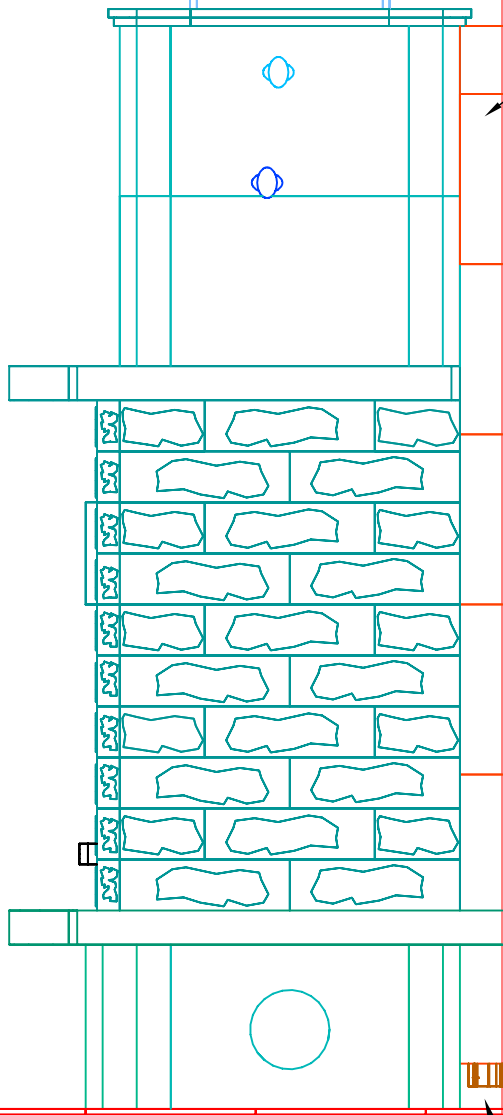


SIDE VIEW

INFORMATION ONLY

Sheetrock Chimney Chase
by others
MINIMUM 10" Clearance to
combustible from TOP of Fireplace.
Use Metal Studs and Cement
Board.

1935mm [76.2in]



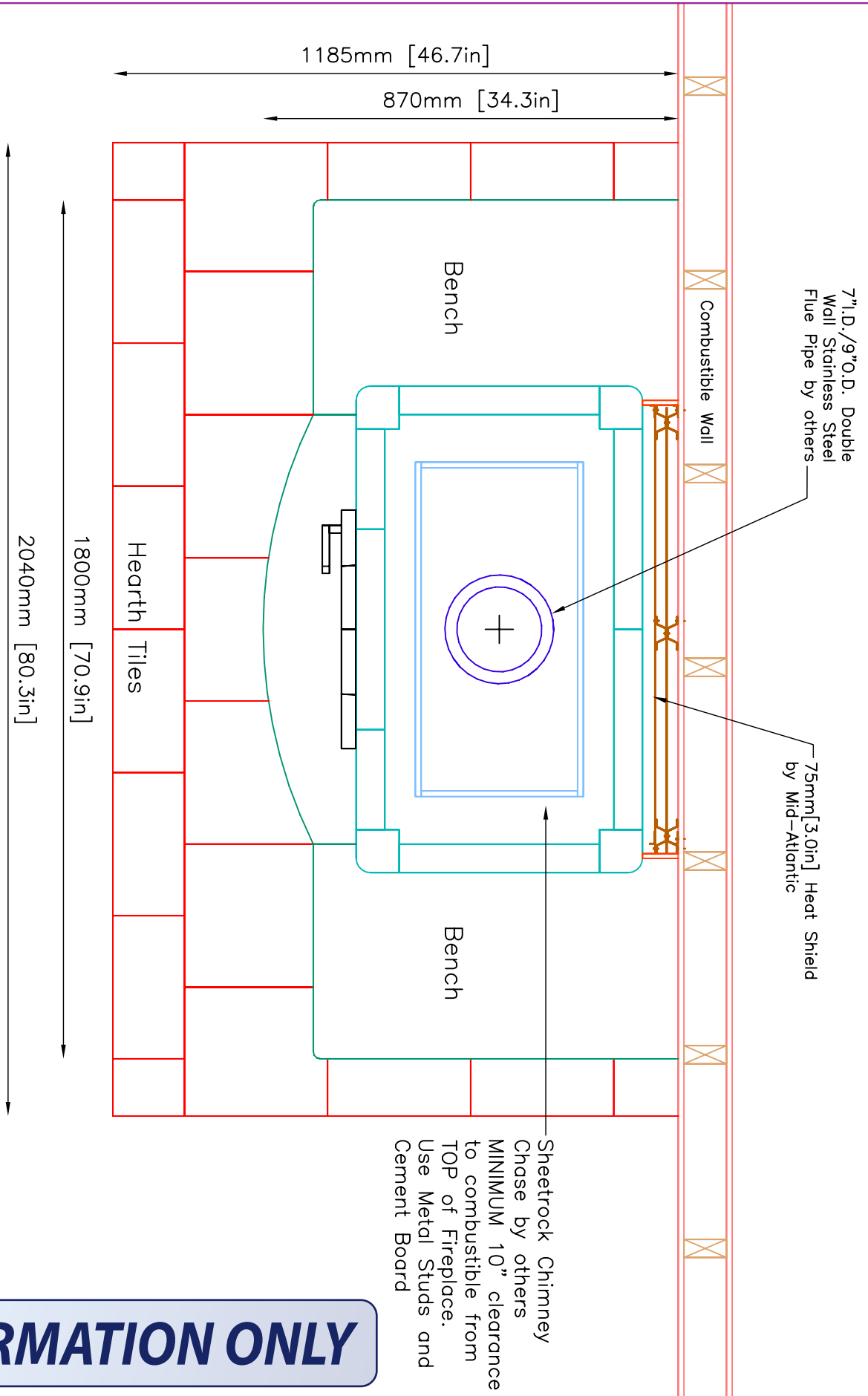
75mm[3.0in] Heat Shield
by Mid-Atlantic Masonry Heat

Combustible Wall
by others

660mm [26.0in]

90mm[3.5in] Air Intake
MUST be kept open

PLAN VIEW



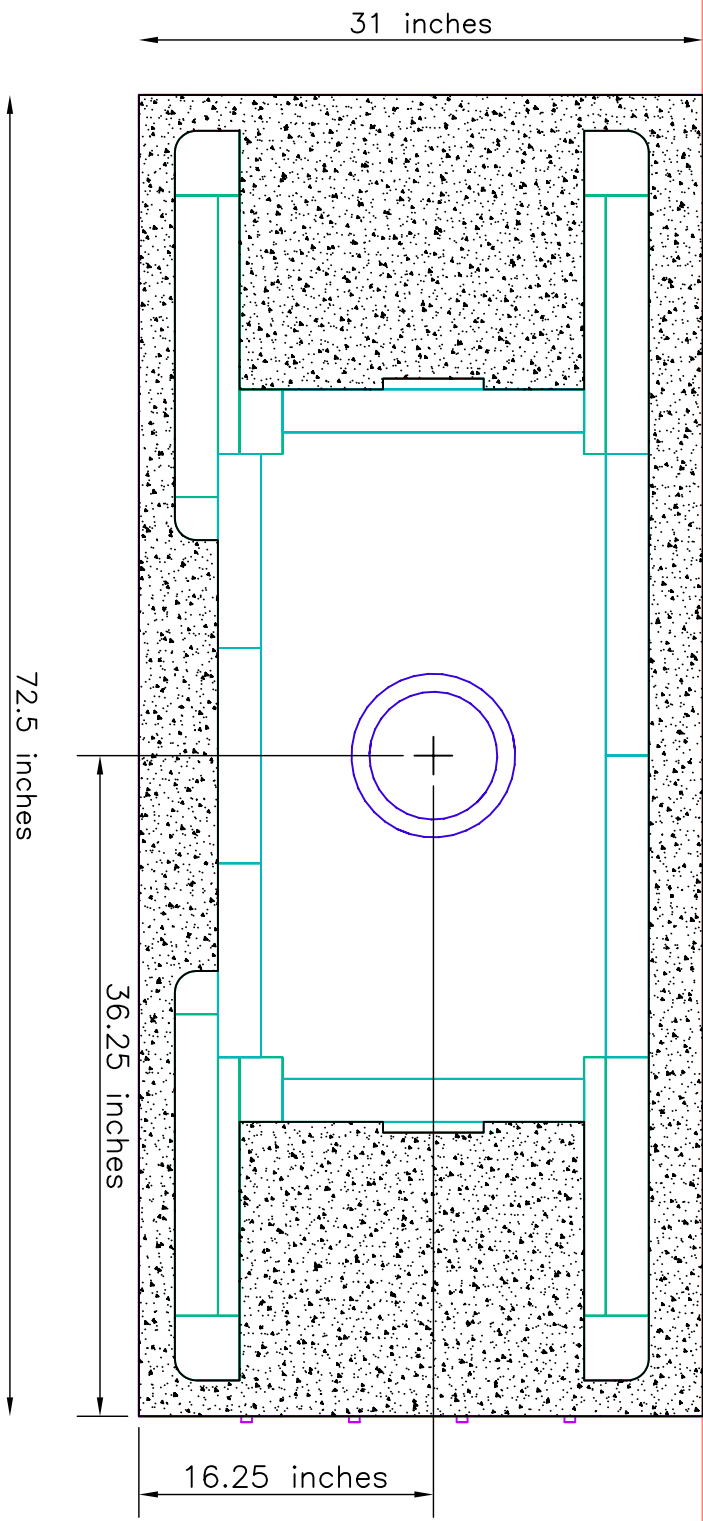
NOTE: Hearth Tiles CUT AND INSTALLED by others

INFORMATION ONLY

	MID-ATLANTIC MASONRY HEAT 1229 Harris Street Suite 1 Charlottesville, VA 22903 (434)979-9709 Fax 434-979-6416	PROJECT	HOE	CONTRACT	5614	VIEW	PLAN	PAGE 4
		MODEL	TU2200	DRAWN BY	D.P.BYRAM	DATE	1/13/04	

FOUNDATION SLAB

Minimum 4" Thick Poured Concrete With Rebar 6"O.C.
 Minimum Dimensions—2" from Base of Unit



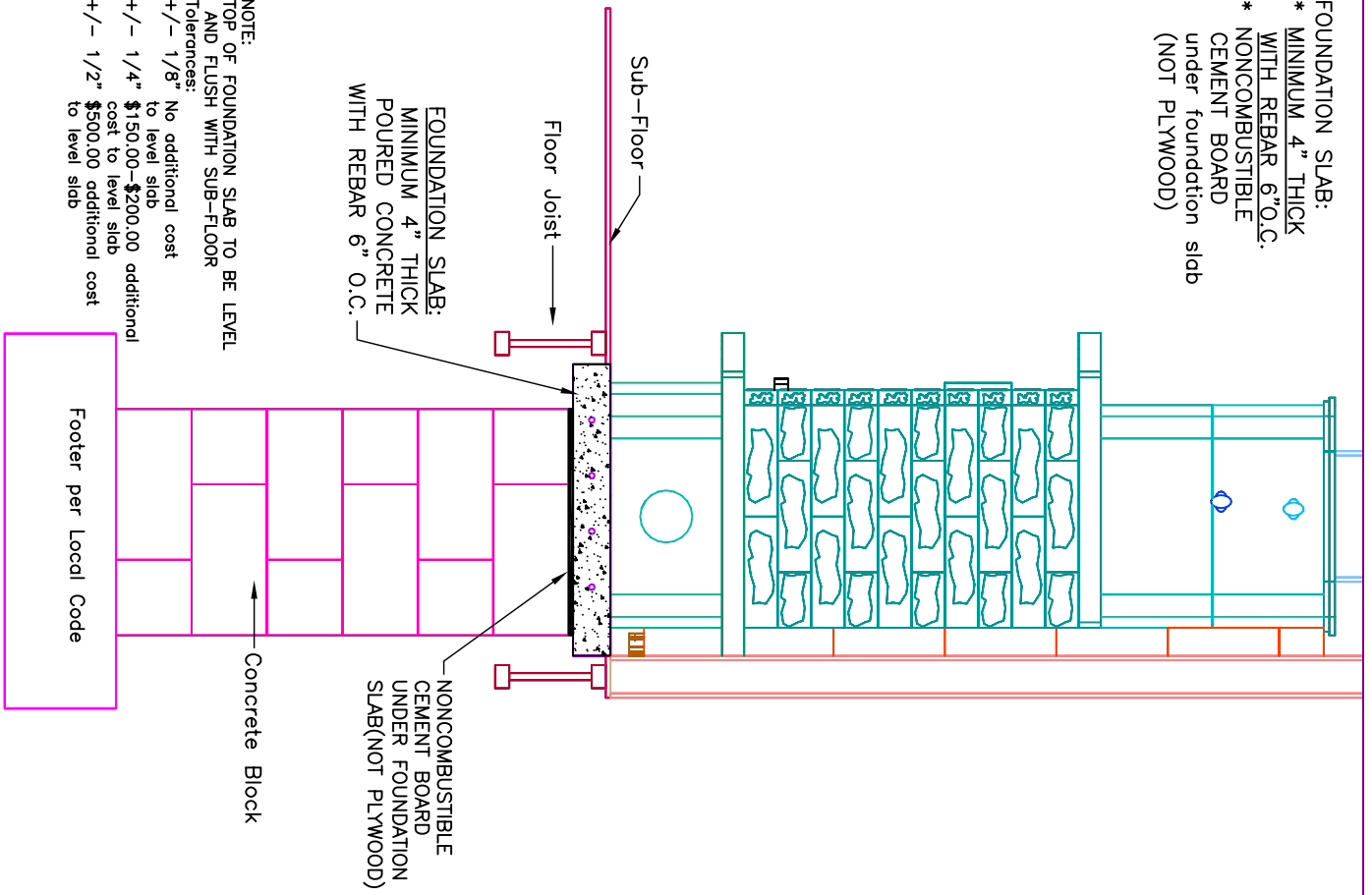
FLUE LOCATION:
 1 6¼" x 3 6¼" From Lower Right Corner of
 Foundation Slab to CENTER of Flue Pipe.

NOTE:
 TOP OF FOUNDATION SLAB TO BE LEVEL AND FLUSH WITH SUB-FLOOR
 Tolerances: +/- 1/8" No additional cost to level slab
 +/- 1/4" \$150.00 additional cost to level slab
 +/- 1/2" \$500.00 additional cost to level slab

UNIT WEIGHT: 6400lbs.
 Owner/Contractor is responsible for engineering Foundation Slab to support weight of fireplace.

INFORMATION ONLY

FOUNDATION SLAB:
 * MINIMUM 4" THICK
 WITH REBAR 6" O.C.
 * NONCOMBUSTIBLE
 CEMENT BOARD
 under foundation slab
 (NOT PLYWOOD)



NOTE:
 TOP OF FOUNDATION SLAB TO BE LEVEL
 AND FLUSH WITH SUB-FLOOR
 Tolerances:
 +/- 1/8" No additional cost
 to level slab
 +/- 1/4" \$150.00-\$200.00 additional
 cost to level slab
 +/- 1/2" \$500.00 additional cost
 to level slab

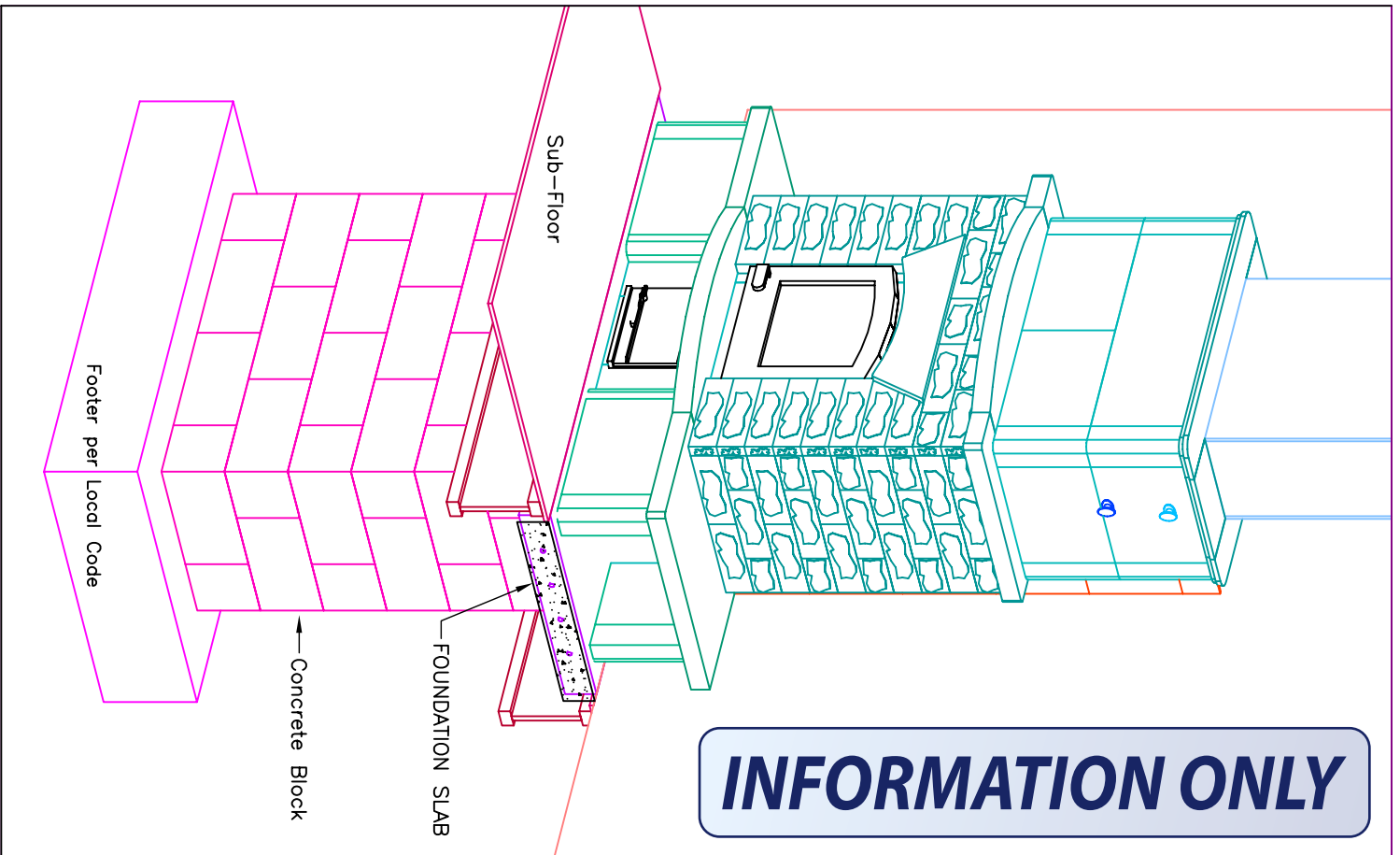
FOUNDATION SLAB:
 MINIMUM 4" THICK
 POURED CONCRETE
 WITH REBAR 6" O.C.

NONCOMBUSTIBLE
 CEMENT BOARD
 UNDER FOUNDATION
 SLAB (NOT PLYWOOD)

Concrete Block

Footer per Local Code

INFORMATION ONLY



UNIT WEIGHT: 6400lbs.
 Owner/Contractor is responsible for engineering Foundation Slab to support weight of fireplace.