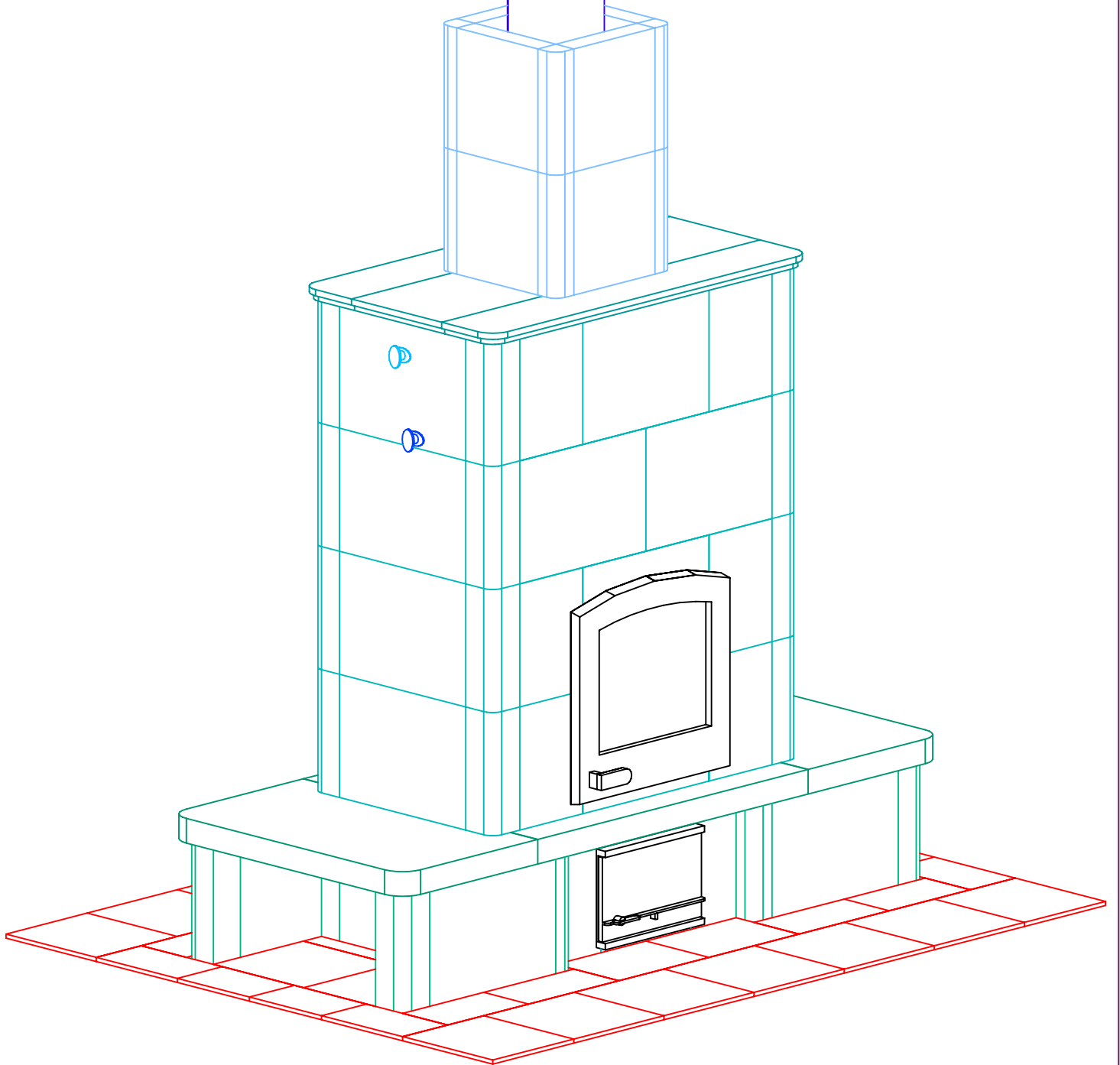


# INFORMATION ONLY



NOTE: Hearth Tiles CUT AND INSTALLED by others



MID-ATLANTIC MASONRY HEAT  
1229 Harris Street Suite 1  
Charlottesville, VA 22903  
(434)979-9709 Fax 434-979-6416

PROJECT MacMillian  
MODEL TU2200-Custom

CONTRACT 5642  
DRAWN BY D.P.BYRAM

VIEW PERSPECTIVE  
DATE 4/13/04

PAGE 1

# INFORMATION ONLY

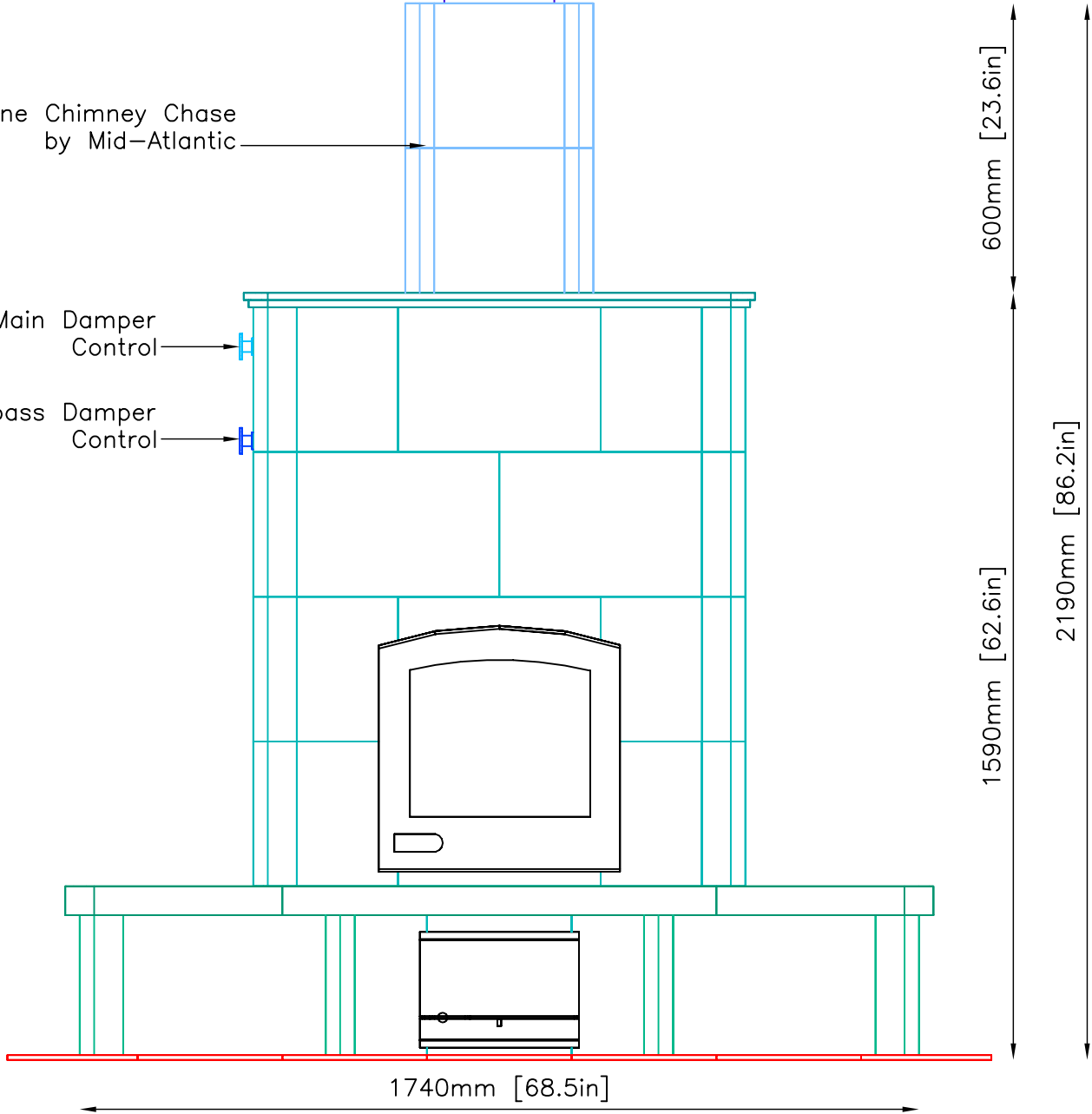
## FRONT VIEW

7" I.D./9" O.D. Double Wall  
Stainless Steel Flue Pipe  
by others

Soapstone Chimney Chase  
by Mid-Atlantic

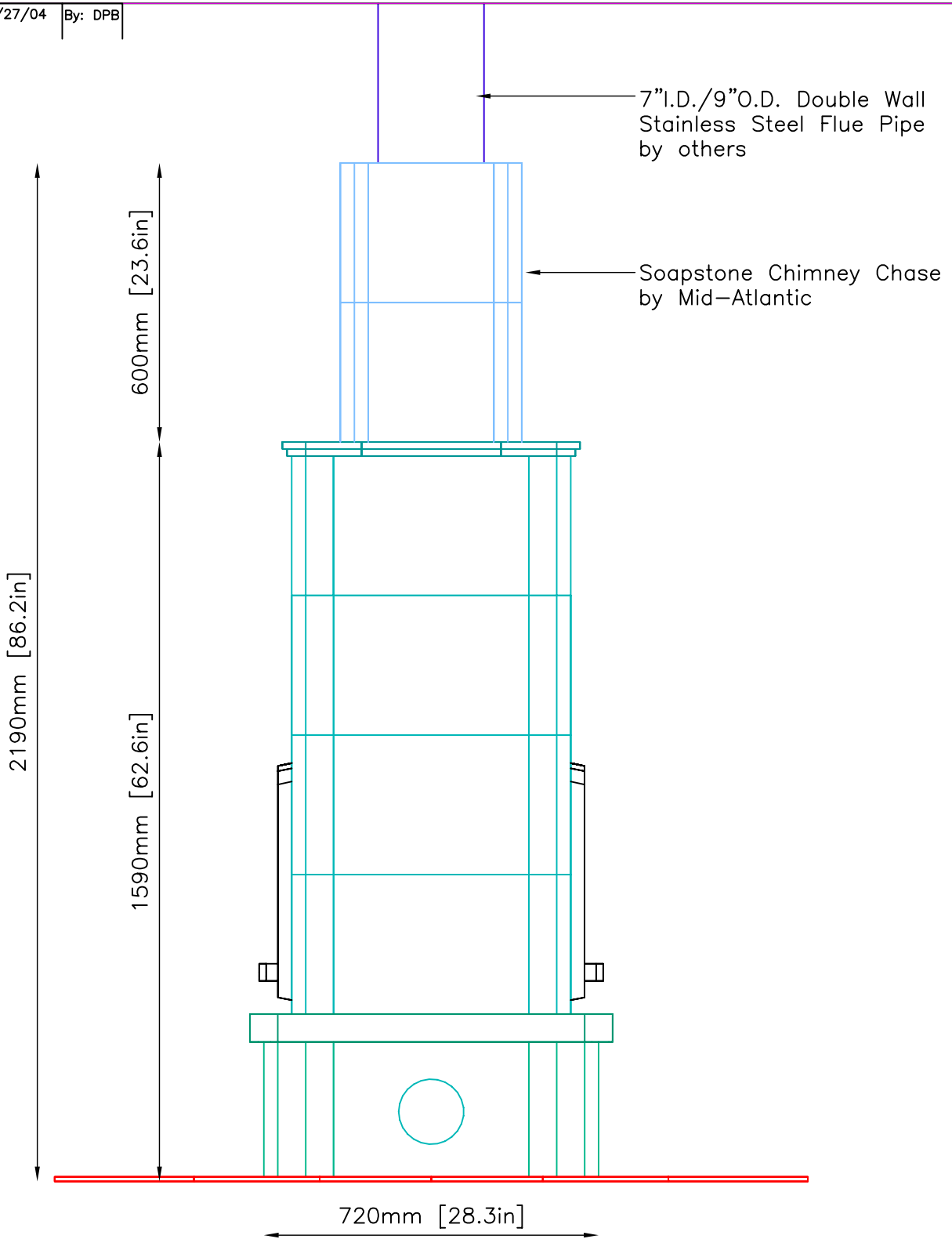
Main Damper Control

Bypass Damper Control



NOTE: Hearth Tiles CUT AND INSTALLED by others

SIDE VIEW



**INFORMATION ONLY**

NOTE: Hearth Tiles CUT AND INSTALLED by others



MID-ATLANTIC MASONRY HEAT  
 1229 Harris Street Suite 1  
 Charlottesville, VA 22903  
 (434)979-9709 Fax 434-979-6416

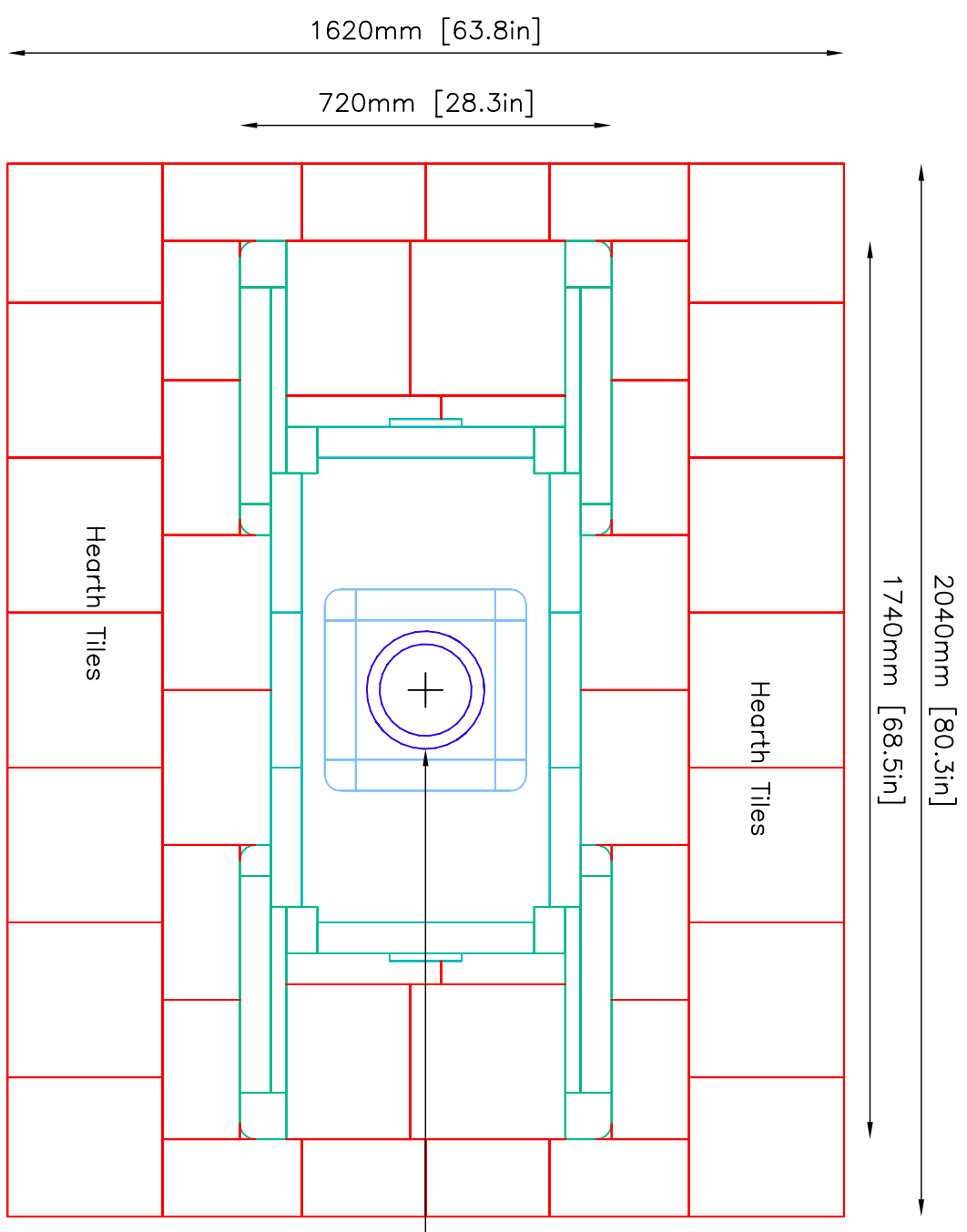
PROJECT MacMillian  
 MODEL TU2200-Custom

CONTRACT 5642  
 DRAWN BY D.P.BYRAM

VIEW SIDE  
 DATE 4/13/04

PAGE 3

PLAN VIEW



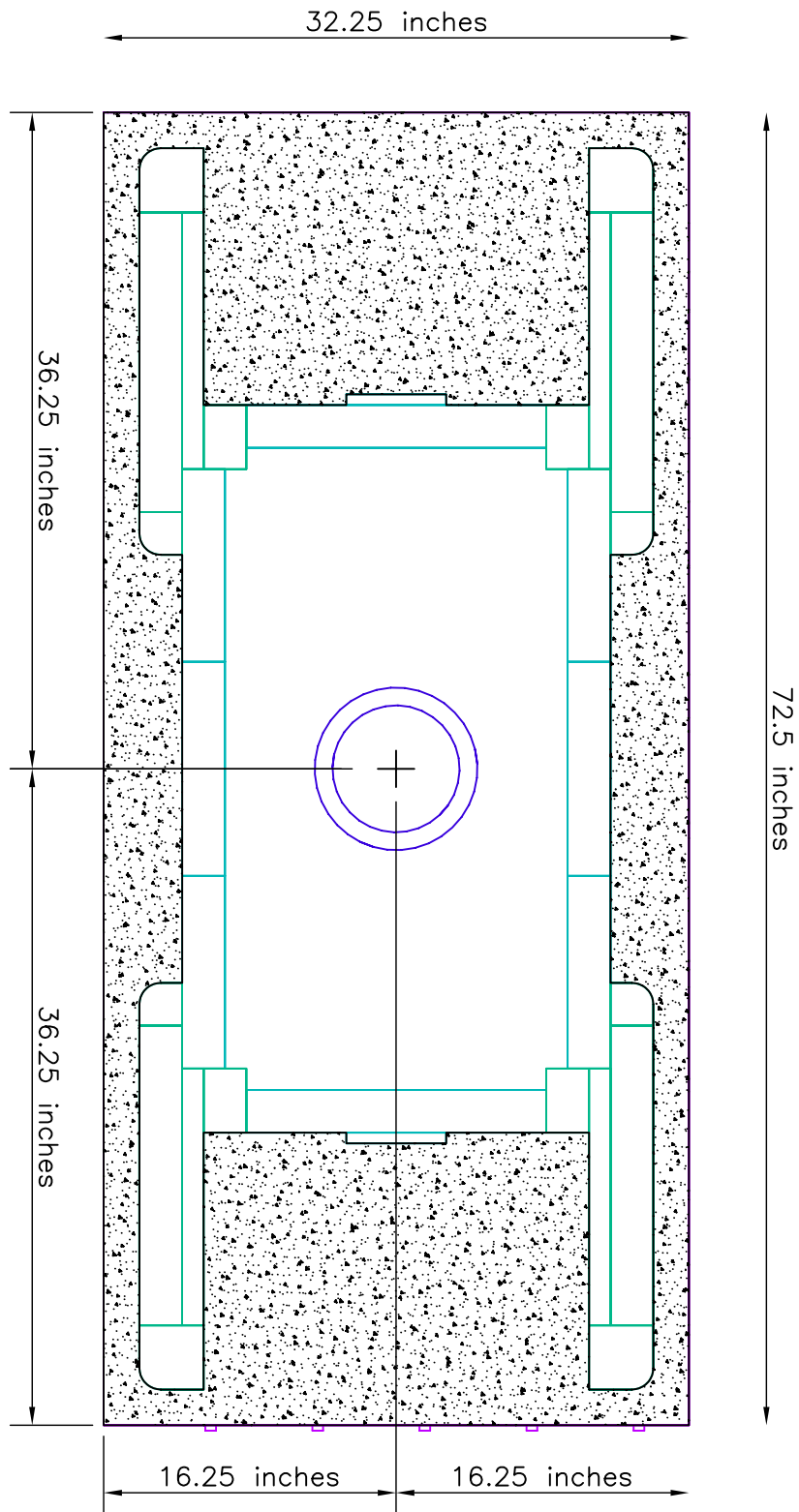
NOTE: Hearth Tiles CUT AND INSTALLED by others

7" I.D./9" O.D. Double Wall  
Stainless Steel Flue Pipe  
by others  
SEE PAGE 5 FOR  
FLUE LOCATION

**INFORMATION ONLY**

# FOUNDATION SLAB

Minimum 4" Thick Poured Concrete With Rebar 6"O.C.  
 Minimum Dimensions—2" from Base of Unit



**NOTE:**  
 TOP OF FOUNDATION SLAB TO BE LEVEL AND FLUSH WITH SUB-FLOOR  
 Tolerances: +/- 1/8" No additional cost to level slab  
 +/- 1/4" \$150.00—\$200.00 additional cost to level slab  
 +/- 1/2" \$500.00 additional cost to level slab

**UNIT WEIGHT: 5,000lbs.**  
 Owner/Contractor is responsible for engineering Foundation Slab to support weight of fireplace.

**INFORMATION ONLY**



MID-ATLANTIC MASONRY HEAT  
 1229 Harris Street Suite 1  
 Charlottesville, VA 22903  
 (434)979-9709 Fax 434-979-6416

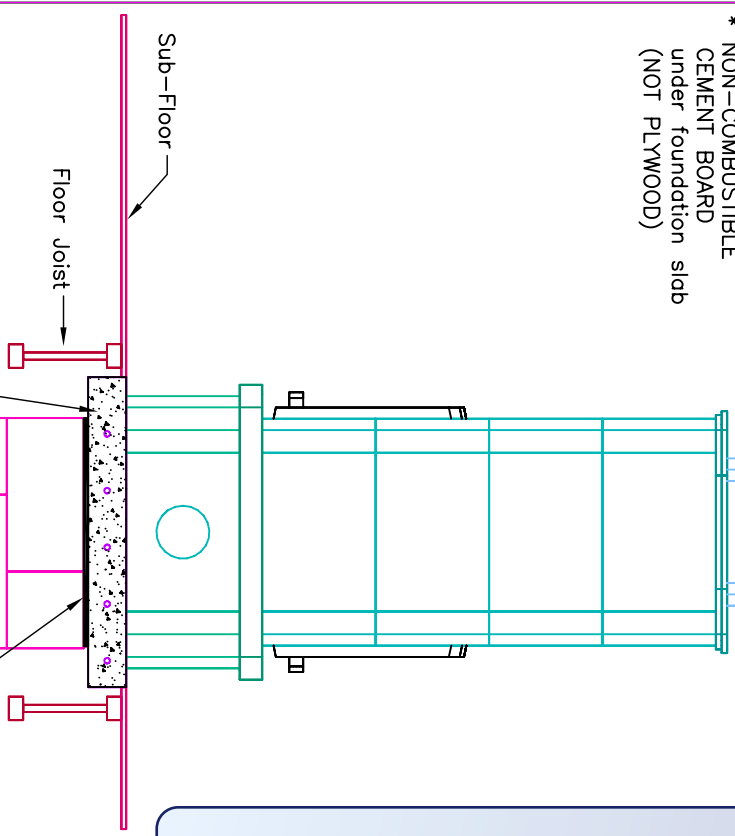
PROJECT MacMillian  
 MODEL TU2200—Custom

CONTRACT 5642  
 DRAWN BY D.P.BYRAM

VIEW SUPPORT  
 DATE 4/13/04

PAGE 5

**FOUNDATION SLAB:**  
 \* MINIMUM 4" THICK  
 WITH REBAR 6" O.C.  
 \* NON-COMBUSTIBLE  
 CEMENT BOARD  
 under foundation slab  
 (NOT PLYWOOD)



**INFORMATION ONLY**

**FOUNDATION SLAB:**  
 MINIMUM 4" THICK  
 POURED CONCRETE  
 WITH REBAR 6" O.C.

**NON-COMBUSTIBLE  
 CEMENT BOARD  
 UNDER FOUNDATION  
 SLAB (NOT PLYWOOD)**

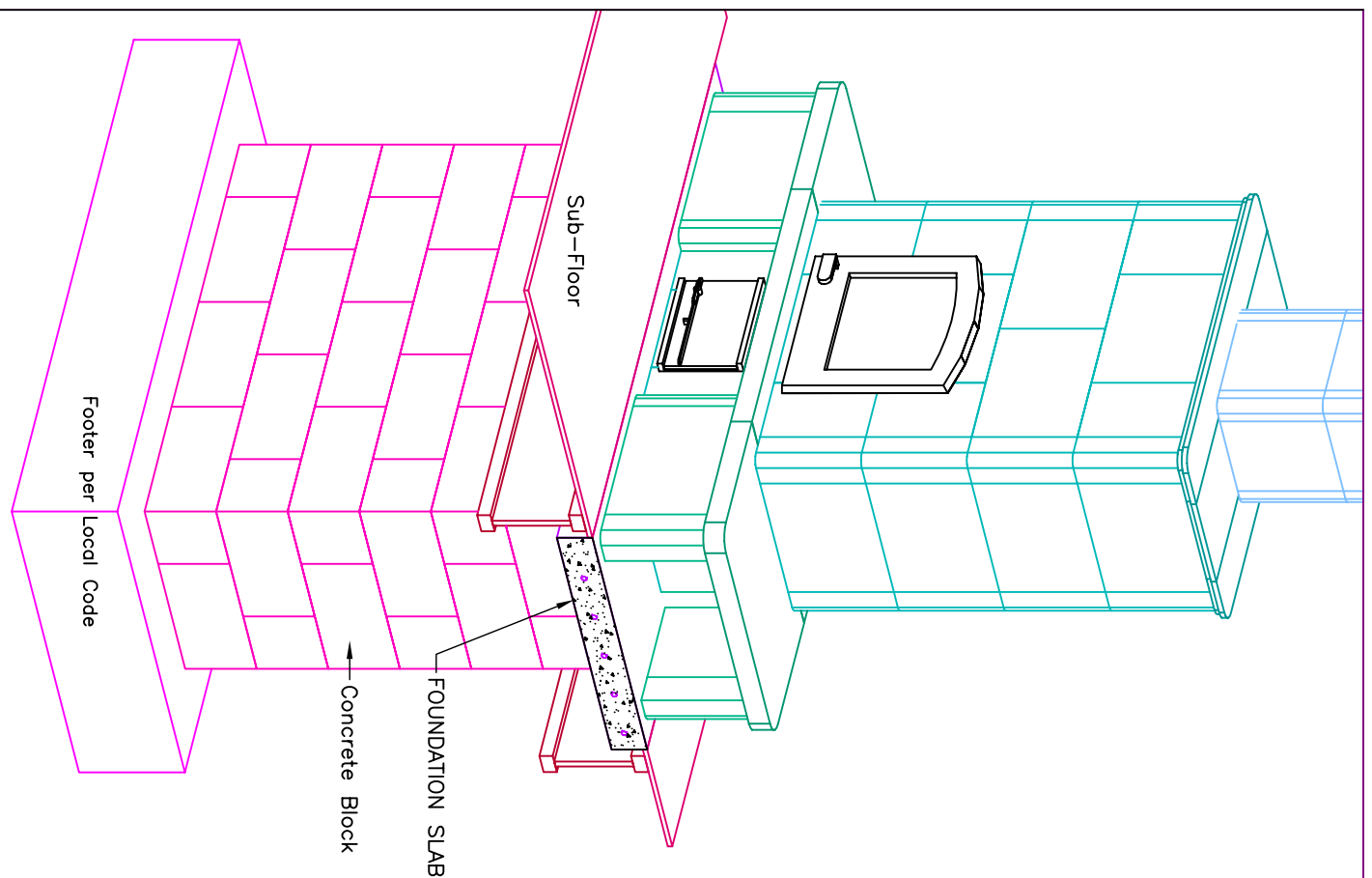
Concrete Block

**NOTE:**  
 TOP OF FOUNDATION SLAB TO BE LEVEL  
 AND FLUSH WITH SUB-FLOOR  
 Tolerances:  
 +/- 1/8" No additional cost  
 to level slab  
 +/- 1/4" \$150.00-\$200.00 additional  
 cost to level slab  
 +/- 1/2" \$500.00 additional cost  
 to level slab

Footer per Local Code

**UNIT WEIGHT: 5,000lbs.**

Owner/Contractor is responsible for engineering Foundation Slab to support weight of fireplace.



FOUNDATION SLAB

Concrete Block

Footer per Local Code



MID-ATLANTIC MASONRY HEAT  
 McIntire Business Park  
 Charlottesville, VA 22903  
 (434)979-9709 Fax 434-979-6416

PROJECT MacMillian  
 MODEL TU2200-Custom

CONTRACT 5642  
 DRAWN BY D.P.BYRAM

VIEW Foundation Slab  
 DATE 4/13/04