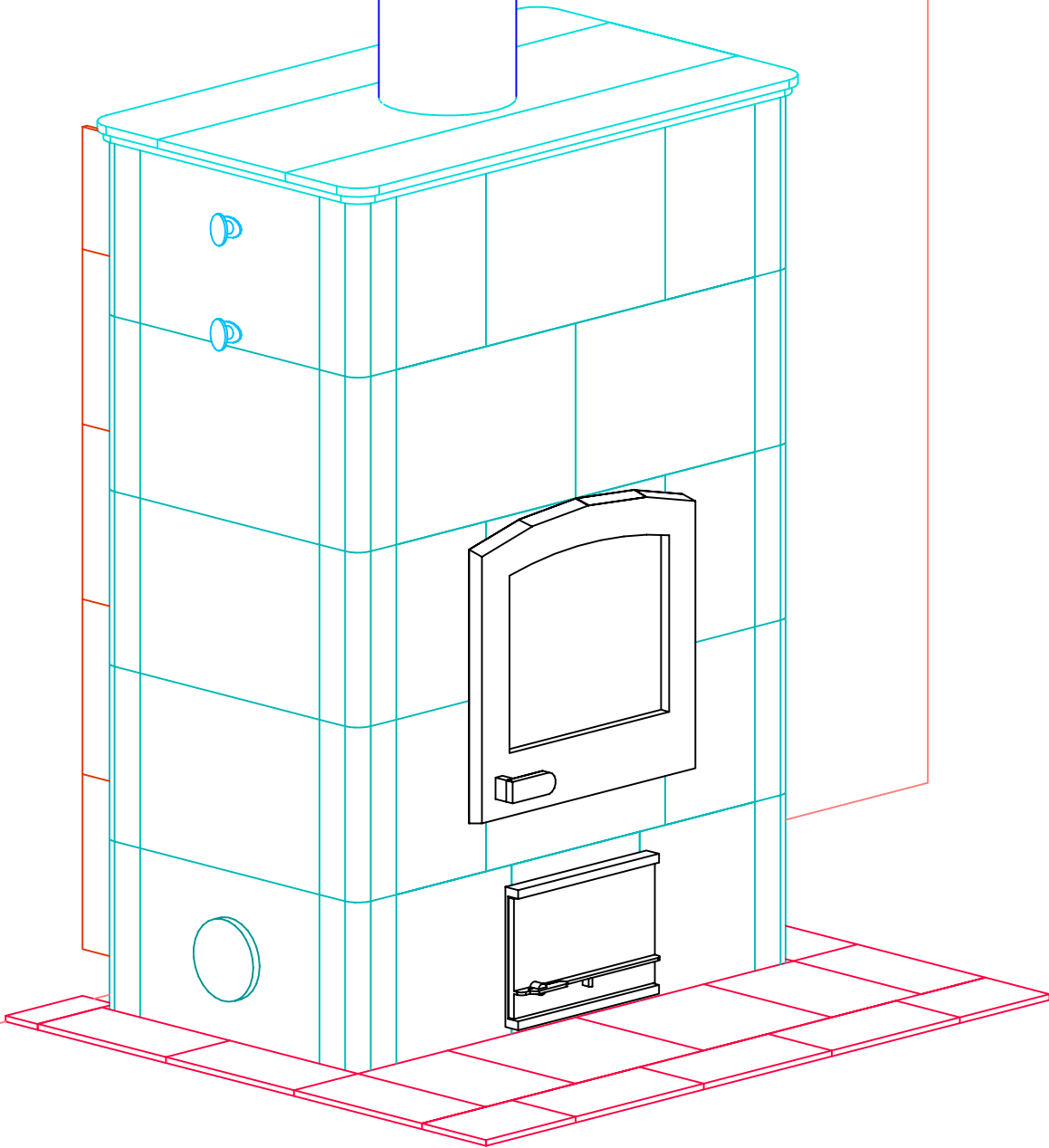


# INFORMATION ONLY



NOTE: Hearth Tiles CUT AND INSTALLED by others



MID-ATLANTIC MASONRY HEAT  
1229 Harris Street Suite 1  
Charlottesville, VA 22903  
(434)979-9709 Fax 434-979-6416

PROJECT PARSONS  
MODEL TU2200-T

CONTRACT  
DRAWN BY D.P.BYRAM

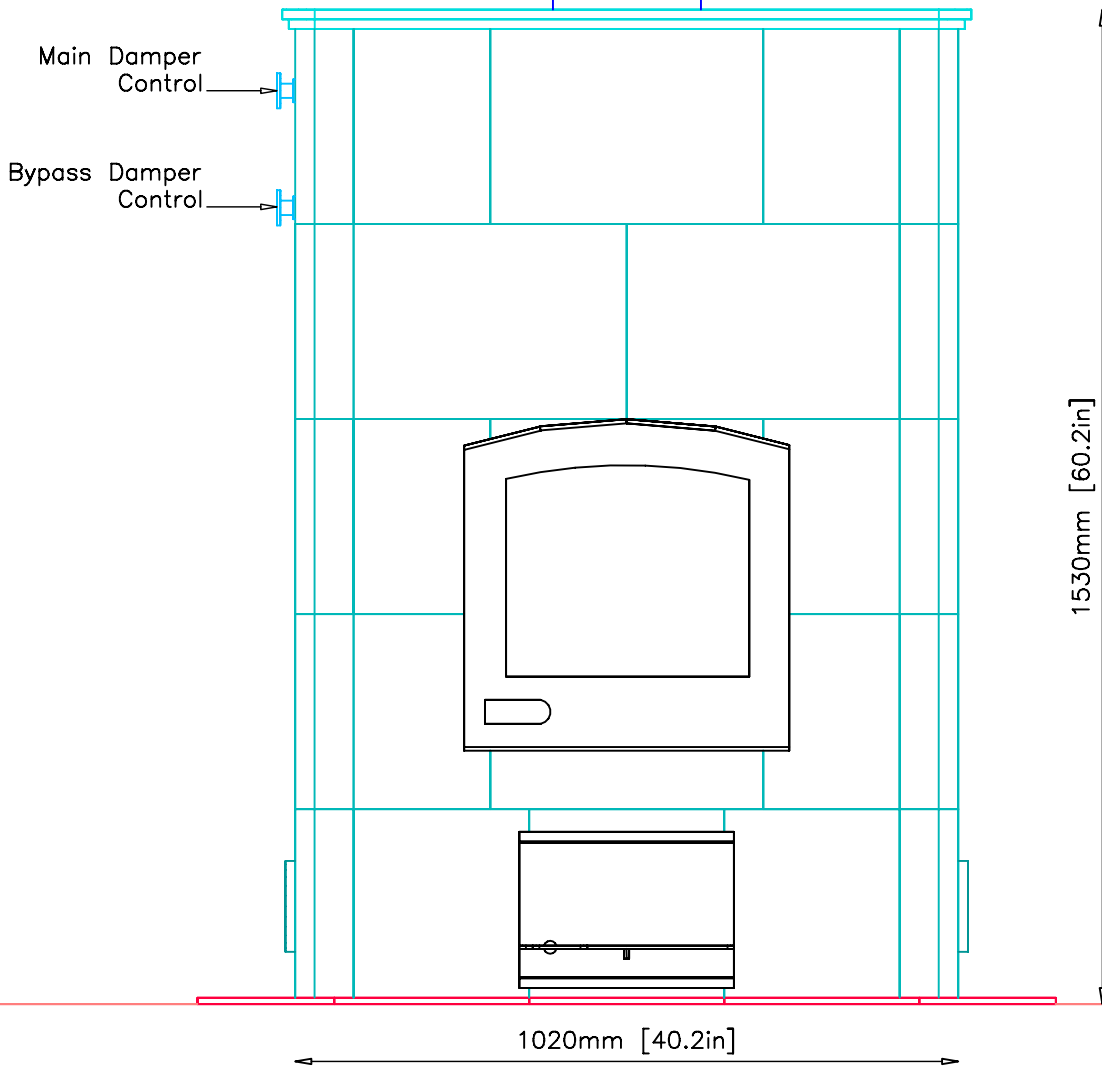
VIEW PERSPECTIVE  
DATE 11/19/02

PAGE 1

# INFORMATION ONLY

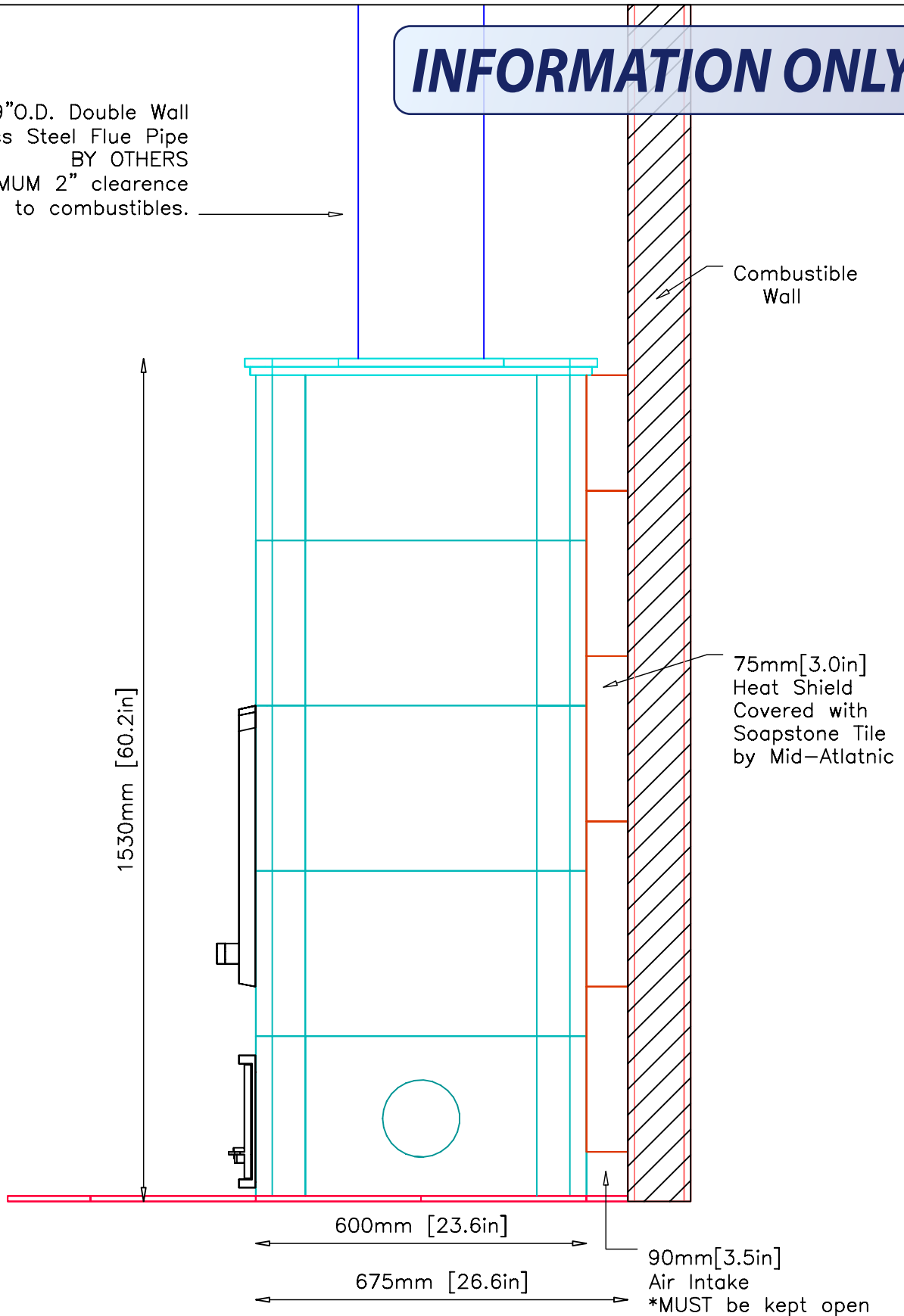
7" I.D./9" O.D. Double Wall  
Stainless Steel Flue Pipe  
BY OTHERS

\*MINIMUM 2" clearance to  
combustible material

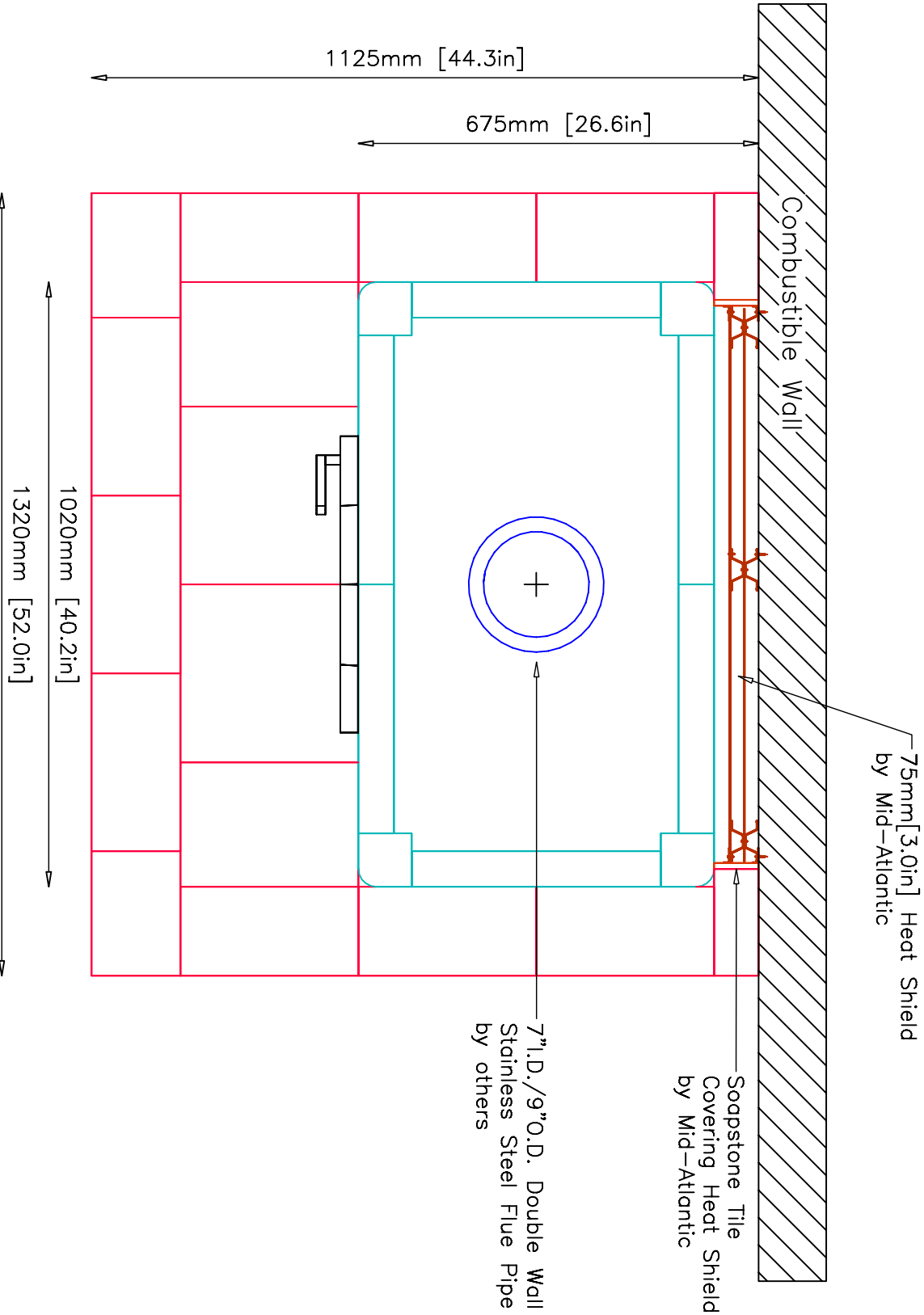


# INFORMATION ONLY

7" I.D./9" O.D. Double Wall  
Stainless Steel Flue Pipe  
BY OTHERS  
\*MINIMUM 2" clearance  
to combustibles.



# INFORMATION ONLY

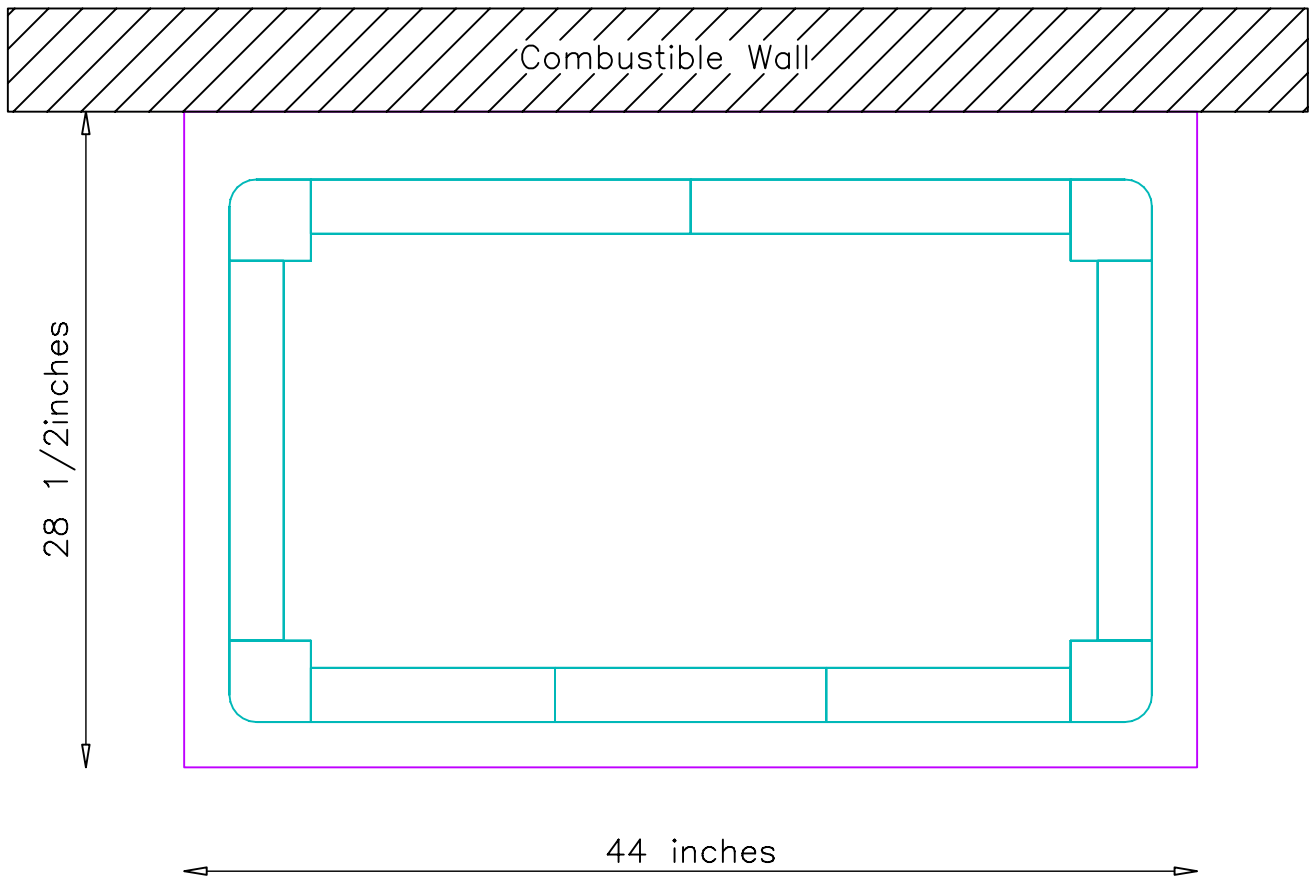


NOTE: Hearth Tiles CUT AND INSTALLED by others

# CAPPING SLAB

Minimum Dimensions--2" from Base of Unit

**INFORMATION ONLY**



**NOTE:**

TOP OF CAPPING SLAB TO BE LEVEL AND FLUSH WITH SUB-FLOOR

- Tolerances: +/- 1/8" No additional cost to adjust slab
- +/- 1/4" \$150.00-\$200.00 additional cost to adjust slab
- +/- 1/2" \$500.00 additional cost to adjust slab

UNIT WEIGHT: Approx. 5600lbs.

Contractor is responsible for engineering capping slab to support weight of fireplace.



MID-ATLANTIC MASONRY HEAT  
1229 Harris Street Suite 1  
Charlottesville, VA 22903  
(434)979-9709 Fax 434-979-6416

PROJECT PARSONS  
MODEL TU2200-T

CONTRACT  
DRAWN BY D.P.BYRAM

VIEW SUPPORT  
DATE 11/19/02

PAGE

5