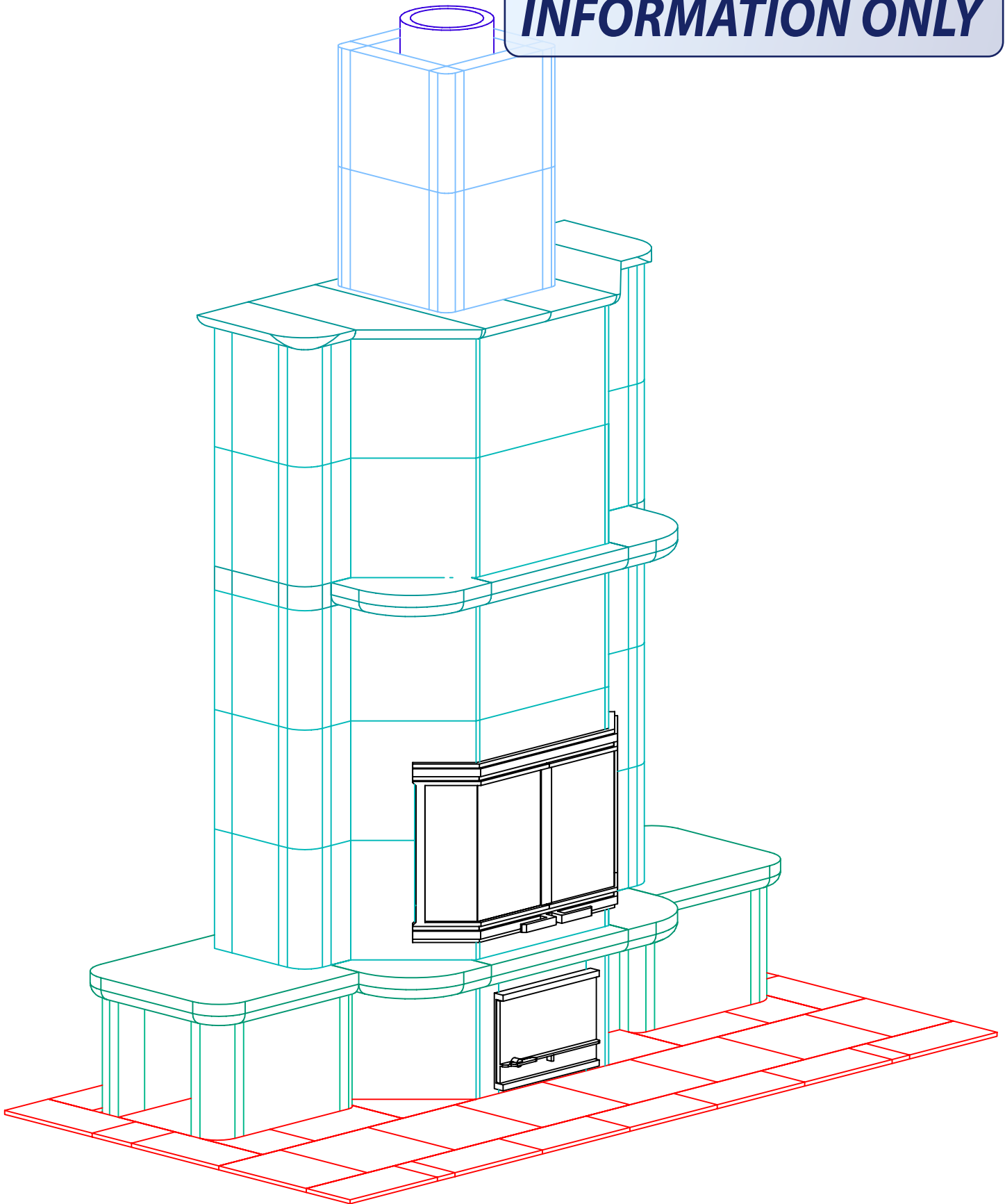


INFORMATION ONLY



NOTE: Hearth Tiles CUT AND INSTALLED by others



MID-ATLANTIC MASONRY HEAT
1229 Harris Street Suite 1
Charlottesville, VA 22903
(434)979-9709 Fax 434-979-6416

PROJECT
KOWALEWSKI
MODEL
TU2277

CONTRACT
5621
DRAWN BY
D.P.BYRAM

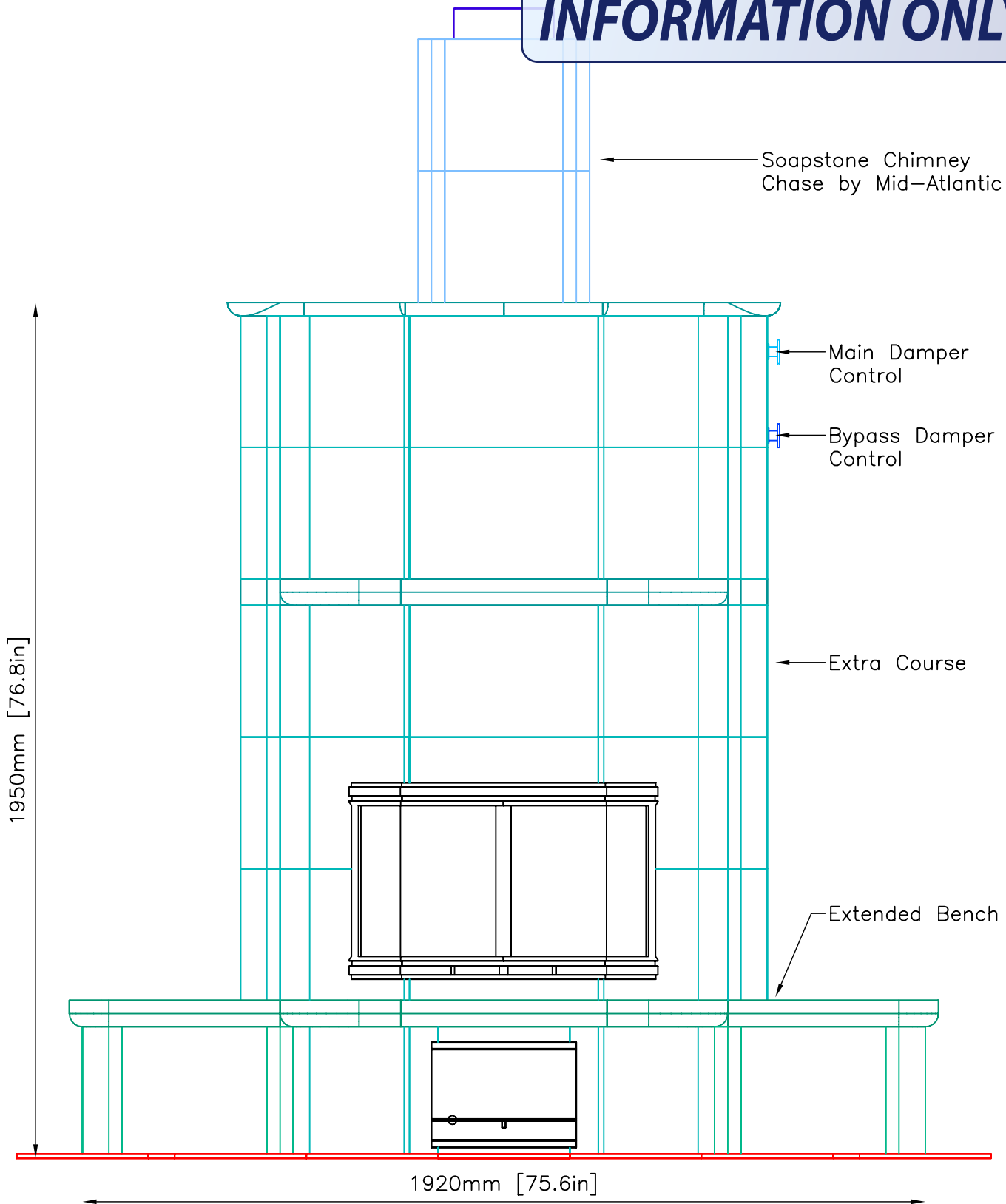
VIEW
PERSPECTIVE
DATE
2/18/04

PAGE

1

FRONT VIEW

INFORMATION ONLY



NOTE: Hearth Tiles CUT AND INSTALLED by others



MID-ATLANTIC MASONRY HEAT
1229 Harris Street Suite 1
Charlottesville, VA 22903
(434)979-9709 Fax 434-979-6416

PROJECT KOWALEWSKI
MODEL TU2277

CONTRACT 5621
DRAWN BY D.P.BYRAM

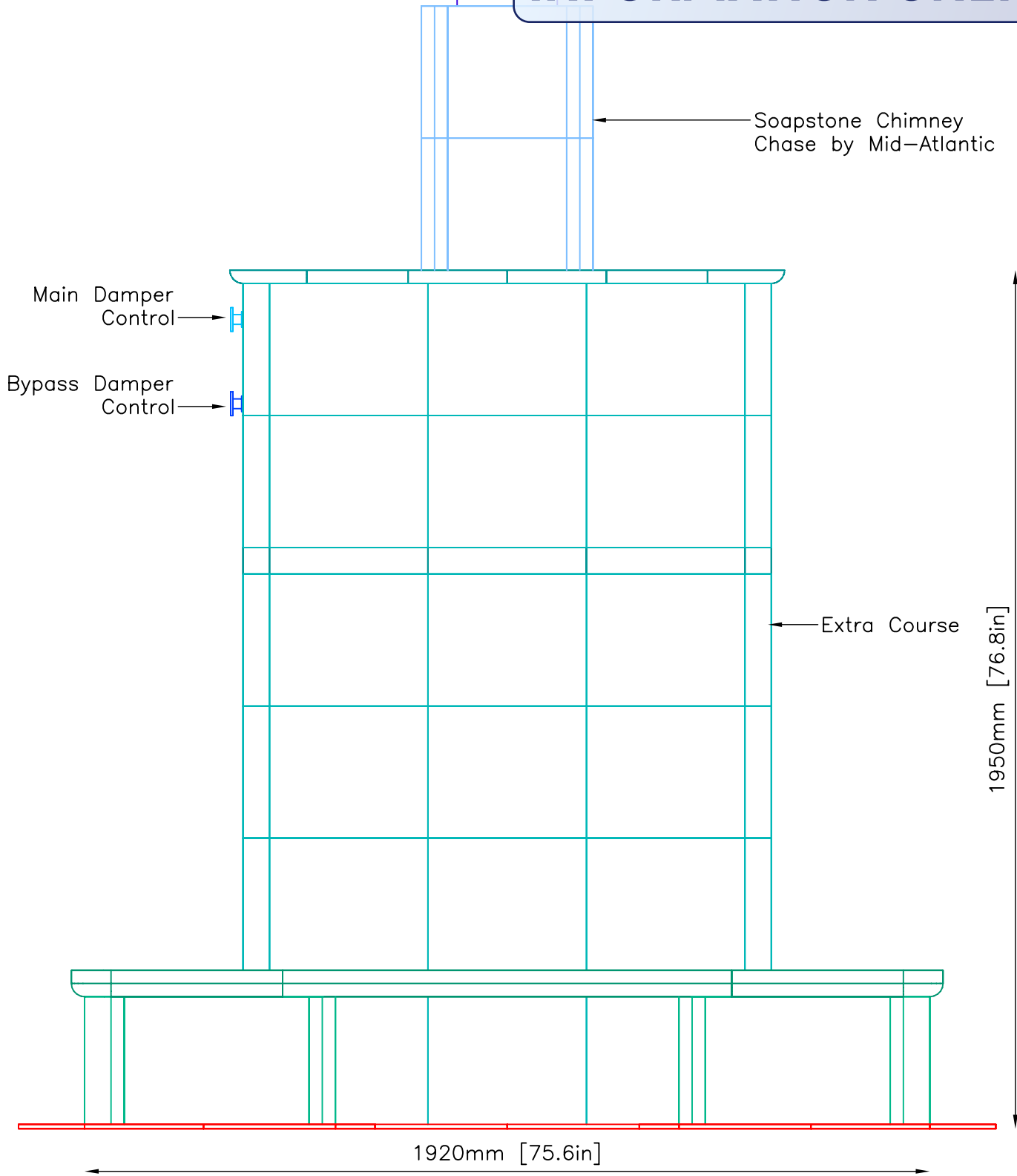
VIEW FRONT
DATE 2/18/04

PAGE

2

BACK VIEW

INFORMATION ONLY



NOTE: Hearth Tiles CUT AND INSTALLED by others



MID-ATLANTIC MASONRY HEAT
1229 Harris Street Suite 1
Charlottesville, VA 22903
(434)979-9709 Fax 434-979-6416

PROJECT KOWALEWSKI
MODEL TU2277

CONTRACT 5621
DRAWN BY D.P.BYRAM

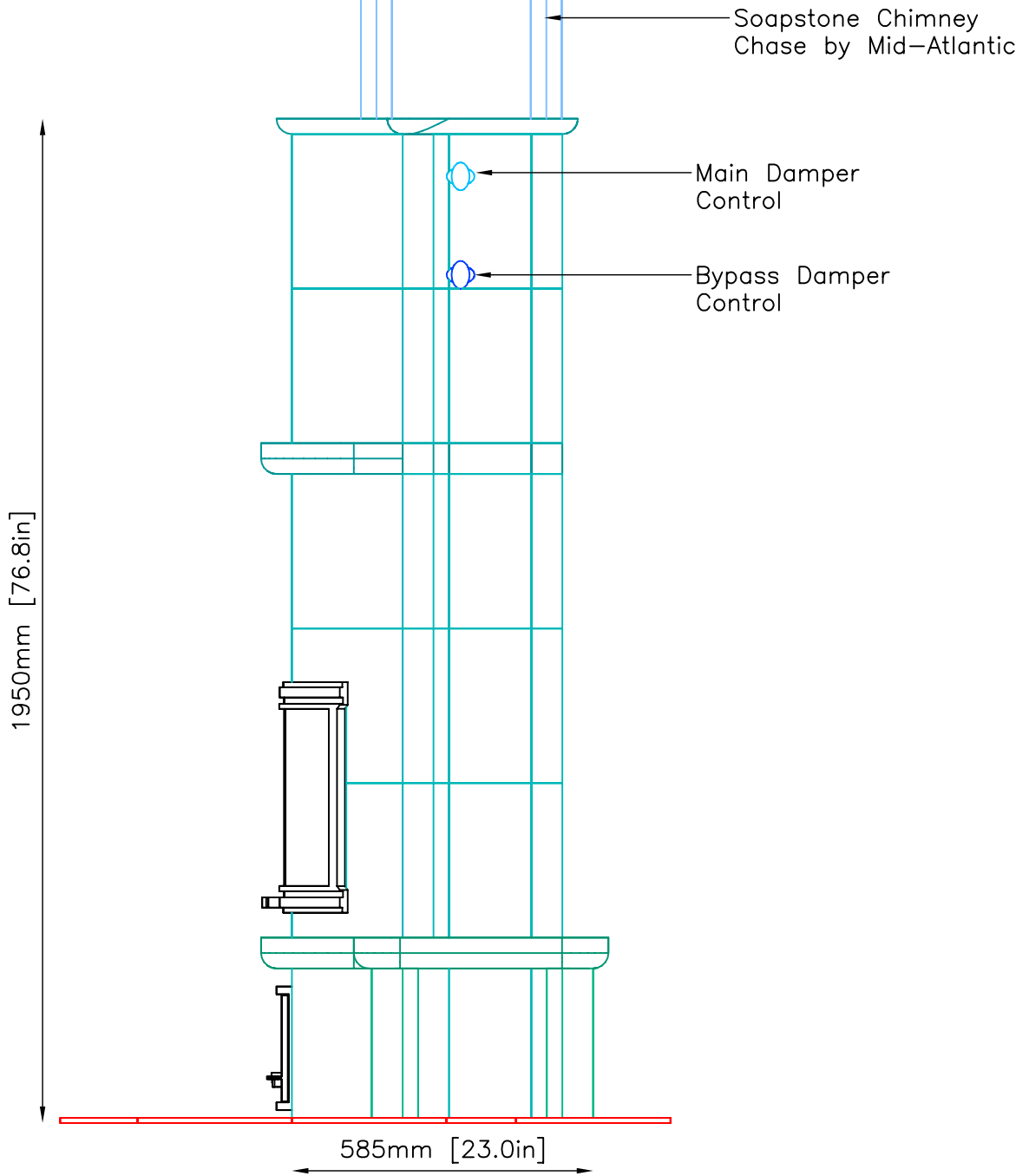
VIEW BACK
DATE 2/18/04

PAGE

3

SIDE VIEW

INFORMATION ONLY



NOTE: Hearth Tiles CUT AND INSTALLED by others



MID-ATLANTIC MASONRY HEAT
1229 Harris Street Suite 1
Charlottesville, VA 22903
(434)979-9709 Fax 434-979-6416

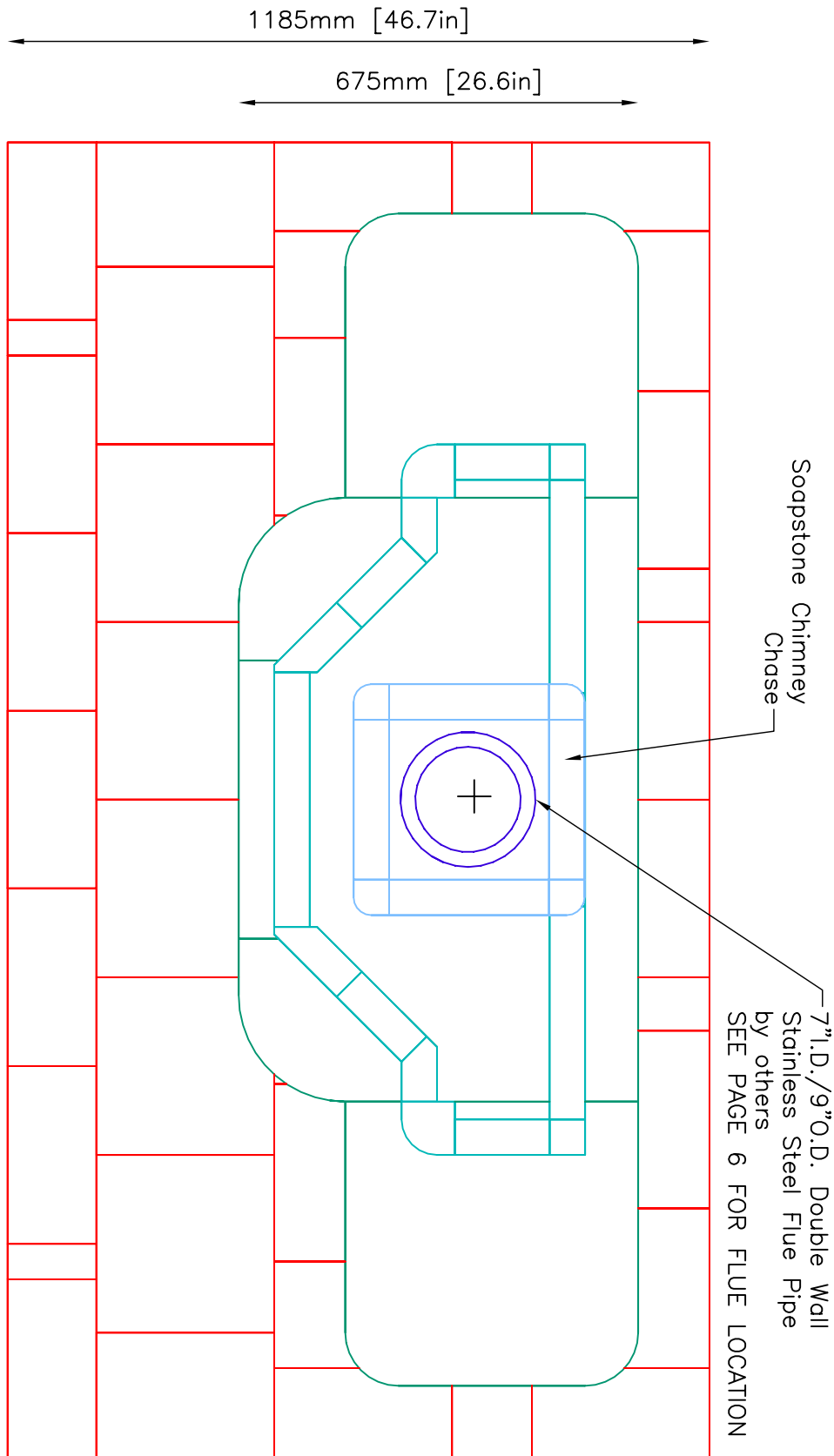
PROJECT KOWALEWSKI
MODEL TU2277

CONTRACT 5621
DRAWN BY D.P.BYRAM

VIEW SIDE
DATE 2/18/04

PAGE

4



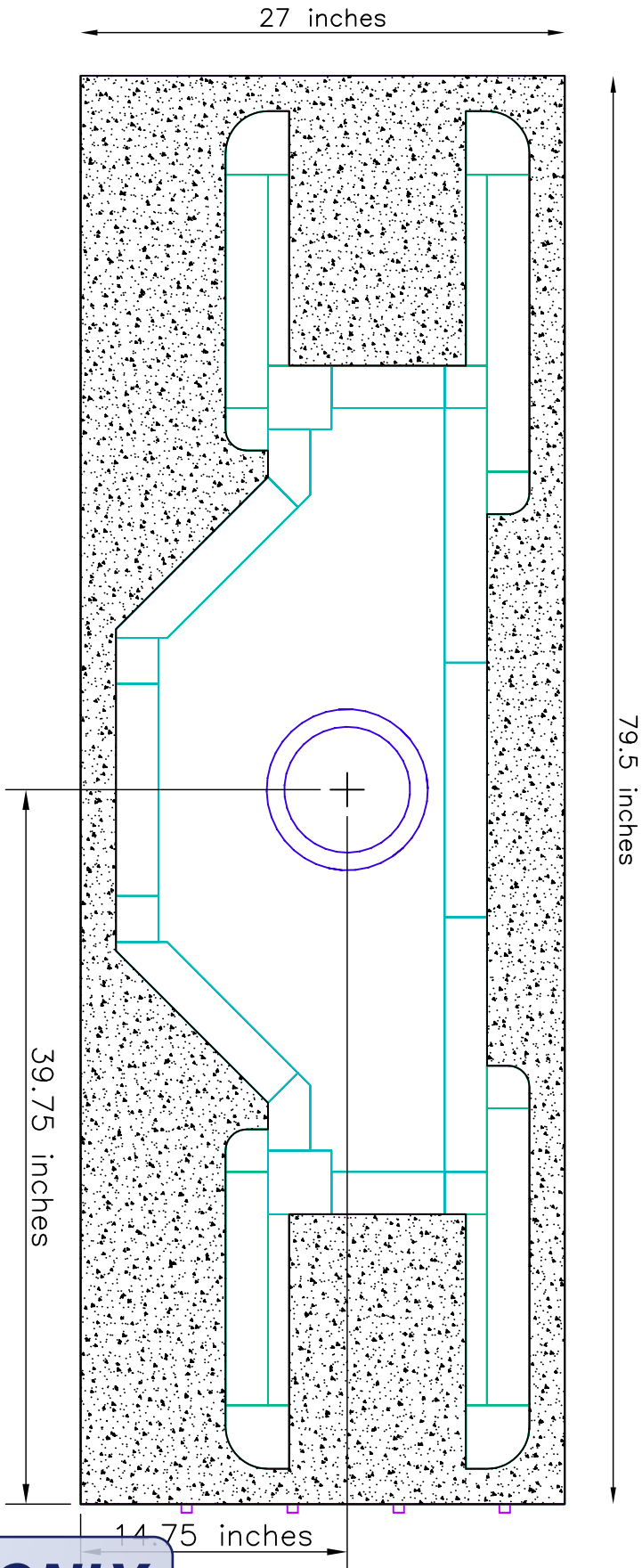
NOTE: Hearth Tiles CUT AND INSTALLED by others

INFORMATION ONLY

	MID-ATLANTIC MASONRY HEAT 1229 Harris Street Suite 1 Charlottesville, VA 22903 (434)979-9709 Fax 434-979-6416	PROJECT	KOWALEWSKI	CONTRACT	5621	VIEW	PLAN	PAGE 5
		MODEL	TU2277	DRAWN BY	D.P.BYRAM	DATE	2/18/04	

FOUNDATION SLAB

Minimum 4" Thick Poured Concrete With Rebar 6" O.C.
 Minimum Dimensions—2" from Base of Unit



FLUE LOCATION:
 1 43/4" x 39 3/4" From Lower Right Corner of Foundation Slab
 to CENTER of Flue Pipe.

NOTE:
 TOP OF FOUNDATION SLAB TO BE LEVEL AND FLUSH WITH SUB-FLOOR

Tolerances: +/- 1/8" No additional cost to level slab
 +/- 1/4" \$150.00—\$200.00 additional cost to level slab
 +/- 1/2" \$500.00 additional cost to level slab

UNIT WEIGHT: 6000lbs.

Owner/Contractor is responsible for engineering Foundation Slab to support weight of fireplace.

INFORMATION ONLY



MID-ATLANTIC MASONRY HEAT
 1229 Harris Street Suite 1
 Charlottesville, VA 22903
 (434)979-9709 Fax 434-979-6416

PROJECT KOWALEWSKI
 MODEL TU2277

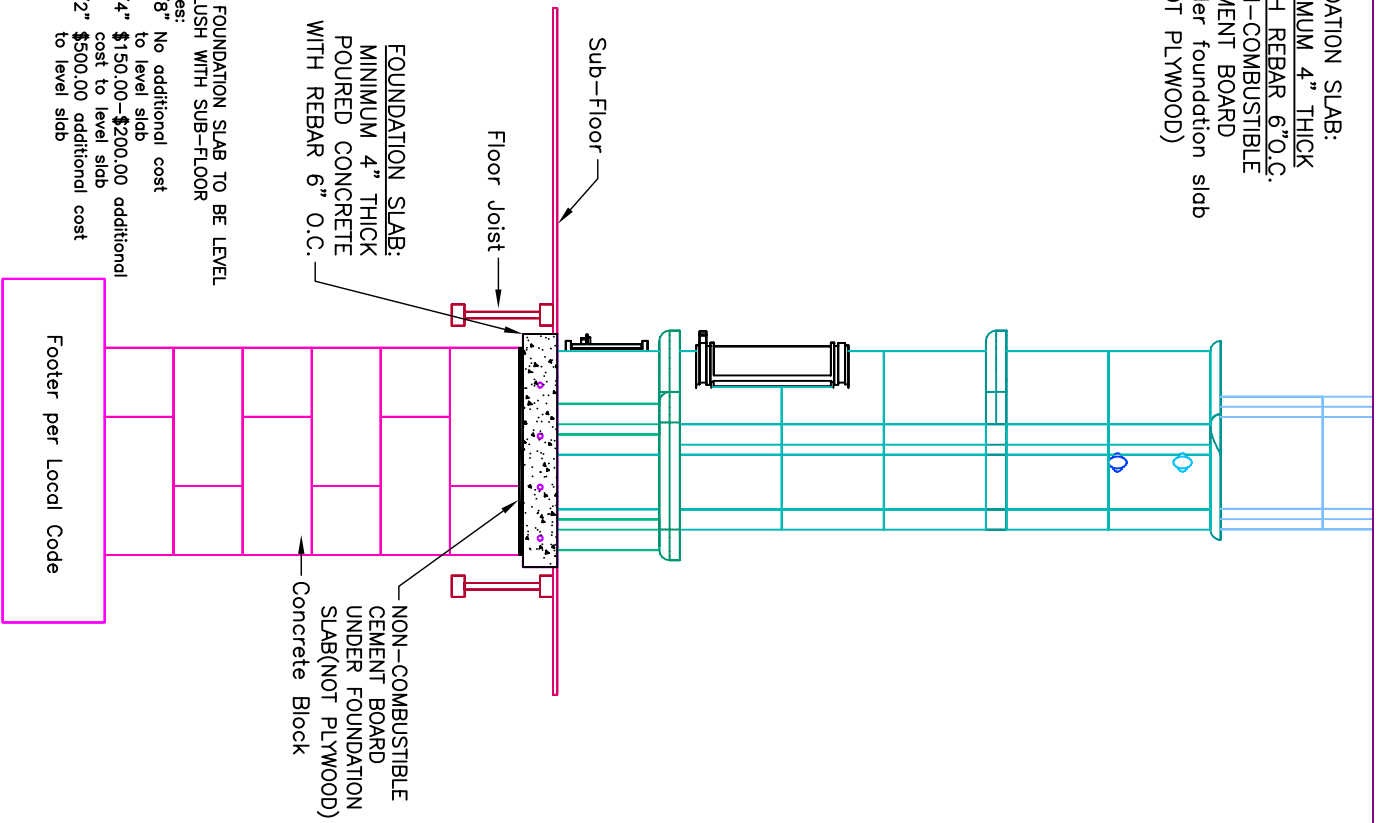
CONTRACT 5621
 DRAWN BY D.P.BYRAM

VIEW SUPPORT
 DATE 2/18/04

PAGE

9

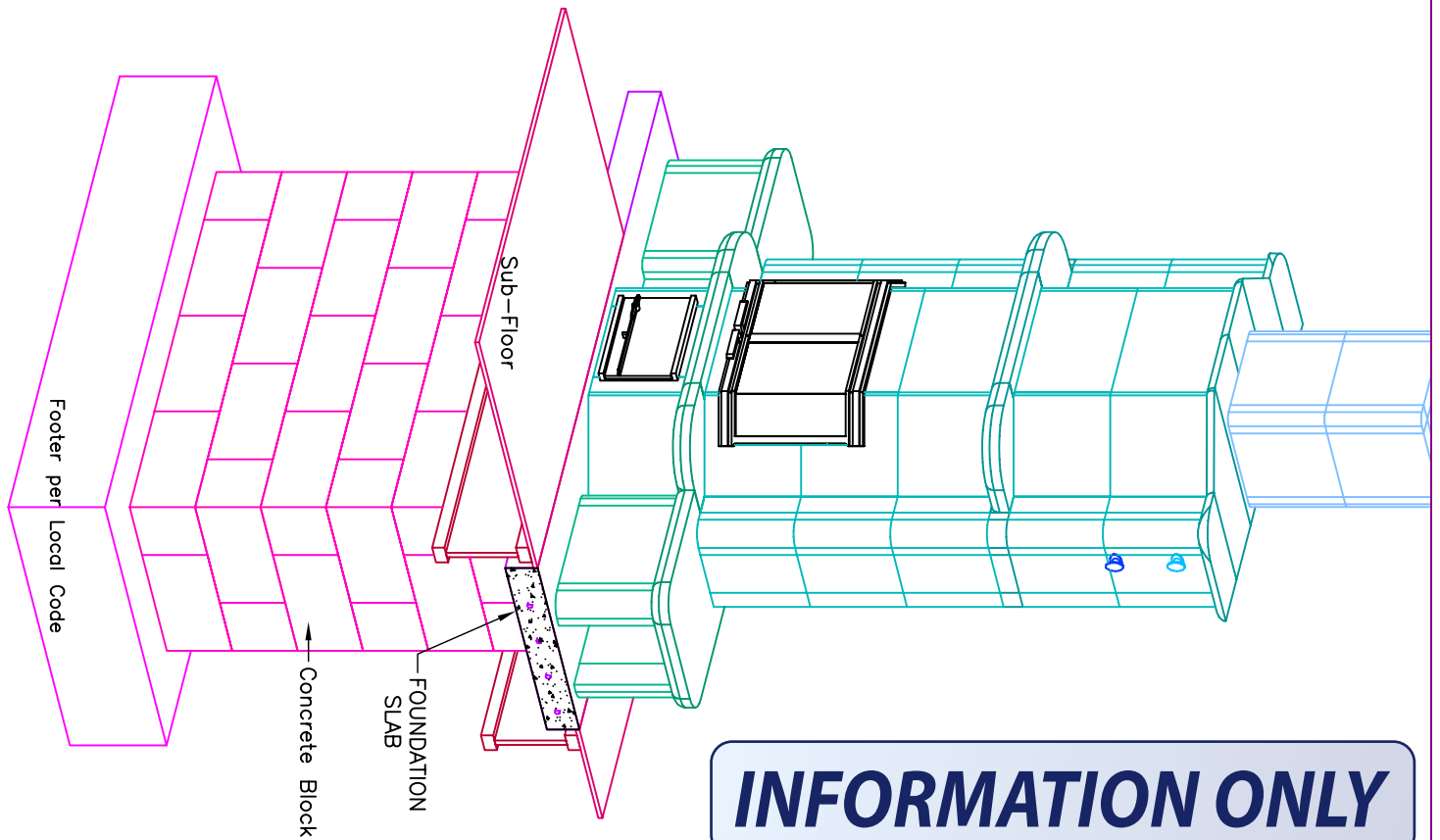
FOUNDATION SLAB:
 * MINIMUM 4" THICK
 WITH REBAR 6" O.C.
 * NON-COMBUSTIBLE
 CEMENT BOARD
 under foundation slab
 (NOT PLYWOOD)



NOTE:
 TOP OF FOUNDATION SLAB TO BE LEVEL
 AND FLUSH WITH SUB-FLOOR
 Tolerances:
 +/- 1/8" No additional cost
 to level slab
 +/- 1/4" \$150.00-\$200.00 additional
 cost to level slab
 +/- 1/2" \$500.00 additional cost
 to level slab

Footer per Local Code

UNIT WEIGHT: 6000lbs.
 Owner/Contractor is responsible for engineering Foundation Slab to support weight of fireplace.



INFORMATION ONLY



MID-ATLANTIC MASONRY HEAT
 McIntire Business Park
 Charlottesville, VA 22903
 (434)979-9709 Fax 434-979-6416

PROJECT KOWALEWSKI	CONTRACT 5621	VIEW Foundation Slab	PAGE 7
MODEL TU2277	DRAWN BY D.P.BYRAM	DATE 2/18/04	